

ANNUAL REPORT 2009-2010



**National Institute for Empowerment
of Persons with Multiple Disabilities**
(Ministry of Social Justice & Empowerment, Govt. of India)



CONTENTS

<i>Chapter No.</i>		<i>Page No</i>
1	Introduction	01
2	Organizational Structure	05
3	Human Resources Development 3.1. Long Term Training Programs 3.2. Short Term Training Programs 3.3. Faculties/Officials Participation in Workshops/Conferences & Seminars	06
4	Services and Programs	12
5	Scheme of Assistance to Disabled persons for Purchase / fitting of Aids / Appliances (ADIP)	33
6	Research & Development	35
7	Important Events	38
8	Other Activities	44
9	Administration	46
10	Audit Report & Annual Accounts	53
11	Appendices i. List of Members of General Council – A ii. List of Members of Executive Council – B iii. List of Members of Academic Committee – C	91 93 94
12	Annexure i. Course Curricula, Objectives of the Course, List of successful candidates passed out with their placement status and Details of various Scholarships received by the trainees during the academic year 2009-10. ii. Details of Short-term training programs iii. Faculty Members/Officials Participation in Workshops/Conferences & seminars	95 106 111



Chapter 1

Introduction - Overview

The Ministry of Social Justice & Empowerment, Govt. of India is working for the Rights and Empowerment of the persons with Disabilities, through its National Institutes, Non-Governmental Organizations (NGOs) and various other organizations, situated all over the country that functions, by evolving service delivery models, conducting awareness, sensitization, Human Resource Development (HRD) programs, Research & Development, providing assistive devices and livelihood for Persons with Disabilities. Some Institutes that were started earlier, were working for the Persons with Disabilities of different individual categories (single disabilities). However from various reports and surveys there are Persons with Multiple Disabilities too. Focus was given to Multiple Disabilities and there arose a need felt issue to start a National Institute exclusively for Empowerment of Persons with Multiple Disabilities. To fulfill the above, **National Institute for Empowerment of Persons with Multiple Disabilities (NIEPMD)** came into existence in the year 2005. This Institute is situated in a picturesque ambience on East Coast Road, Muttukadu, Chennai, 35 kilometers away from the Chennai Central Railway station. At present the Institute is functioning in a renovated building. Construction of a state of art building for this institute is in progress.

The National Institute for Empowerment of Persons with Multiple Disabilities (**NIEPMD**) is marching ahead with various innovative strategies for clients as well as families. Persons with Disabilities and their families are supported to cope up with stress, such that their quality of life is enhanced and they become contributory members to the society. On entering the 5th year of establishment, there is an increased flow of clients. Even Non Resident Indians do approach the multidisciplinary team of experts in the institute for obtaining programs of rehabilitation for their wards.

NIEPMD has been allocated the states of Tamil Nadu, Kerala, Pondicherry, Andaman & Nicobar Islands and Lakshadweep by Ministry of Social Justice & Empowerment, Govt. of India vide Letter No: 4-2(39)/09-DD-I dated 29.09.2009 for regular monitoring and inspection of organizations receiving grants to implement various welfare schemes and programs.

The year 2009-10 was significant due to the multitude of events that took place at NIEPMD. The meeting of the Central Monitoring Committee for construction of the new buildings of NIEPMD, constituted by the Ministry, the State level workshop for Medical Boards on disability certification and evaluation, Regional workshop on Empowerment and Management of Persons with Multiple Disabilities are a few to be quoted.

The programs and services were strengthened by introduction of newer strategies in the intervention of the persons with multiple disabilities. Economic independence among the families of persons with multiple disabilities was one of our major focuses, especially for mothers of clients with disabilities. The professionals of NIEPMD could make more impact at the place of training out side Chennai, following which there were many referrals to the centre for various interventions. The Special Clinical services from Neurologist, Ophthalmologist, Psychiatrist and Dentist were conducted on specific days. Identification of Persons with Multiple Disabilities were carried out in different parts of the country and distribution of aids and appliances to persons with Disabilities took place in those areas.

Persons with syndromes, where Neuro- Metabolic Disorders have been a cause, have registered at NIEPMD and this led to very informative discussions in the case conferences with allotment of the clients to efficient case managers. The rare entities in etiology of multiple disabilities registered are further investigated to prove the cause and also to work more on prevention.

National Institute for Empowerment of Persons with Multiple Disabilities

The long term training program intake capacity has been increased from 14 to 25 after the Rehabilitation Council of India (RCI) inspection for the three diploma courses - Diploma in Special Education (Cerebral Palsy, Deafblind and Autism Spectrum Disorder). The B.Ed. Special Education (Multiple Disabilities) will be launched in the ensuing academic year (2010 -11). The short term training programs have been conducted both at the centre as well as other places including other states to different target groups.

General awareness about NIEPMD has been on the rise. The **Doordarshan** has telecasted the different facets of rehabilitation as a serial.

According to National Sample Survey Organization (NSSO) 2002 survey, total number of disabled population in India is 1.85 crores, (i.e, 1.8%), amongst them 10.63% are Persons with Multiple Disabilities. It can be seen from the map given below that the state of Uttar Pradesh has the highest number of Persons with Multiple Disabilities (3.7 Lakhs) and among the Union Territories, Delhi has the highest number of Persons with Multiple Disabilities (0.25 Lakhs).



Estimated State-wise population of Persons with Multiple Disabilities (in lakhs) in India



Table1: State wise Population of Single Disability* and Multiple Disabilities**

Sl. No.	State/UT	Visual Disability	Speech Disability	Hearing Disability	Loco-motor Disability	Mental Disability	Total	Approx. No. of PWMDs#
1	Uttar Pradesh	1852071	255951	128303	930580	286464	3453369	367093
2	Bihar	1005605	130471	73970	512246	165319	1887611	200653
3	West Bengal	862073	170022	131579	412658	270842	1847174	196355
4	Tamil Nadu	964063	124479	72636	353798	127521	1642497	174597
5	Maharashtra	580930	113043	92390	56945	213274	1569582	166847
6	Rajasthan	753962	73147	75235	400577	109058	1411979	150093
7	Madhya Pradesh	63614	75825	85354	495878	115257	1408528	149726
8	Andhra Pradesh	581587	138974	73373	415848	155199	1364981	145097
9	Gujarat	494624	66534	70321	310765	103221	1045465	111133
10	Orissa	514104	68673	84115	250851	103592	1021335	108568
11	Karnataka	440875	90717	49861	266559	92631	940643	99990
12	Kerala	334622	67066	79713	237707	141686	860794	91502
13	Assam	282056	56974	51825	91970	47475	530300	56371
14	Haryana	201358	24920	27682	151485	49595	455040	48371
15	Jharkhand	186216	39683	28233	138323	55922	448377	47662
16	Punjab	170853	22756	17348	149758	63808	424523	45127
17	Chhattisgarh	160131	30438	34093	151611	43614	419887	44634
18	Jammu & Kashmir	208713	16956	14157	37965	24879	302670	32174
19	Uttarakhand	85668	16749	15990	56474	19888	194769	20703
20	Himachal Pradesh	64122	12762	15239	46512	17315	155950	16577
21	Tripura	27505	5105	5699	13970	6661	58940	6265
22	Arunachal Pradesh	23079	2429	3072	3474	1261	33315	3541
23	Meghalaya	13381	3431	3668	5127	3196	28803	3062
24	Manipur	11713	2769	2994	6177	4723	28376	3016
25	Nagaland	9968	4398	5245	4258	2630	26499	2817
26	Sikkim	10790	3174	3432	2172	799	20367	2165
27	Mizoram	6257	2006	2421	2476	2851	16011	1702
28	Goa	4393	1868	1000	4910	3578	15749	1674
Union Territories								
29	Delhi	10712	15505	8741	64885	26043	235886	25075
30	Pondicherry	10646	1818	2277	8830	2286	25857	2748
31	Chandigarh	8422	882	607	3828	1799	15538	1651
32	A & N Islands	3321	652	545	1870	669	7057	750
33	D & N Haveli	2346	295	337	795	275	4048	430
34	Daman & Diu	1898	189	120	690	274	3171	337
35	Lakshadweep	603	207	147	505	216	1678	178
	Total	10634881	1640868	1261722	6105477	2263821	21906769	23,28,684

* As per Census 2001.

** Estimated @ 10.63% of total Disabled population as per NSSO survey 2002

PwMDs – Person with Multiple Disabilities

1.1. Aims and Objectives

As per the memorandum of association of the Institute, NIEPMD has the following aims and objectives

- i. To undertake **human resource development** in various functional areas covering inter-disciplinary, multi-disciplinary and trans-disciplinary activities for empowerment of Persons with Multiple Disabilities through the state of the art rehabilitation intervention viz., educational, therapeutic, vocational, employment, leisure and social activities, sports, cultural programs and full participation as also through developing various approaches including community rehabilitation, project management and capacity building of Non-Government Organizations (NGOs).
- ii. To **promote and conduct research** in all areas relating to Multiple Disabilities and to develop trans-disciplinary models and strategies for social rehabilitation to meet the needs of diverse groups of people with Multiple Disabilities, by the society hereinafter referred to as “the Institute” or through NGOs.
- iii. To conduct, sponsor, coordinate or subsidize research into all aspects of the education, rehabilitation, **capacity building, and independent living** of Persons with Multiple Disabilities by the Institute or through NGOs.
- iv. To undertake and /or sponsor the **training of trainers and professionals** in the areas of early intervention, early childhood education, special education, vocational training & employment, independent living, community rehabilitation and project management, therapists and such other personnel as may be deemed necessary by the Institute in empowering the Persons with Multiple Disabilities.
- v. To manufacture, fabricate, adapt or promote or subsidize the **manufacture of prototypes** and distribution of any or all aids designed to promote any aspects of the education, therapy and rehabilitation of the persons with Multiple Disabilities.

The summary of objectives is:

- To undertake development of human resource for management, training, rehabilitation, education, employment and social development of Persons with Multiple Disabilities.
- To promote and conduct research in all areas relating to Multiple Disabilities.
- To develop Transdisciplinary models and strategies for social rehabilitation and to meet the needs of diverse groups of people with Multiple Disabilities.
- To undertake services and outreach programs for the Persons with Multiple Disabilities.

VISION

The persons with Multiple Disabilities have equal rights to lead a better quality of life. This may be enabled with committed professionalism, accessible environment, equal opportunities, positive attitudes and appropriate, affordable, acceptable and available technological interventions.

MISSION

To provide need based comprehensive rehabilitation through team approach facilitating inclusion, ensuring empowerment of persons with Multiple Disabilities and their families and by substantiating field based research and development of human resources.

VALUE STATEMENT

Promoting quality of life for persons with Multiple Disabilities, through equal participation of clients, families, professionals and community agencies.

Chapter 2

Organizational Structure

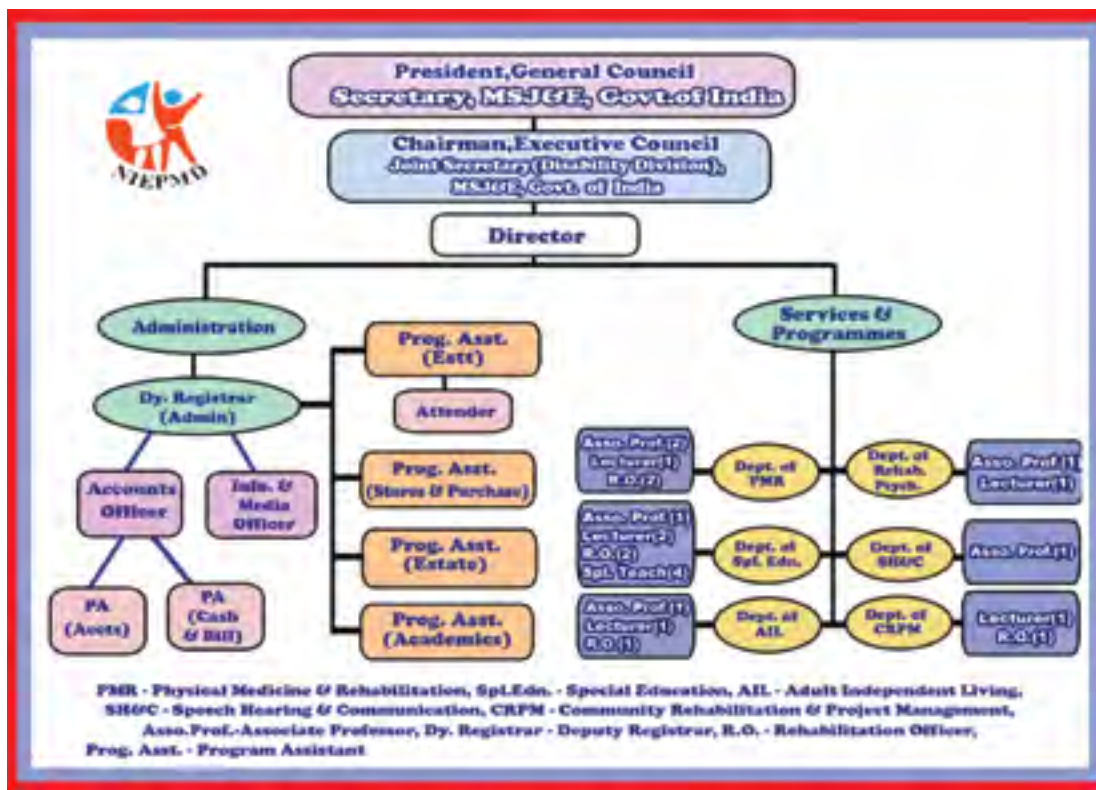
National Institute for Empowerment of Persons with Multiple Disabilities is an Autonomous body under the Ministry of Social Justice & Empowerment (MSJ&E), Govt.of India registered under The Tamil Nadu Society Registration Act 1975 (Tamil Nadu Act 27 of 1975) bearing Registration No: 59/2006 dated 23rd October 2006.

The Secretary, MSJ&E, is the President of General Council (GC) and Joint Secretary (Disability Division) is the Chairperson of the Executive Council (EC). The Director, NIEPMD carries out the activities of the Institute under the guidance of the GC and EC.

2.1 The General Council: This council guides and monitors the overall functions of the institute. The composition of the general council is given in **Appendix A** (Page No 91).

2.2 The Executive council: This council executes and directs all activities of the institute under the control and direction of the General Council. The composition of the Executive Council is given in **Appendix B** (Page No 93).

NIEPMD Organizational Chart



The Director as the Head of the department supervises and coordinates the Administration, Services and Programs. In the Administration, there are Deputy Registrar, Accounts Officer, Information & Media Officer and Program Assistants. The Services and programs comprises of 6 departments namely Department of Physical Medicine and Rehabilitation, Rehabilitation Psychology, Adult Independent Living, Speech, Hearing and Communication, Community Rehabilitation & Project Management, Special Education and in the model school there are four special teachers.

Chapter 3

Human Resource Development

One of the objectives of the institute is to develop human resources to deal with the rehabilitation of Persons with Multiple Disabilities. Presently, very few organizations are providing services to Persons with Multiple Disabilities. Past experience has shown that early detection and intervention programs, educational and rehabilitation measures have significantly improved the quality of life of Persons with Multiple Disabilities. Being sensitive to the limited availability of services in the field of Multiple Disabilities, NIEPMD started human resource development programs to stimulate the growth of services for Persons with Multiple disabilities. The Human Resource Development (HRD) activities include Diploma and Certificate level courses (Non-semester pattern), and various short term training programs besides orientation programs and refresher courses.

3.1 Long Term Training Programs:

The institute has imparted the following programs on a long term basis ,for those who have chosen rehabilitation field as a career with an objective of becoming Special teachers and Prosthetic and Orthotic personnel. The courses offered are **Diploma in Special Education (Autism Spectrum Disorder, Cerebral Palsy and Deafblind)** and **Certificate course in Prosthetics and Orthotics**, each of One year duration. The total number of Trainees were 47 (Diploma Trainees 42 and Certificate trainees 5).

Admission Procedures: The admission procedure starts with the admission notification of the courses in leading National and State level Newspapers namely, The Employment News (English, Hindi & Urdu) The Hindu (All India), Dinakaran and Daily Thanthi (Tamil) in the month of May. The Selection was based on essential qualification and weightage was given for Marks, additional qualification, experience or sponsorship, rural candidates, parent/sibling/ward of Persons with Disabilities (PwDs). The interview was conducted to test the knowledge, attitude and interest towards rehabilitation. The panel for selection of the candidates consists of following members

1. Commissioner for SC/ST
2. Expert in the field of Rehabilitation
3. Representative from the office of state commissioner for differently abled (Tamil Nadu)
4. Head of the Institution and
5. Course Coordinator

The committee selects the candidates as per the reservation policy adopted by Govt. of India, for admission to Central Educational Institutions. The fees structure is as follows :

Table 2: Fee structure of the courses

Sl.No	Particulars	DSE (Db)	DSE (CP)	DSE (ASD)	CPO
01	Tuition Fee	5000	5000	5000	3500
02	Laboratory fee	500	500	500	1500
03	Students Activities/cultural/recreation	1000	1000	1000	1000
04	Caution Deposit (refundable)	1000	1000	1000	1000
05	Handouts/Material/calendar fee	500	500	500	350
06	Medical Insurance	400	400	400	400
07	Mid term/Stationary fee	100	100	100	100
08	Medical Checkup fee	50	50	50	50
09	Identity card fee	50	50	50	50
10	Examination fee	As per University norms			
	Total	8600	8600	8600	7950

3.1.1. Diploma in Special Education (Cerebral Palsy)

The course structure provides a comprehensive understanding of the various needs of children with Cerebral Palsy and to meet those needs in a special school and regular school classrooms.



3.1.2. Diploma in Special Education (Deafblind)

The one year diploma course is aimed at preparing special teachers, who would be competent in screening, performing educational assessment and implementing programs, including teaching, training and management of children with deaf blindness. The basic objective is to provide first hand experience to the trainees about the implications, emerging trends, assessment and intervention strategies with respect to Deafblindness.



3.1.3. Diploma in Special Education (Autism Spectrum Disorder)

This course is designed to train the teacher trainees who are committed to work with children diagnosed with Autism Spectrum Disorders. The course structure provides a comprehensive understanding of the various needs of children with Autism Spectrum Disorders and their needs in special schools and regular schools.



3.1.4. Certificate course in Prosthetics & Orthotics:

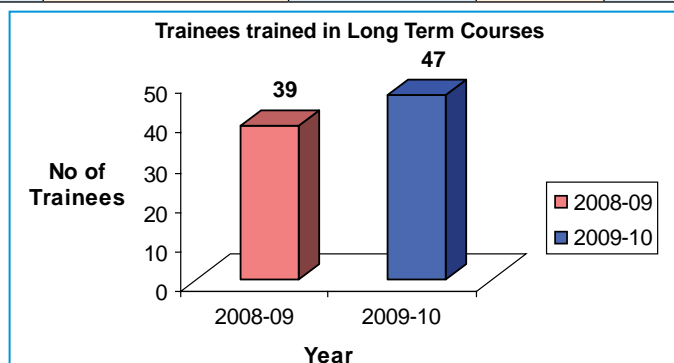
This course is designed to train personnel for assembly and fitting of orthopedic appliances, artificial limbs and other rehabilitation aids under the supervision of a Prosthetist & Orthotist.



Table 3: Application received & Enrollment details in Long Term Courses 2009-2010

Name of the Course	Duration	Total Intake	Eligibility	Admission Procedure	Number of Applications Received	Number Enrolled	No. of Passed out student
DSE (Cerebral Palsy)	01 year	14	10 +2	+2 marks and Interview	41	14	14
DSE (Deaf blind)	01 year	14	10 +2	+2 marks and Interview	24	14	14
DSE (Autism Spectrum Disorders)	01 year	14	10 +2	+2 marks and Interview	16	14	13
CPO	01 year	10	10th or ITI	10th or ITI Marks and Interview	05	05	05

The details of the above mentioned course curricula, Objectives of the course, Region/State wise details, Category of reservation, placement status and percentage of marks are appended in **Annexure 1** (Page No 95).



3.2. Short Term Training Programs (STTP):

The scope of the training program is to create awareness and to enhance the knowledge in the field of rehabilitation of Persons with Multiple Disabilities. It helps the participants to deal with the clients and adopt the latest techniques. They were mainly rehabilitation professionals, administrators, caregivers and parents.



Short term training program for Professionals at Nagercoil

During the year 2009-10, the institute had conducted 70 programs including Training Programs for professionals in the field of Rehabilitation, Orientation and Awareness programs for Parents, Teachers and Students. A total of 3432 participants benefited.

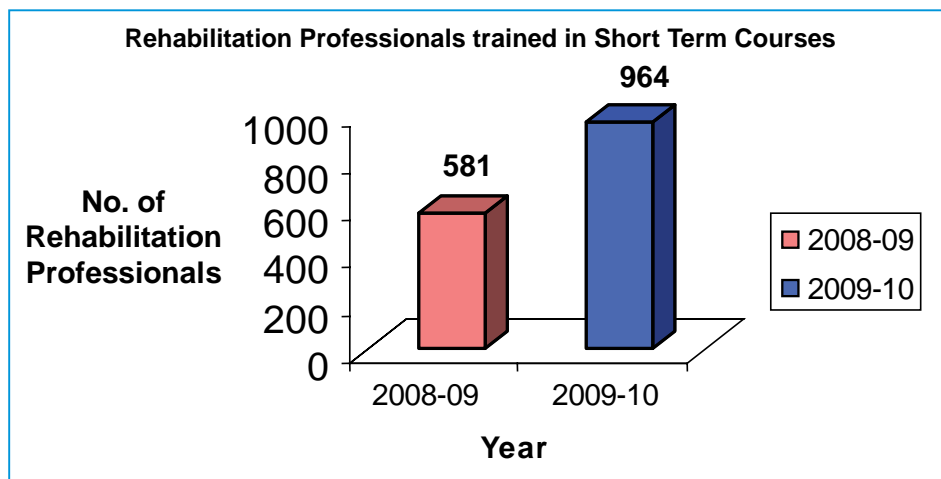
Table 4: Short term Training Programs

SI.No	Program	No of Program	No of Participants
1	Refresher Training Program	33	964
2	Orientation & Awareness Program	24	1621
3	Parental Training Program	13	847
	Total	70	3432



Parents of Persons with Multiple Disabilities participating in Training Program at Coimbatore Centre.

The details of all the above mentioned training programs are in **Annexure 2** (Page No 106).



3.3 Faculty Members/Officials participation in Workshop/Conference & Seminars:

Apart from implementing different programs on the process of developing the human resources in the field of disability, the institute also makes a note that the professionals involved in it, are also keeping themselves updated with the recent developments and knowledge pertaining to their fields. The list of the faculty members / officials who participated in the workshops / conferences /seminars conducted by the various agencies and papers presented are in the **Annexure 3** (Page No 111).

Chapter 4

Services and Programs

4.1 Services

The institute had undertaken assessment and evaluation covering case history taking, physical and medical examination, intellectual and developmental assessment, special educational assessment, therapeutic need assessment, and vocational assessment. Neurological screening and examination had also been also carried out in consultation with the Government General Hospital, Chennai. Need based intervention programs were developed to provide training for persons with Multiple Disabilities at various sittings. **253** clients (162 Male and 91 Female) with multiple disabilities were registered at the centre during the year 2009-10. **635** clients (398 Male and 237 Female) with single disability were registered in the institute besides persons with Multiple Disabilities. A total of **888** clients were registered in the year 2009-10.

The number of persons with single disabilities is more as per NSSO 2002, of which 10.63% are multiple disabilities. Challenges are less when compared to persons with multiple disabilities. As a matter of zero rejection Policy NIEPMD is providing services to persons with single disabilities also. As such the number of persons with single disabilities registered is almost twice the number of registered cases with multiple disabilities.

Table 5: No. of clients registered in the year 2009-10

S.No	Mode	No. of Clients	
		Single Disability	Multiple Disabilities
1	Centre based	635	253
2	Extension service	1262	717
3	Mobile Service	170	28
	Total	2067	998

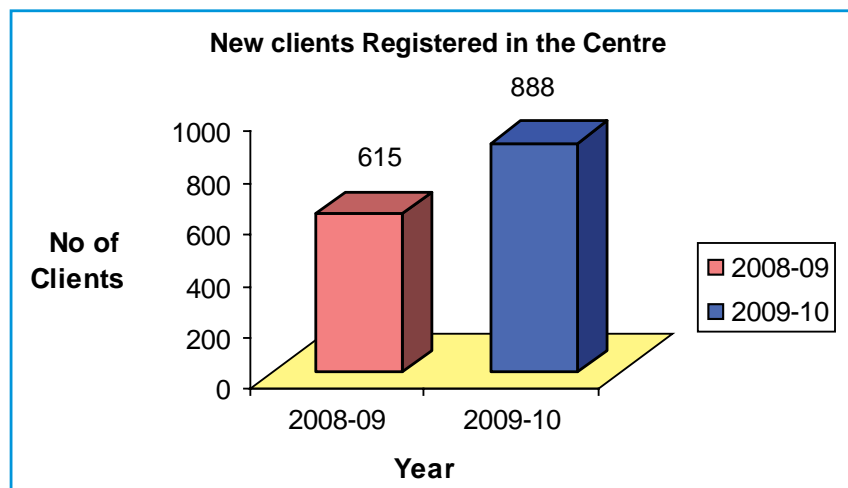




Table 6: Clients registered with NIEPMD along with the combinations

Sl.No	Category of Disability	Male	Female	Total
01	CP + MR	81	48	129
02	AU + MR	22	04	26
03	HI + MR	09	06	15
04	HI + VI	06	04	10
05	MR + MI	04	06	10
06	MR+HI	05	03	08
07	CP+VI	03	05	08
08	VI + MR	03	02	05
09	CP+MR+LV	03	02	05
10	CP+MR+AU	04	01	05
11	VI+CP+MR	04	00	04
12	LV + MR	03	00	03
13	CP + HI	02	01	03
14	VI + AU + LD	02	01	03
15	HI+CP+MR+VI	02	01	03
16	MR+LD	01	01	02
17	LV+CP	01	01	02
18	LV + LD	00	02	02
19	LV+ASD+MR	01	00	01
20	HI + CP + MR	01	00	01
21	LV+ HI	00	01	01
22	MR+AD+CP	01	00	01
23	VI + AU	01	00	01
24	CP +HI+LV	01	00	01
25	CP+MR+HI+LV	00	01	01
26	VI+LD	00	01	01
27	MI+HI	01	00	01
28	MR+VI+HI	01	00	01
	Total	162	91	253

NIEPMD follows a Transdisciplinary team model to deliver services. The following are the departments in the transdisciplinary team.

A Transdisciplinary team Approach of rehabilitation for Persons with Multiple Disabilities



- PMR** – Physical Medical Rehabilitation
- PT** – Physiotherapy
- OT** – Occupational Therapy
- P & O** – Prosthetics & Orthotics
- CRPM** – Community Rehabilitation and Project Management
- ASD** – Autism Spectrum Disorder

- Spl. Edu** – Special Education
- EI** – Early Intervention
- ECSE** – Early Childhood Special Education
- CP** – Cerebral Palsy
- DB** – Deaf Blind

4.1.1 Department of Physical Medicine and Rehabilitation:

In this department the initial Medical diagnosis is made by the doctors wherein treatments are given for persons with disabilities. The number of clients benefited during the year 2009-10 is as follows.

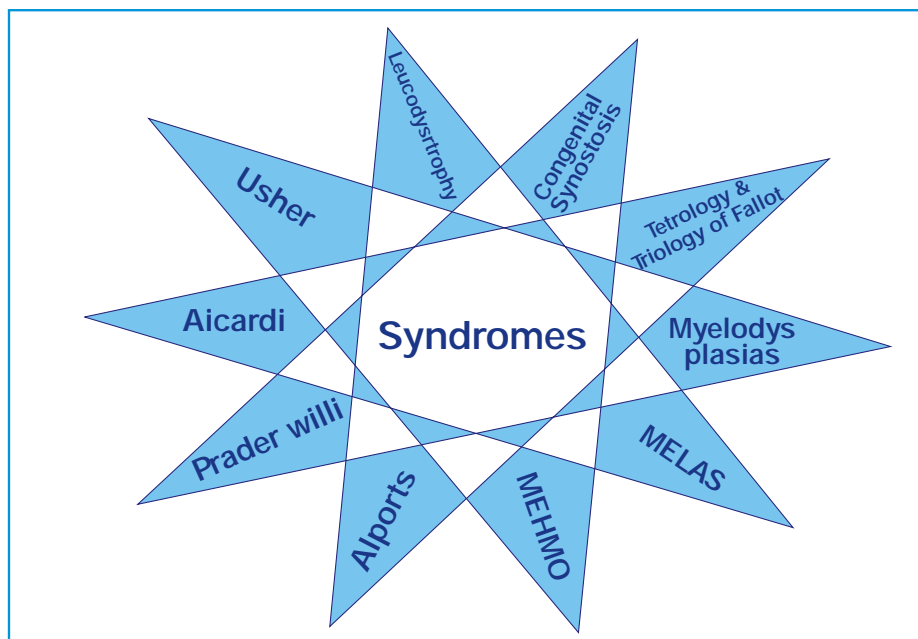
New Cases			Follow up sessions		
Single Disability	Multiple Disabilities	Total	Single Disability	Multiple Disabilities	Total
451	243	694	260	130	390



Physiatrist examining a Congenital Pseudo arthrosis of Humerus (false joint)

Different therapeutic interventions are provided by different units under this department, which includes Physiotherapy, Occupational Therapy, provision of Prosthetics and Orthotics appliances to persons with disabilities.

Very rare disorders caused due to genetic, metabolic, neurological and endocrinological disorders have been registered. To mention a few syndromes registered at NIEPMD are



Usher syndrome: A person, who has Hearing Impairment and Visual Impairment. The person with usher has a condition called Retinitis pigmentosa in the eye. The night vision is affected. Only tubular vision is present. Some clients become totally blind.

Aicardi Syndrome: The Corpus Callosum is the structure connecting two sides of the cerebral hemispheres. There is agenesis of the Corpus Callosum. Other problems associated are motor problems, seizures and mental retardation. Also has vision problem.

Mostly females are affected than males

Prader-Willi Syndrome: A person, who has voracious appetite and is obese with associated undescended testis and also hearing impairment.

Alports Syndrome: A person, who has short stature, mental retardation and problems in night vision due to Retinitis Pigmentosa.

Mehmo Syndrome: A person, who has Muscle weakness, Hearing Impairment, Eye defect, Mental Retardation and Skin disorder.

Melas Syndrome: A person, who has a Mitochondrial enzyme defects and there is progressive deterioration in muscle function, vision and hearing.

Tetrology and Triology of Fallot: A person, who has four or three defects in the Heart

It is associated with hearing impairment or visual impairment and mental retardation.

Myelodysplasias: A condition, where the development of brain is disturbed and there is protrusion of the brain or Spinal cord through defects in the skull or the vertebral column.

Congenital Synostosis: Rare fusion of joints, malformation of joints.

Leukodystrophy: A person, who has progressive atrophy of the white matter of the brain and loss of function of muscles, associated with hearing impairment, visual loss and seizures.

The Neurology clinic started at NIEPMD during this financial year is held on second Thursday of every month. The Neurologist from **Institute of Neurology, Government Hospital, Chennai**, examines and prescribes drug for seizures or the clients are referred to the government hospital for further investigation and treatment.

The total number of clients who received services from Neurological Clinics is as follows

Male	Female	No. of Clients
50	34	84

Twelve (12) persons with Neurological problems were investigated at the institute of Neurology free of cost and treated for disorders like Dystonia after admitting in the hospital. NIEPMD also distributes antiepileptic and anti psychotic drugs to persons with seizures and the number of follow ups were good.

Sankara Nethralaya eye hospital conducts eye clinic on Wednesdays and Fridays. They had examined & prescribed glasses, also discussed with rehabilitation professionals and care givers on techniques of low vision management. Total number of persons examined at NIEPMD is as follows.

Male	Female	No. of Clients
77	53	130

The Ragas Dental College had conducted free dental examinations at NIEPMD on all Wednesdays, and the total numbers of beneficiaries is as follows.

Male	Female	No.of Clients
85	76	161

4.1.1. a. Physiotherapy Unit:

Physiotherapy department provides services for Clients with Cerebral Palsy, developmental Disabilities and other clients with orthopedic disabilities. This department aims at improving functions and developing activities of daily living. The clients are assessed for the function of Musculoskeletal, Neurological, Cardiovascular and Pulmonary systems and they are provided with age appropriate goals which are concerned with achieving and restoration of function.

These goals are reviewed periodically and new goals are set to achieve greater heights. The clients are provided with regular follow up and consultation.



Balancing exercise given for client having Cerebral Palsy

Availability of electrotherapy equipment is an added advantage for clients with Orthopaedic Handicap which is one of the components of multiple disability i.e.(OH with HH, OH with VI etc). Tread mill Training is used to improve endurance and achieve proper pattern of gait, various other types of therapies are provided to improve balance, coordination, reduce muscle tone and facilitate movement.

Research activities have been initiated to study the pulmonary function, effects and need of pulmonary rehabilitation for children with cerebral palsy and appropriate seating pattern for clients with cerebral palsy. The number of clients benefited during the year 2009-10 is as follows.

New Cases			Follow up sessions		
Single Disability	Multiple Disabilities	Total	Single Disability	Multiple Disabilities	Total
187	200	387	661	2714	3375

4.1.1. b. Occupational Therapy Unit

Occupational therapy services aims at maximizing the client's independence in activities of daily livelihood. It's done through client's participation in purposeful and productive activities. In the Occupational Therapy unit, services are provided for clients with Cerebral palsy, Mental Retardation, Autism, Deafblind, Attention deficit disorder, Attention deficit hyperactivity disorder, neurological disorders, psychiatric conditions and other developmental disabilities.



Occupational Therapy intervention to the child with Cerebral Palsy

The main focus of Occupational Therapy aims at improving the functional abilities of the client, including both gross motor and fine motor skills, achieving developmental milestones, enhancing the cognitive-perceptual abilities and activities of daily living skills. Clients attending occupational therapy services are subjected to initial evaluation, followed by goal setting and treatment implementation. Regular monitoring of progress of the clients is observed and documented. Prescription of Splints & adaptive devices for clients with neurological impairment is also done. Fitting of the splints, the wearing schedule & the maintenance of splints are explained to them. Realistic goals of individual clients are met through Occupational Therapy services. The detail of clients benefited during the year 2009-10 is as follows.

New Cases			Follow up sessions		
Single Disability	Multiple Disabilities	Total	Single Disability	Multiple Disabilities	Total
251	80	331	1372	2018	3390

4.1.1. c. Prosthetic and Orthotic Unit

Remarkable work has been done by this department in fitment of various orthotic and prosthetic appliances, splints, special shoes and seating devices at the centre and also for clients identified in camps.



Fitment and alignment of upper limb prosthesis

The detail of clients benefited during the year 2009-10 is as follows.

New Cases			Follow up sessions		
Single Disability	Multiple Disabilities	Total	Single Disability	Multiple Disabilities	Total
110	165	275	327	156	483

Apart from providing sufficient aids and appliances, training regarding the use of appliances is also imparted to the client and family members. They are also taught to carry out minor repairs. The faculty in the department are also contemplating to introduce modern technologies which would facilitate for easy mobility as well as for day to day activities and thus enhancing their quality of life.

4.1.2 Department of Rehabilitation Psychology:

The department deals with assessment of cognitive skills, behavioral management and cognitive therapy for persons with disabilities. Various advanced Tools are used to assess the Intelligent Quotient level of Persons with Disabilities. Family system approach is widely used to get the child to be accepted in the family in terms of his/her physical, emotional and psychological differences from others. Apart from the intervention model for the children, the family members are also guided through various training programs to enhance the total quality of life of the person with disability and the family as a whole. The department is a place where clients from different parts of Tamil Nadu and other states have received attention and empathy. The family members have also been empowered to be apart of the rehabilitation team. Those with Specific Learning Disabilities also get specific interventions. The details of clients benefited during the year 2009-10 are as follows.



Psychologist assessing the IQ level of a Client

New Cases			Follow up sessions		
Single Disability	Multiple Disabilities	Total	Single Disability	Multiple Disabilities	Total
302	158	460	265	154	419

4.1.3. Department of Special Education:

This department provides special education through two levels. One is Special School program and another one is education through individual sessions for those who come on regular follow up basis visiting NIEPMD once or twice a week depending on the distance to be traveled by the person with multiple disabilities.



Developing Pre-vocational Skills to Person with Multiple Disabilities

4.1.3. a. Early Intervention: Children under 3 years, if identified early will improve in all areas of development because of the plasticity of the brain. Parents have been empowered to detect disabilities at the earliest and to use indigenous materials to repeat the neuro developmental skills training at home. A service delivery model that could be of use to all is being developed by NIEPMD. A check list to detect and profile persons with multiple disabilities is developed by NIEPMD and is getting standardized. **SMILES** stands for (**S**ensory, **M**otor, **I**ntellectual, **L**anguage & Communication, **E**motional and **S**ocial assessment check list). The detail of clients benefited during the year 2009-10 is as follows.

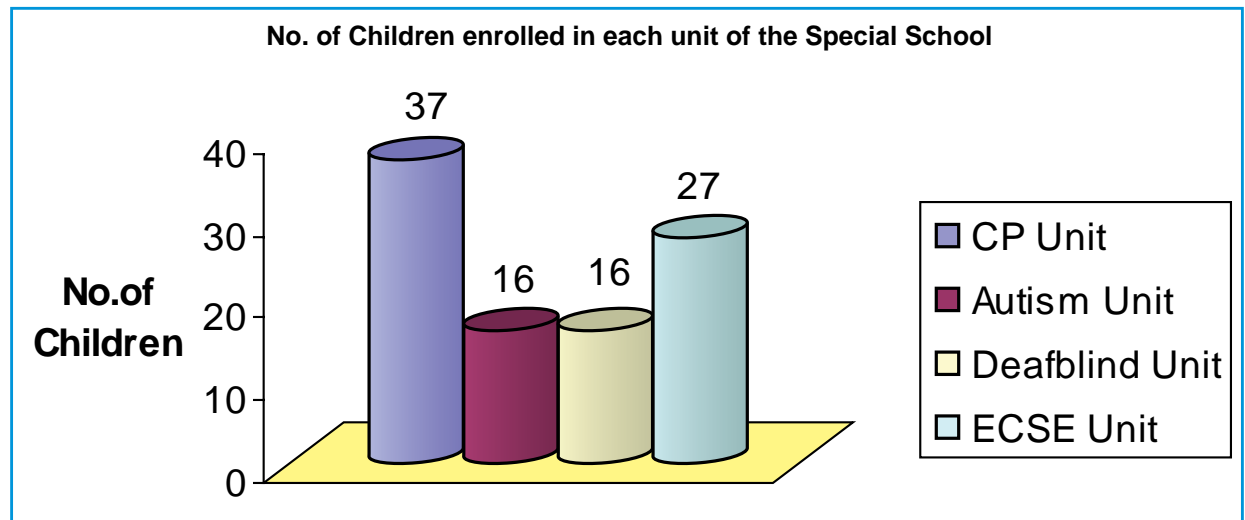
Male	Female	No. of Clients
164	228	392



Intervention being given to a Child with Multiple Disabilities

A model school named THIRAMAI (meaning Ability) is also functioning and has various classrooms for students based on the category of multiple disabilities. This school registers only clients with Multiple Disabilities.

This school registers only clients with Multiple Disabilities. The parents have to be counseled about the time taken for obtaining a positive result. The National Institutes have only model schools that are the practical laboratories for the teacher trainees. The teacher student ratio has to maintained at 1:4. More special educators are required to work with the clients.



National Institute for Empowerment of Persons with Multiple Disabilities

Unit for Early Childhood Special Education: Here the special educator focuses on inclusion of the child into the main stream. Children below 6 years are given training on Self help skills, language and communication, and cognition. There are 27 clients enrolled in this unit during the year 2009-10. The Combination of Disabilities is as follows.

Combination of Disabilities	No. of clients
CP + Developmental Delay	17
AU + Developmental Delay	10
Total	27

Unit for Cerebral Palsy with additional disabilities: This unit has three class rooms, Primary, Secondary, and Prevocational. The primary class admits children of the age group 7-10 years and they are trained in functional skills. In the Secondary class room children between the age group 11 to 14 years are trained in functional areas including academic and domestic skills. Prevocational class room admits children above 14 years of age and they are prepared for taking up Employment. 37 clients were enrolled in this unit. The Combination of Disabilities is as follows

Combination of Disabilities	No. of clients
CP + MR	23
CP + LV	03
MR + Motor delay	11
Total	37

Unit for Deafblind: This class is unique as each person with Deafblindness is different from the other as the degree of visual and hearing impairment varies and because of associated problem that interferes with the development. The three major areas that are given importance are, communication, gathering information and mobility. These children are also grouped into early intervention, functional academic, transition, and vocational groups. Special strategies are used to develop communication. Tactile mode along with residual vision and hearing helps to explore and learn from the teacher. Peer tutoring helps in the development of self help skills and academics. Lots of real life activities are given. There are 16 clients enrolled in this unit. The Combination of Disabilities is as follows.

Combination of Disabilities	No. of clients
HI + VI + MR	14
VI + HI	01
HI + MR	01
Total	16

Unit for Autism: Children with Autism Spectrum Disorders and additional disabilities are trained to develop communication, socialization and play with their peers. Special techniques like behavior modification and sensory integration therapy are used to control unwanted movements and mannerisms. There are 16 students with ASD associated with Mental Retardation enrolled in this unit. The Combination of Disabilities is as follows.

Combination of Disabilities	No. of clients
ASD + MR	16
Total	16

4.1.4. Department of Speech, Hearing & Communication:

The department provides service to children having problems related to hearing and communication. The ranges of activities are diagnosis, intervention, follow-up and demonstration of activities with focus on comprehension & expression of language/speech. A client centered approach is practiced, highlighting the abilities of the children, rather than their disabilities. A format called 'my talented child' is used for this purpose, where the parents and family members are included as partners in the intervention program.



Intervention to the Clients by Speech Pathologist

The detail of clients benefited during the year 2009-10 is as follows.

New Case			Follow up sessions		
Single Disability	Multiple Disabilities	Total	Single Disability	Multiple Disabilities	Total
185	247	432	142	239	381

4.1.5. Department of Community Rehabilitation and Project Management:

The department has dedicated its services for the un-reached areas through extension services, out reach programs, parents group meeting and capacity building programs. The department also manages the case registration and case records of the clients.



Registration of Clients



Family Counseling at CRPM Department

The detail of clients benefited during the year 2009-10 is as follows.

New Cases			Follow up sessions		
Single Disability	Multiple Disabilities	Total	Single Disability	Multiple Disabilities	Total
345	200	545	272	194	466

4.1.5.a. Mobile Services

The aim of mobile service is village based surveys for identifying persons with Multiple Disabilities, Single disabilities and counseling them for effective management with in the respective community and family. This service also link the Persons with disabilities with available service provision at the village level viz., Anganwadi centre, Primary Health Centre and Sarva Sikhsha Abhiyan (SSA) besides, referring them to NIEPMD for various Rehabilitation services and supplying of suitable aids and appliances under ADIP scheme. The Mobile service is covering with in the 25kms radius of NIEPMD. Apart from identification, mobile service also aims to create an awareness about NIEPMD and Multiple Disabilities prevention, identification and referral. The services are at present carried out by the caregivers selected from the respective community and rehabilitation professionals.



Rehabilitation Professionals giving intervention during Mobile Service

A total no of **28** clients with multiple disabilities and **170** clients with single disabilities were identified during the year 2009-10. So far the Mobile service extended the coverage of the program within 15 kms of radius of NIEPMD, hence the number of clients covered by mobile services is very minimal.

Table 7: Information about the villages covered under mobile service and clients with disabilities registered for services during the year 2009-10

Month/ Year	Name of the village visited	Multiple Disabilities			Single Disability		
		Male	Female	Total	Male	Female	Total
June - 2009	Thaiyur – 3 Block's	04	01	05	09	06	15
July - 2009	Thaiyur, Navalur, Kelambakkam Pudupakkam, Inchankadu, Kayar Vadaneli, Kovalam, Pattipulam	00	02	02	12	17	29
August - 2009	Sirdavour, Amur, Manamathi	02	04	06	15	08	23
Dec - 2009	Mambakkam, Kolathur	02	00	02	20	10	30
Jan - 2010	Poonmar, Sonalur, Pollacheri	02	01	03	18	12	30
Feb - 2010	Pungeri, Panagadupakkam, Kayar	02	03	05	6	12	18
March - 2010	Navalur, Siruseri, Talambur, Shollinganallur	03	02	05	11	14	25
Total		15	13	28	91	79	170

4.1.5.b. Extension Services

NIEPMD in collaboration with State Resource Training Centre (SRTC), Chennai initiated rehabilitation services for the urban population. The Professional team, comprising of Special Educator, Speech & Language pathologist and Audiologist, Pediatrician and Psychologist attends to clients on regular basis and referrals were made for **1979** clients.

Type of Disability	No. of clients
Single Disability	1262
Multiple Disabilities	717
Total	1979



Teachers undergoing Training on Identification of Disabilities

NIEPMD in collaboration with Sarva Shiksha Abhiyan, Pondicherry (SSA) organized a two month long Orientation Program for the Regular school teachers of Govt. school on the Identification of Disabilities and its management in the regular school classrooms. A total of **1500** regular school teachers were trained. Following the training, an assessment camp was held, where 211 children with disabilities were assessed, and their parents were counseled. The teachers were provided with information pertaining to the management in the regular classrooms.

4.1.5.c. Family Cottage Services

One family cottage is available for the families visiting NIEPMD from far-off places. They can stay for a period of five days and receive professional services and training such as skill training, individual family counseling, management of problem behaviors, speech-language therapy, medical advice, physiotherapy, occupational therapy, etc. **10** clients with multiple disabilities were provided with the family cottage services.



A view of the Family Cottage



Table 8: Details of clients who availed Family cottage services in the year 2009-10

Sl. No	Category of Clients	Area of residence of the clients	Duration of the stay/Period of date	Interventions undertaken
1	CP + MR MD/75/09	Myladuthurai, Tamil Nadu	16 – 20 th March 2009	Special Education, Psychology, Speech and Language, OT, PT
2	CP + MR 120/09	Hosur, Tamil Nadu	27 – 30 th April 2009	Special Education, Psychology, Speech and Language, OT, PT
3	CP + MR MD/62/09	Karaikal, Pondicherry	25 – 29 th May 2009	Special Education, Psychology, Speech and Language, OT, PT
4	Db MD/374/09	Pondicherry	22 – 23 rd July 2009	Special Education, Psychology, Speech and Language, OT
5	Autism + MR MD/381/09	Nagapattinam, Tamil Nadu	27-31 st July 2009	Special Education, Psychology, Speech and Language, OT
6	Autism + MR 389/09	Ramanathapuram, Tamil Nadu	14-18 th September 2009	Special Education, Psychology, Speech and Language, OT
7	Autism + MR MD/413/09	Kerala	5-9 th December 2009	Special Education, Psychology, Speech and Language, OT
8	Autism + MR MD/475/09	Kerala	29-31 st December 2009	Special Education, Psychology, Speech and Language, OT
9	CP + MR MD/521/09	Arakkonam, Tamil Nadu	29 th Sep – 1 st October 2009	Special Education, Psychology, Speech and Language, OT, PT
10	CP + MR MD/227/09	Hosur, Tamil Nadu	1-4 th September 2009	Special Education, Psychology, Speech and Language, OT, PT

4.1.5. d. Follow up Services:

After the preliminary assessment the clients are sent for detailed assessment & training in various departments according to the need. Parents are also guided to prepare the appropriate materials for skill development. **928** persons with Multiple Disabilities, including those who had been registered with us earlier were provided services in **14351** follow-up sessions, during the year 2009-10.

4.1.6. Department of Adult Independent Living:

This department focuses on empowering adults with Multiple Disabilities and their family members, in order to eke out a better quality of life. The departmental activities includes, assessment & vocational guidance, skill development programs, empowerment of family members & Persons with Multiple Disabilities, vocational training program, empowerment through training program & workshop, resource analysis for empowerment – A Clinical Research.



Vocational Training given to Adults with Multiple Disabilities

Apart from skill training and vocational training program, the departmental activities further expanded during this year by providing vocational guidance and counseling services for families having children with Multiple Disabilities. In addition, the concept of empowering the family members through mother to child approach is being continued and also initiating income generation program for economic independence. So far 28 mothers have been trained in this program. The detail of clients benefited during the year 2009-10 is as follows.

New Cases			Follow up sessions		
Single Disability	Multiple Disabilities	Total	Single Disability	Multiple Disabilities	Total
61	28	89	1850	1826	3676

Another major achievement during this year was networking with NGO's working for persons with Disabilities in North Eastern Region, by way of conducting North Eastern Regional Workshop on "Empowerment and Management of Persons with Multiple Disabilities" for CEO of the NGO's from 4th- 5^h November 2009, in association with Vocational Rehabilitation centre for Handicapped, Bhubaneswar, Orissa.

21 beneficiaries benefited in this department through various programs. The details are as follows.

Name of the program	No. of Beneficiaries
Home based programs	09
Skill Training programs	12
Total	21

Success Story

Master Naveen is a 6 year old boy having **Cerebral Palsy (Spastic Quadriplegia) with Mental retardation and seizure disorder**. He has registered in NIEPMD with complaints of unable to roll, sit, stand and walk & speak. NIEPMD's multi-disciplinary team professionals had done detailed assessment on each aspect such as Physiotherapy, Occupational Therapy, Speech therapy, Psychology and Early Childhood Special Education. It was found that he has to undergo intensive Neuro Developmental Therapy (NDT) to improve his sitting balance which will improve to explore the environment and to develop communication. Initially he had undergone physiotherapy 3 days in a week and later 2 days in a week. Techniques of positioning and facilitation were taught to the parents and so therapy has been carried out by mother and siblings at home. At the time of assessment he could hold his neck partially, turns from supine, lying to side lying and sits with support (i.e. in corner chair & corner of the wall). Our goal was to improve his sitting balance and standing with support which will help him to walk independently at a later stage.



The sessions included stretching, balancing exercises and strengthening exercises in different positions. Later he developed rolling from supine lying to prone lying, lying to sitting and sitting without support for 10 to 20 minutes and maintaining quadruped position for few minutes. Now his sitting balance has improved. He received behaviour modification therapy from Psychologist, which helped him to be away from his mother. He is attending special school and able to hold the crayon & scribble, identify numbers, colors and feed himself using an adopted spoon. Now he attends in group therapy for communication and he talks phrases.

Success Story



Baby Sharmi was 1 ½ year old girl. She came to NIEPMD with the complaints of delayed birth cry, spasm in both legs, and lazy eye in the right eye.. Sharmi used to indicate her needs by crying and was dependent on her mother for feeding. She never wanted to hold anything. In Early Intervention she received Multi sensory training. She was given visual stimulation and also trained by Patching the eye on the left side. Then, she started using right eye. She was given speech therapy in group situation, and phrases like 'give me', 'pick up,' 'T.V on' etc were learnt by her. Each time when sharmi produced sounds, words, phrases she was immensely reinforced that made her to learn more functional words. Sharmi's mother was given counseling by the Psychologist to cope up with the stress at home due to emotional disturbances. Sharmi's hand functions improved with Occupational Therapy. With regular physiotherapy she started walking with support. In the session of Occupational Therapy and Physiotherapy, she was encouraged to do purposeful activities for proper function of hand and mobility activities. Within the short span of 1 ½ years of rehabilitation she has improved. In the At present she is studying in Early Childhood Special Education unit of Thiramai Special School, NIEPMD.

"Cheerfulness and contentment are great beautifiers and are famous preservers of youthful looks."

- Charles Dickens

Success Story

Mr. Mahadevan, who is a person with Deafblindness came along with his father to NIEPMD. He was looking scared and dejected and expected that nobody will offer him a place to work as it happened in the previous work places.



Mahadevan guiding a client with Deafblindness to the Theme Park

He was first appointed as a Data Entry operator in the unit for Deafblind. He has completed Bachelors Degree in Commerce (B.Com) and also passed Type writing in Higher Grade Examination. He also has a sound knowledge of Tally accounting software.

Mr Mahadevan managed well to read the words written in English by different professionals in NIEPMD. A few months passed by, he started walking even when the light is dim. When asked it was found that he counts the number of steps he has to take to reach to a particular room inside the service area. He gathered courage to travel alone 70 kilometers to and fro from his house to office. He was always assisted to cross the road and find the bus that goes to his place. Within 6 months a great transition took place. Mahadevan became interested in teaching and looking after other children with deafblindness in the unit. He had his own methods to make them learn skills and he found that the younger ones need to be encouraged, and their behaviours have to be managed. He began to learn Braille and also to type Braille. At present he has got the approval of Rehabilitation council of India to do the full time course on Diploma in Special Education (Deafblind) and now he is a trainee undergoing the course to become a qualified teacher for the persons with Deafblindness.

Success Story

Master Sony is twelve year old boy with Deafblindness and Cerebral Palsy affecting the lower limbs, living with his parents in Banda village in Uttar Pradesh. He used to amuse himself with behaviors like waving the hands against light, nodding the head, biting himself and was vocalizing different sounds, and was in attentive to the surrounding.



Mobility



Visual Stimulation

Sony's mother helped him to brush his teeth; he was fed and never mingled with others. Sony started going to RAM school and is a hostelier. His teacher **Sri Preetamraj** (an aluminous of teacher trainees of NIEPMD) made a good individual lesson plan with much perseverance and has achieved a few of the important goals in Sony's life.

Sony's residual vision is being given more usage by way of visual stimulation. This helps him to see bright colored objects at a distance. Sony cooperates with the teacher by giving his hands for communication. The teacher takes Sony's hand, keeps it over teachers own mouth so that Sony gets movement of lips of the teacher, vibration on cheeks, and throat. This method called TADOMA is practiced with Sony everyday by the teacher.

When real objects are given to Sony, he understands the activity that the objects represent. He participates in all activities. He knows the existence of peer group. Sony is given mobility training, and now he moves from hostel to the class independently. The teacher is continuously observing him and Sony is being empowered to wards independent living.

*"Although the world is full of suffering,
it is full also of the overcoming of it"*

— Helen Keller

Chapter 5

Scheme of Assistance to Disabled persons for purchase/ fitting of Aids/Appliances (ADIP) Services

The ADIP scheme was introduced by Ministry of Social Justice & Empowerment, with an objective, to assist the needy disabled persons in procuring durable, sophisticated and scientifically manufactured aids and appliances that can promote their physical, social and psychological rehabilitation.

This scheme was carried out by NIEPMD since its inception. Subsequently this institute has been allocated the states of Tamil Nadu, Kerala, Pondicherry, Andaman & Nicobar Islands and Lakshadweep by Ministry of Social Justice & Empowerment, Govt. of India vide Letter No: 4-2(39)/09-DD-I dated 29.09.2009 for regular monitoring, inspection and guidance to grantee organization under the disability schemes of the Ministry(especially ADIP, DDRS & DDRCs). The grant in aid received under ADIP by NIEPMD, the opening balance, the expenditure, and closing balance are tabulated as follows.

Year	Opening Balance	Grant in aid received	Date of Receipt	Expenditure	Closing Balance
2007-08	NIL	3,75,72,000	28.4.07 19.12.07	2,89,09,372	86,62,628
2008-09	86,62,628	84,62,174	22.4.08 24.12.08 18.02.09	1,16,39,132	57,36,285
2009-10	57,36,285	12,50,000	6.4.09	59,16,189	12,42,271

The aids and appliances supplied under the scheme shall confirm to Bureau of Indian Standard (BIS) specifications to the extent possible. Assessment and Distribution camps were organized as per the need and requirement of the community. During the year 2009-10, 3 districts in Tamil Nadu were allotted namely, Erode, Sivagangai and Ramanathapuram vide order No:F.No4-79/06-DD-1 dated 11.12.2008. 2401 aids and appliances were provided to 1873 person with disabilities. NIEPMD had conducted camps in several places. The details are as follows:



Hon'ble Minister D.Napoleon, MoS, MSJ&E, Govt.of India distributing Aids & Appliances to the beneficiaries during distribution camp at Kangayam, Tiruppur District Tamil Nadu

National Institute for Empowerment of Persons with Multiple Disabilities

Table 9: ADIP camps conducted during the year 2009-10

Sl. No.	Location	District	State	Date	Category wise No. of Beneficiaries				Total No. of Beneficiaries
					O.H	H.H	M.H	V.I	
1.	Maduranthagam	Kancheepuram	Tamilnadu	26/7/09	23	-	-	-	23
2.	K.K.Nagar	Chennai	Tamilnadu	28/11/09	35	-	-	-	35
3.	Dindugul	Dindugul	Tamilnadu	6/10/09	188	37	124	17	366
4.	Athimenjeri	Thiruvallur	Tamilnadu	28/11/09	29	3	7	-	39
5.	Thirutani	Thiruvallur	Tamilnadu	27/12/09	27	17	-	-	44
6.	Chickmangalur	Chickmangalur	Karnataka	28/2/10	141	21	5	-	167
7.	Kangayam	Triuppur	Tamilnadu	29/3/10	38	48	156	5	247
8.	Ikkadu	Thiruvallur	Tamilnadu	19/10/09	-	-	-	35	35
9.	Poonamalle	Thiruvallur	Tamilnadu	19/10/09	-	-	-	35	35
10.	Erode	Erode	Tamilnadu	4/8/10	-	36	70	6	112
11.	Chengalpet	Chengalpet	Tamilnadu	23/6/09	-	-	8	-	8
12.	Nilgris	Nilgris	Tamilnadu	25/1/10	-	-	3	-	3
13.	NIEPMD-Centre	Chennai	Tamilnadu	01/4/09-10	653	68	-	38	759
Total					1134	230	373	136	1873

(*OH - Orthopaedic Handicapped, HH - Hearing Handicapped, MH - Mentally Handicapped, VI - Visually Handicapped)

Table 10: Details of Aids and Appliances distributed during 2009-10

Sl.No	Nomenclature	Total	Sl.No	Nomenclature	Total
01	Wheel chair	247	19	Walking stick	81
02	Tricycle	271	20	TLM	377
03	Auxiliary Crutches	179	21	Braille slate	48
04	Splints / orthosis	234	22	CD Player	3
05	Modified Shoe	54	23	Stand Magnifier	13
06	Knee pad	08	24	English plate	1
07	Rollators	47	25	Taylor's Frame	0
08	CP Chair	44	26	Walker	6
09	Hearing aid	230	27	Tetrapod	5
10	Braille watch	53	28	Artificial Limb/Calipers	8
11	Folding cane	124	29	Signature Guide	0
12	Elbow crutches	91	30	Corset	0
13	Cricket Ball	1	31	MCR Chappell	156
14	Gaiters	69	32	Shoulder swing	0
15	Cervical Collar	1	33	Geometry Set	0
16	Corner Chair	22	Total		2401
17	Prosthesis	23			
18	Standing Frame	5			

The details of fund allotted and the expenditure incurred for the same are given in Chapter 10.



Chapter 6

Research & Development

Research is a scientific and systematic search for pertinent information on a specific topic. It includes a careful investigation or inquiry specially through search for new facts in any branch of knowledge. Research is an academic activity. It consists of defining and redefining problems, formulating hypotheses or suggested solutions, collecting, organizing and evaluating data and reaching conclusion. In the field rehabilitation it is always an evidence based research that is carried out. Research and Development is one of the objectives of NIEPMD. The fund allotted for research projects during the year was Rs.26 lakhs.

The Academic committee has been formed to provide guidance for the Research projects. The details of the members committee are in the Annexure C (Page No 94). As per the guidance, the institute has undertaken 3 research projects. The details of the projects are as follows.

6.1 On going Research Project:

1. Biochemical and Neurodiagnostic Profile of Clients with Multiple Disabilities

Introduction:

The Department of PMR , NIEPMD has initiated a project to find out the underlying causes of Multiple Disabilities, through the Biochemical, Genetic and Neurodiagnostic Profiling.

Aim:

To find out the causes of Multiple Disabilities and to prevent the occurrence or deterioration of the Person with Disabilities.

Expected outcome:

The clients with metabolic disorders will be advised appropriate diet and also methods to improve skills in them and services will be provided.

Current status:

The project in its first phase has started with Biochemical testing, followed by Tandem Mass Spectrometric analysis. Results from preliminary study show slow systematic failure of organs (Kidneys, Liver, Heart, Muscles, etc) besides Multiple Disabilities, whose cause can be due to the anomalous changes in Biochemical Pathways within. The Biochemical and Tandem Mass Spectrometric analysis will be done for all the clients and the results will be analyzed and published shortly.

2. Study of sleep patterns in children with multiple disabilities and its effect in day to day functioning.

Introduction:

Clients with Multiple Disabilities are often have been problems in getting smooth sleep. The lack of sleep produces inattention, irritation and interferes with learning. Hence, study of sleep patterns and treatment of sleep disorders will help the clients to overcome the above difficulties.

Aim:

To record the sleep pattern of 50 clients with Multiple Disabilities analyze the pattern of sleep and give intervention.

Expected outcome:

The clients who are suffering due to inadequate sleep will be made to have a sound sleep and thus reducing the irritability and inattention.

Current status:

50 children with multiple disabilities and with problems with sleep have been identified. The proforma regarding assessment of sleep patterns is prepared. A Memorandum of Understanding (MoU) has been prepared and signed by Dr Ramakrishnan of the NITRA Sleep Clinic, Chennai. The Clients are being sent to clinic for sleep recording Polysomnography. Sleep pattern are studied from 9.30pm in the night till the child wakes up. 4 children have been sent for sleep analysis. The reports showed problems like non-establishment of Rapid Eye Movement sleep (REM), snoring disturbances, inadequate feeding and seizure disturbances. Children were advised accordingly by the Specialist. It was difficult to record the sleep in children with hyperactivity. The clinic has developed adaptations to record the sleep pattern in hyperactive children. This study has helped to control unwanted irritations seen in children with Multiple Disabilities. The attention span has increased, because the children could have prolonged hours of uninterrupted sleep.

3. A study on ventilatory pattern, parameters and intervention for the clients with spastic Quadriplegia cerebral palsy.

Introduction:

Patients with quadriplegia have immense changes in ventilatory pattern. There seems to be a similar motor deficit in spastic quadriplegic cerebral palsy. Hence, there arises a need to assess their ventilatory parameters and find out whether there is a respiratory compromise.

Aim:

To study the ventilatory pattern, parameters of clients with spastic quadriplegic cerebral palsy, to design an interventional protocol for the same.

Expected outcome:

Depending on the results of the study recommendations will be given in the following areas, to develop a protocol for pulmonary rehabilitation, inclusion of pulmonary rehabilitation in service models, to develop separate pulmonary rehabilitation unit for clients with multiple disabilities.

Current status:

This study was designed to be conducted in 3 phases. The first phase comprises of

1. Identifying suitable clients meeting the inclusion criteria.
2. Assessing the ventilatory parameters using computerized spirometer.
3. Comparing the value of respiratory parameters with normal subjects.
4. To find out the area of short fall and device appropriate pulmonary rehabilitation protocol.



Initially phase one is on progress, 20 clients were selected as per the selection criteria and the pulmonary parameters have been recorded. Simultaneously review of literature is also done from various journals from Tamil Nadu Dr.MGR Medical University Regional Library and other sources to support the study. The data thus collected are analyzed with data of spirometric values of normal children.

6.2 Research Papers Published during year 2009-2010

The faculty of NIEPMD is encouraged to publish evidence based research in various disciplines and to publish in peer reviewed journals . The following articles have been published during the year 2009-10

Table 11: Publications of Research Papers in Journals

S.No	Title of the paper	Name of the Journal	Name of the Faculty
1.	Holistic Teaching Practice For a Child Having Autism with Moderate Mental Retardation – Case Study	Indian Journal of Research in Education and Extension 1(2), 2009	Dr.Neeradha Chandramohan, Sri.P.Kamaraj and Sri.Kathiravan
2.	Job Satisfaction of Special Educators Teaching Children with Special Needs : A Comparative Study	Indian Journal of Research in Education and Extension 1(1), 2009	Dr.K.Balabaskar
3.	Yoga Therapy in Managing Children with Multiple Disabilities	Disabilities & Impairments 24(2), 2010	Dr.Neeradha Chandramohan & D.Barani
4	Impact of Occupational Stress on Special Educators working in Special Schools	Disabilities & Impairments 24(1), 2010	Dr.K.Balabaskar
5	The Efficacy of a comprehensive pelvic floor muscle rehabilitation program of stress Urinary Incontinence in women	Indian Journal of Occupational Therapy XLII (1), 2010	Ms.Jose Mary Sangeetha

Chapter 7

Important Events

Certain events are milestones in the history of NIEPMD. The meeting of the Central Monitoring Committee on Construction, Disability Evaluation and Certification workshop at Chennai and Orissa, and the celebration like International day of persons with disabilities, Sports meet for Children with Multiple Disabilities needs special mention.

7.1 Central Monitoring Committee on Construction:

The Central Monitoring Committee meeting on construction of new building of NIEPMD was held on 12th May 2009 under the Chairpersonship of Sri.K.M.Acharya, Secretary to GOI, MSJ &E, at NIEPMD vide letter No;8-1/2009-NIs dated 3rd April 2009. The Committee members from various Government Departments /Institutions and officials of CPWD, Chennai participated in the meeting. The following decisions were made during the meeting, to quote a few.



Shri.K.M.Acharya, I.A.S., Secretary to GOI, MSJ&E, Chairperson, Central Monitoring committee on construction of New buildings of NIEPMD, Committee Members and CPWD officials at the 1st Meeting

1. To ensure that the building is designed and constructed in the 'state of the art' .
2. To ensure the building is eco-friendly, energy efficient and aesthetic.
3. The entire campus of NIEPMD should be barrier free and to be constructed as per the universal design for usage of all persons with disabilities.
4. The new buildings of NIEPMD should have minimum maintenance requirements.
5. The application of solar energy would be made to the extent possible.
6. The building should have natural illumination, sufficient light and airflow.
7. To set up an emergency medical care unit.

7.2 State Level Workshop at Tirupati

NIEPMD organized a state Level Workshop in collaboration with Department of Adult & Continuing Education, S.V.University, Tirupathi, Andhra Pradesh on 28th & 29th April 2009. The Theme for the workshop was “Empowerment and Management of Persons with Multiple Disabilities”. The program was Inaugurated on 28th April 2009 by Prof. N.Prabakara Rao, Vice Chancellor, S.V. University, Tirupathi. The other distinguished guests were Prof.Usha Rani, Principal, S.V.College of Arts and Science, Prof.P.Adinarayan Reddy, Director, Dept.of Adult & Continuing Education (DACE), S.V.University, Tirupathi, Prof.Kumaraswamy, HOD, DACE, Mr.Prasad Rao, Asst.Director, DW department and Dr.Neeradha Chandramohan, Director, NIEPMD. The Participants were enlightened on Multiple Disabilities and management of Deafblindness. Other related issues were dealt at length.



Dignitaries during Inaugural function of State Level Workshop on “Management and Empowerment of Persons with Multiple Disabilities”

7.3 State Level Workshop for Members of the Medical Boards on Disability Evaluation and Certification (Tamil Nadu) at Chennai

NIEPMD and NIOH Jointly organized a State level workshop for members of the Medical Boards on Disability Evaluation and Certification in collaboration with Department of Health & Family Welfare, Govt.of Tamil Nadu. The program was held from 17th – 19^h August 2009 at The Residency Towers, Thiyagaraya Road, Chennai. About 130 Medical Doctors of the Medical Boards from various specialities viz., Physical Medicine & Rehabilitation, E.N.T, Ophthalmology, Orthopedics and Psychiatry from all districts of Tamil Nadu participated. The Inauguration program was held on 17th August 2009 by Thiru.V.K.Subburaj, IAS, Principal Secretary to Govt.of Tamil Nadu, Dept.of Health and Family welfare. The Valedictory function was held on 19^h August 2009. Smt.Meenakshi Rajagopal, State Commissioner for Disabled, Tamil Nadu, was the Chief Guest and Thiru.K.Pitchai, former Director, Rehabilitation for the Disabled, was the special Invitee on the Occasion.



Dignitaries during the Inaugural function of the Workshop for members of the Medical Board on "Disability Evaluation and Certification"

7.4 Regional Workshop for Specialists, of the Medical Board at Orissa

NIEPMD organized a workshop on Disability Evaluation and Certification for Doctors of Medical Boards on 4th November 2009 at Orissa. 19 Doctors and 27 members from Social Welfare office of **Orissa** participated in the program.

NIEPMD organized a two days Regional Workshop on Empowerment and Management of Persons with Multiple Disabilities on 4th and 5th November 2009. About 168 participants from Various NGOs of 5 **North eastern states** participated in the program.



Dignitaries during the Inaugural function of the workshop on Disability Evaluation and Certification for Doctors of Medical Boards at Orissa

7.5. Commencement of Construction of New Building of NIEPMD

The construction of New Buildings of NIEPMD began with Boomi Pooja was organized on 28th October 2009. It was performed in the presence of Dr.Neeradha Chandramohan, Director, Sri.Padmanaban, Chief Engineer, CPWD, Sri. Manickavasagam, Superintendent Engineer, and Sri.Selvaraj, Executive Engineer and other officials from CPWD and NIEPMD.



Dr.Neeradha Chandramohan, Director, NIEPMD and CPWD officials during the Boomi Pooja for commencement of Construction works

7.6. International Day of Persons with Disabilities

NIEPMD celebrated the International Day of Persons with Disabilities on 3rd December 2009. In this connection various sports events and cultural programs were organized by persons with disabilities and their parents. The Comedian Actor Shri.Thamu, presented mimicry and entertained the audience.



Children with Multiple Disabilities performing dance during International day of Persons with Disabilities

7.7. Sports Meet for Children with Multiple Disabilities

NIEPMD and Department of Social work, Loyola College, Chennai jointly organized the Sports Meet for children with Multiple Disabilities on 2nd February 2010 at NIEPMD campus. About 137 children from Various NGO's Viz Meston Educational & Rehabilitation centre, Little Hearts Special School, Mehatva Special School, Kalpakkam, and Paradise Home participated. Smt.Shakunthala Sharma, Secretary, Childrens' Garden School, Mylapore, Chennai was the Chief Guest and declared the sports meet open. Dr.Tomy, Officiating Director/HOD, PMR, NIEPMD presided over the function. Mr.M.R.Arul Raj, HOD, Department of Social Work, Loyola College, Chennai distributed the prizes to winners.



Inaugural ceremony of Sports meet for Children with Multiple Disabilities



A Person with Multiple Disabilities participates in Bocce game.

7.8. Visit by Ministers

The Hon'ble Union Minister Mukul Wasnik, Ministry of Social Justice & Empowerment, Govt.of India visited NIEPMD on 13th February 2010 and reviewed the activities and services provided for persons with Multiple Disabilities. The Hon'ble Minister also took part in the various welfare activities. Viz. distribution of aids and appliances to the beneficiaries. As a memory of his visit, he planted saplings in the campus premises.



Hon'ble Minister Shri. Mukul Wasnik arrives at the Campus flanked by Dr.Neeradha Chandramohan, Director, NIEPMD



Hon'ble Minister Shri. Mukul Wasnik distributing Aids & Appliances to the beneficiaries.

The Hon'ble Minister Shri.D.Napoleon, MoS, Ministry of Social Justice & Empowerment, Govt.of India visited NIEPMD on 18th March 2009 to review the Progress of the construction of the new Building of NIEPMD. The officials of Central Public Works Department, Chennai explained about the progress of the construction of the proposed building in detail. The Minister gave some valuable suggestions to them for incorporating in the building plans of the new building and also interacted with parents of persons with multiple disabilities to find out their problems and redress their grievances.



Hon'ble Minister Shri.D.Napoleon briefed by CPWD officials at the construction site of New Building, NIEPMD

Chapter 8

Other Activities

NIEPMD participated in Exhibition cum awareness programs organized by various Government organizations and other establishments. The details are as follows.

8.1 Participation in Education Fair

NIEPMD participated in the **Education fair** organized by Satyam Career and Educational Consultants, Abohar (Punjab) at Bhatinda during 4th and 5th July 2009. The various Universities and Educational Institutions participated in the exhibition. The Handout about the course details has been distributed to the visitors and briefed about the courses and services offered by NIEPMD.



Hon'ble Minister Shri.D.Napoleon during the Inauguration of Bharat Nirman Public Information Campaign Exhibition at Perambalur



Exhibition at Bharat Nirman Public Information Campaign, Kundrathur, Chennai



Education Fair at Bhatinda, Punjab



Exhibition at Wipro, Bangalore.

8.2 Bharat Nirman Public Information campaign

NIEPMD put up stall at Bharat Nirman Public Information Campaign organized by Press Information Bureau (Ministry of Information & Broadcasting), Chennai at various districts of Tamil Nadu along with other representatives from state and central government for dissemination of information of their activities.

District	Date
Arakkonam, Tamil Nadu	26 ^h – 30 th July 2009
Chidambaram, Tamil Nadu	05 ^h -09 th September 2009
Kancheepuram, Tamil Nadu	17 ^h – 21 st November 2009
Perambalur, Tamilnadu	12 ^h -16 th December 2009
Kovilpatti, Tamil Nadu	29 ^h Jan-2 nd Feb 2010

The Exhibitors from Central and State Government Departments were participated in the exhibition. The visitors were explained about various activities and services of NIEPMD. The materials used for rehabilitation and aids & appliances for persons with Disabilities has also been displayed during the exhibition.

8.3 Handicraft Exhibition

The Institute participated in the Exhibition organized by Wipro Private Ltd at Wipro Electronic City Campus, Bangalore from 3rd – 4th September 2009. NIEPMD displayed the various materials made by Special Employees (person with Special needs) of Department of Adult Independent Living, viz. Plastic flower garland, pen stand, ice stick tray, Frock, tops mat wall hanging etc. There was a positive response from the visitors.

Chapter 9

Administration

The Administrative Wing comprises of various sections viz., Administration/ Establishment, Estates & Maintenance, Accounts, Stores & Purchase, Academic & Training and Library & Information section. It plays a vital role in the effective functioning of the institute. All matters pertaining to administration, personnel, vigilance, implementation of various GOI Policies, rules and regulations, guidelines, purchase, logistics, tendering academic program activities, budget and financial management, estates, dissemination of information, media publicity, RTI, implementation of official language, etc., are dealt within these sections of the Administrative Wing.

9.1. Staffing:-

The details of sanctioned regular posts and posts filled during the period of report i.e. financial year 2009-10 are as under:-

9.1.1 Details of Sanctioned Strength: NIEPMD

Total No. of Posts sanctioned	:	71 Posts (Cleared by GOI/EFC)
No. of posts created in Phase-I	:	32 Posts
No. of posts in Phase – II	:	39 Posts (Sanctioned - Case taken up for its creation.)

Group -A

Director	=	01
Deputy Registrar (Administration)	=	01
Associate Professor	=	06
Accounts Officer	=	01
Lecturers	=	06
Information & Media Officer	=	01

Group – B

Rehabilitation Officer	=	06
Program Assistant	=	06
Special Education Teacher	=	04

Total	=	32 Posts
--------------	---	-----------------



Table 12: Details of Posts held and vacant in Phase – I (till 31st March 2010)

S. No	Name of the Post	Sanctioned	Held	Vacant
1.	Director	01	01	00
2.	Deputy Registrar (Admn.)	01	00	01
3.	Associate Professor	06	03	03
4.	Accounts Officer	01	00	01
5.	Lecturer	06	06	00
6.	Info. & Media Officer	01	01	00
7.	Rehabilitation Officer	06	06	00
8.	Program Assistant	06	06	00
9.	Spl. Education Teacher	04	04	00
Total		32	27	05

- Note: (i) One Post of Group – D (Peon) has been transferred along with the post from NIHH, Mumbai
(ii) No regular post was filled during the period of report 2009-10.

*"Never bend your head.
Hold it high.
Look the world straight in the eye."*

— Helen Keller

9.1.2. Construction of buildings: -

The Govt. of Tamil Nadu has allotted 15.22 acres of land on East Coast Road, Muttukadu along with the existing buildings, which were suitably renovated through CPWD, Chennai to start the service and program activities and family cottage services to the Persons with Multiple Disabilities. The following new buildings are being constructed through CPWD, Chennai for NIEPMD with the total area of 12331 Sq. mtrs. The details are as follows.

Table 13: Total abstract of the building

SL NO.	SUB - HEAD	Total Cost	Area (sq.mtrs)
1	<u>Services . Program Block and Administrative Block</u> (Four storied)	194596279	6868
2	<u>Special Education centre</u> (Single - Storied)	30494637	1080
3	<u>Mens Hostel</u> (Three Storied) In-mate Capacity 3 -bedded Room - 13 x 3 = 39 Students 2-bedded Room - 06 x 2 = 12 Students Total Capacity = 51 Students	19026866	933
4	<u>Womens Hostel</u> (Four Storied) In-mate Capacity 3 -bedded Room - 18 x 3 = 54 Students 2-bedded Room - 12 x 2 = 24 Students Total Capacity = 78 Students	26692766	1309
5	<u>Kitchen and Dining hall</u> (Single - Storied) Kitchen cum Pantry - 1 Boys Dining Hall - 50 students capacity Girls Dining Hall - 80 Students	10703899	360
6	<u>Guest House</u> (Two Storied)	14177114	641
7	<u>Staff Quarters</u> (Three - Storied) Director's Residence -V - 01 Staff Quarters Type -IV - 06 Staff Quarters Type -III - 06	23444384	1140
8	<u>Development works - Civil</u>	24300500	
9	<u>Development works - Electrical</u>	17774469	
	Total	361210914	
	Add for contingencies @ 3%	10836327	
	TOTAL	372047241	
	Add Labour Welfare Cess @ 0.30%	1116142	
	Add VAT @ 2%	7440945	
	Service Tax @ 2 %	7440945	
	GRAND TOTAL	388045273	12331

Table 14: Work Progress as on 31st March 2010 Construction of Building for NIEPMD

Sl. No.	Type of building	Progress of the works
1	Services, Programmed Block and Administrative Block	Rear block – foundation P.C.C completed Front block – foundation work up to plinth
2	Special Education Centre	Roof centering works started
3	Men’s Hostel	Columns raised up to floor level
4	Women’s Hostel	Foundation R.C.C works 90% completed
5	Kitchen and Dining Hall	Columns raised up to floor level
6	Guest House	Roof centering and reinforcement works under progress
7	Staff Quarters	Type V –external plastering started Type III & IV foundation P.C.C completed
8	Development Works – Civil	Road works First Layer W.B.M completed
9	Development Works - Electrical	Sub Station Building completed



9.1.3. Library & Information Service

The Library during the year continued to march to its mission of facilitating the creation of new knowledge through the acquisition, organization and dissemination of library materials. It offered a range of services including reference, membership, circulation, document delivery and information alert services. The collection of books and journals is an important function of the library that supports academic and research work of the faculty, staff and other users. Library collection comprises of books, journals, theses, reports, pamphlets and other reading materials. All the newly acquired documents have been classified, catalogued and kept ready for use. A list of new additions of books and journals issues are being circulated to all the departments at regular intervals.



Trainees refer Books at Library

During the year the new additions were 235 Books, 353 News paper clippings and 3 magazines, 7 News papers have been subscribed. The Institute had participated in the Exhibition cum Awareness Programs organized by Government as well as private firms. The Institute's Annual Report 2008-09 and 'Empower' News letter – an in house publication had been circulated for wide publicity. The total number of Books and Journals as on March 2010 are as follows.

Table 15: Total stock as on 31st March 2010

Sl. No	Collection	Added during 2009-10	Total as on 31 st March 2010
01	Books	235	960
02	Journals	--	19
03	Newspaper Clippings	353	960
04	Back Volumes	29	29



9.1.4. Information Technology initiatives

To enter into the computer era, lot of steps have been taken by NIEPMD. The institute plans to do the following in the days to come.

1. Designing of disabled friendly Website
2. E-service books
3. Service data to be digitalized
4. IT equipments for all department

9.1.5. Implementation of Right to Information Act

The Right to Information Act 2005 (Act No.22/2005)[1] is a law enacted by the Parliament of India giving citizens of India to access to Government records and information.

During the year 2009-10, under the RTI Act 2005, the Institute has received **14** applications, seeking information on various activities and issues related to Transfer Policy, Accounts, Job Reservation, Pay Rules and Grant in Aid. **All the queries had been clarified through replies and sent to the applicants.**

9.1.6. Implementation of Official Language

The institute has been striving to achieve the targets set in the Annual Program 2007-08 of Ministry of Home Affairs, Government of India, for transacting the official work of the Union in Hindi. As per Section 3(3) of the Official Languages Act all the required documents were issued both in Hindi & English. The letters received in Hindi were replied in Hindi only. Institute's monthly report letter had been sent in Hindi and also the question papers pertaining to various examinations were prepared in bilingual and the students were given option to write the examination in Hindi. The details of the Hindi correspondence during the year 2009-10 are as follows.

No. of letters received in Hindi	:	10
No. of letters prepared & sent in Hindi	:	17

9.1.7. Implementation of various other Government orders of Government of India:

Adhering to the letter from the Department of Expenditure, Ministry of Finance, Govt. of India, vide O.M. dated 7th September 2009, various measures were implemented to cut down the extra or unnecessary expenditures made (if at all) pertaining to the overall functioning of the institute.

As per the standing instructions of the Ministry of Home Affairs, Government of India, 30^h January of every year is observed as **Martyr's day**, for **paying respect to those who gave their lives in the struggle of Indian Freedom**. As part of this, all the staff members and students / trainees, on the specified date, observed two minutes silence to pay homage for the departed souls.

The institute observed **Sadbhavna Diwas** by taking an oath on 20th August 2009, marking the birth anniversary of Late Prime Minister of India, Shri. Rajiv Gandhi, to promote National Integration and Communal Harmony, adhering to the letter from the Ministry of Youth Affairs and Sports, Government of India, vide O. M. dated 11th July 2008.

As per the Instruction of Ministry of Personnel, Public Grievances and Pensions, Govt. of India, DOPT OM No.11013/3/2009-Estt.(A) dated 21st July 2009, NIEPMD constituted a committee to prevent the sexual harassment of working women in our office, as per the rule 3 of CCS (Conduct) rules, 1964. No such cases have been reported during the year of report.

9.1.8. Vigilance cases:

During the period of report no disciplinary/ vigilance cases were initiated or pending at NIEPMD

9.1.9. Filling up of identified back log post reserved for SC/ST, OBC and PwDs:

In pursuance to GOI instructions to fill up the identified back log vacancies in respect of SC/ST/OBC and Persons with Disabilities, by conducting Special Recruitment drive, Ministry of Social Justice & Empowerment vide their letter No:D.O.No:27-02/2008-Cdn dated 7th May 2010 had instructed NIEPMD to submit their annual direct recruitment plan, to take necessary action to fill up the backlog vacancies and to submit detailed progress report in this regard. However it is submitted that NIEPMD established in the year 2005 and out of 71 posts sanctioned by GOI/EFC, only 32 posts have been created in Phase – I and that the recruitment action for filling up the sanctioned posts were taken up only after March 2007, there is no back log vacancy identified to be filled up for SC/ST/PwDs/OBC.

*“When one door of happiness closes, another opens;
but often we look so long at the closed door that we do not
see the one which has been opened for us”*

— Helen Keller



Chapter 10

Audit Reports & Annual Accounts

In terms of Section 20(1) of C&AG's (DPC) Act, 1971, the CAG, New Delhi had entrusted audit of Annual Accounts of NIEPMD for a period of 5 years from financial year **2006-2011** to the Principal Accountant General (Civil Audit) (PAG), Tamil Nadu and Puducherry, Chennai. Accordingly, the PAG, Chennai is auditing the annual accounts of NIEPMD.

For the financial year 2009-10, the audited statement of accounts comprising of accounts statement, balance sheet, income & expenditure statement and receipts and payment details which were verified by the Internal Auditor was submitted to the PAG. The audit team was deputed by the Principal Account General visited NIEPMD for audit from 29th June – 9th July 2010. The audit report, audit certificate and certified accounts of the institute for the financial year 2009-10 were received from the PAG vide letter No: CAB/I/28-057/2010-11/94, dated 19th October 2010. The summary of accounts and audit report are given below :-

Summary of Accounts Statements for the year 2009-10

Details of NIEPMD – Main Account: Plan Grants-in-aid

		Rs.in crores
1	Closing Balance of Rs.0.44 crores for the f/y 2008-09, was taken as opening balance for the f/y 2009-10	0.44
2	Grants-in-aid received under plan head during the year 2009-10 from Ministry of Social Justice & Empowerment, New Delhi	9.00
3	Receipts of Tuition fees, Registration fees, Guest house charges and application fees for the year 2009-10	0.15
	Total	9.59
4	Less: Recurring & Non-recurring expenses for the year 2009-10	9.16
	Salaries	1.62
	Administrative Expenses	0.56
	Programmes & Services (HRD)	0.44
	Capital Assets	0.04
	Advance to CPWD	6.50
	Balance	0.43
	Closing Balance as on 31-03-2010	0.43

Details of NIEPMD – ADIP Account: ADIP Scheme Grants-in-aid

		Rs.in crores
1	Closing Balance of Rs.0.57 crores for the f/y 2008-09, was taken as opening balance for the f/y 2009-10	0.57
2	Grants-in-aid received under ADIP Scheme during the year 2009-10 from Ministry of Social Justice & Empowerment, New Delhi on 06.04.09	0.12
3	Receipts of Savings Bank interest for the year 2009-10	0.02
	Total	0.71
4	Less: Recurring expenses towards cost of Aids & Appliances, Assessment and Distribution camp expenses for the year 2009-10 Aids & Appliances for VI	0.01
	Aids & Appliances for OH	0.48
	Aids & Appliances for MR	0.05
	Aids & Appliances for HH	0.01
	ADIP Distribution Expenses	0.04
		0.59
	Closing Balance as on 31-03-2010	0.12



कार्यालय प्रधान महालेखाकार (सिविल लेखापरीक्षा)

तमिलनाडु एवं पुदुचेरी

लेखा परीक्षा भवन

361, अण्णा सालै, तेनामपेट, चेन्नै - 600 018

**OFFICE OF THE PRINCIPAL
ACCOUNTANT GENERAL (CIVIL AUDIT)**

Tamil Nadu & Puducherry,
"LEKHA PARIKSHA BHAVAN"

361, Anna Salai, Teynampet, Chennai - 600 018.



By SPEED POST

CAB/I/28-057/2010-11/94

Dated: 19-10-2010

To

**The Secretary,
Ministry of Social Justice and Empowerment,
Room No. 613 'A' Wing,
Shastri Bhavan,
New Delhi - 110 001.**

Sir,

**Sub: Audit Report on the accounts of National Institute for
Empowerment of Persons with Multiple Disabilities,
Muttukadu, Chennai for the year 2009-10.**

I am to forward herewith the Separate Audit Report on the accounts of National Institute for Empowerment of Persons with Multiple Disabilities, Muttukadu, Chennai for the year 2009-10 along with the statement of accounts for the year 2009-10.

Three copies of the Report for the year 2009-10 as presented to Parliament may also be sent in due course.

The receipt of this letter with enclosures may kindly be acknowledged.

Yours faithfully,

(Sd)...

Senior Deputy Accountant General / ISC II

Contd...

दूरभाष / Phone : 2431 6400, 2431 6401, 2431 6402
2431 6403, 2431 6404, 243

तार / Telegram : "AUDITONE" Chennai

फैक्स / Fax : 044 - 2433 0012

तार / E-mail : pagciviltnp@bsnl.in

Endt.No.: CAB/I/28-057/2010-11/ 95

Dated:19-10-2010

Copy together with a copy of the certified accounts, copy of the Audit Report forwarded to the Director, National Institute for Empowerment of Persons with Multiple Disabilities, Muttukadu, Chennai 603 112. She is requested to furnish 3 copies of the Hindi version of the Audit Report and 3 copies of the Annual Report at an early date.

She is also requested to furnish the dates of presentation of the accounts to Parliament for the year 2009-10.


19/10/10

Senior Deputy Accountant General / ISC II



**Separate Audit Report of the Comptroller & Auditor General of India on the
Accounts of National Institute for the Empowerment of Persons With Multiple
Disabilities, Muttukadu, Chennai for the year ended 31 March 2010**

We have audited the attached Balance Sheet of National Institute for the Empowerment of Persons with Multiple Disabilities, Muttukadu, Chennai as at 31 March 2010 and the Income & Expenditure Account /Receipts & Payment Account for the year ended on that date under Section 20(1) of the Comptroller & Auditor General's (Duties, Powers & Conditions of Service) Act, 1971. The audit has been entrusted for the period upto 2010-2011. These financial statements are the responsibility of the Institute's management. Our responsibility is to express an opinion on these financial statements based on our audit.

2 This Separate Audit Report contains the comments of the Comptroller & Auditor General of India (CAG) on the accounting treatment only with regard to classification, conformity with the best accounting practices, accounting standards and disclosure norms, etc. Audit observations on financial transactions with regard to compliance with the Law, Rules & Regulations (Propriety and Regularity) and efficiency-cum-performance aspects, etc., if any are reported through Inspection Report/CAG's Audit Reports separately.

3 We have conducted our audit in accordance with auditing standards generally accepted in India. These standards require that we plan and perform the audit to obtain reasonable assurance about whether the financial statements are free from material misstatements. An audit includes examining, on a test basis, evidences supporting the amounts and disclosure in the financial statements. An audit also includes assessing the accounting principles used and significant estimates made by management, as well as evaluating the overall presentation of financial statements. We believe that our audit provides a reasonable basis for our opinion.

4 Based on our audit, we report that:

- i We have obtained all the information and explanations, which to the best of our knowledge and belief were necessary for the purpose of our audit.
- ii The Balance Sheet and Income & Expenditure Account/Receipt & Payment Account dealt with by this report have been drawn up in the format approved by the Ministry of Finance.
- iii In our opinion, proper books of accounts and other relevant records have been maintained by the National Institute for Empowerment of Persons with Multiple Disabilities, Muttukadu, Chennai as required in the rules and regulations of the Institute in so far as it appears from our examination of such books.
- iv We further report that:

A General

1. Plan funds received for a specific purpose are to be shown as separate funds and not to be mixed up with any other funds. The Institute had not segregated the Plan Funds received towards incurring recurring and non-recurring expenditure. Grant received towards non recurring expenditure is accounted for under Income and Expenditure account which resulted in overstatement of surplus and overstatement of the Corpus fund. Interest earned is taken as income of the Institute instead of treating it as additions to Plan Funds (Non Recurring)

2. The accounts of National Institute for the Empowerment of Persons with Multiple Disabilities, Muttukadu, Chennai were revised based on draft Audit observations and the revision in accounts resulted in the following:

Balance Sheet:	
Increase in Current Assets	₹ 52,65,686
Income and Expenditure Account	
Increase in Income	₹49,86,930
Decrease in Expenditure	₹ 2,78,756
Receipts and Payments	Receipts: ₹ 23,14,01,602
Increase in Receipts and Payments	Payments: ₹ 23,09,76,452

B Grants-in-aid

Out of the grants-in-aid of ₹.9.13 crore (Plan: ₹ 9,12,50,000/-) (NIEPMD Account: ₹ 9.00 crore and ADIP A/c ₹ 0.13 crore) received during the year 2009-10, and ₹ 1.02 crore (NIEPMD Account ₹ 0.45 crore and ADIP a/c: ₹ 0.57 crore) being unspent balance of the previous year and ₹ 0.16 crore being the income from internal resources the Institute could utilize a sum of ₹ 9.75 crore (Plan: 9.75 crore) (NIEPMD A/c ₹ 9.16 crore and ADIP A/c ₹ 0.59 crore) leaving a balance of ₹ 0.56 crore as at 31st March 2010.

- v Subject to our observations in the preceding paragraphs, we report that the Balance Sheet and Income & Expenditure Account/Receipt & Payment Account dealt with by this report are in agreement with the books of accounts.
- vi In our opinion and to the best of our information and according to the explanations given to us, the said financial statements read together with the Accounting Policies and Notes on Accounts, and subject to the significant matters stated above and other matters mentioned in Annexure to this Audit Report give a true and fair view in conformity with accounting principles generally accepted in India.
- a. In so far as it relates to the Balance Sheet, of the state of affairs of the National Institute for the Empowerment of Persons with Multiple Disabilities, Muttukadu, Chennai as at 31 March 2010; and
- b. In so far as it relates to Income & Expenditure Account of the surplus for the year ended on that date.

For and on behalf of the C&AG of India

K. V. S. S. S.

Principal Accountant General (Civil Audit)
Tamil Nadu and Puducherry

Place : Chennai
Date : 19.10.2010



Annexure to Separate Audit Report

1 Adequacy of Internal Audit System:

The Institute has an internal audit system commensurate with its size and nature.

2 Adequacy of Internal Control System:

There is an adequate internal control system..

3 Physical verification of fixed assets:

Physical verification of fixed assets is done at reasonable intervals.

4 Regularity in payment of statutory dues:

The Institute is regular in depositing Income Tax and Service Tax with the appropriate authorities.


19/10/10
Audit Officer

Grant-in-Aid

(Refer comment no. iv B of the SAR)

Projectwise details of Receipt and utilization of Grant-in-Aid during the year is given below:-

In ₹

Sl. No.	Name of the Project for which grants received or General Grants	Amount of Grant brought forward from previous year	Amount of grant received during the year	Total Grant received	Amount utilized during year	Amount unutilized as on 31.03.2010 carried forward to next year	Remarks i. Target date of the Project ii. Audit comment on delay etc.
1	NIEPMD, Chennai	44,46,154	9,00,00,000	9,59,52,530	9,16,40,146	43,12,384	-
	Internal Receipts		15,06,376				-
2	ADIP Scheme	57,36,285	12,50,000	71,58,460	59,16,189	12,42,271	-
	Internal Receipts		1,72,175				-


19/10/10
Audit Officer



Grams: NIEPMD
E-mail: niepmd@gmail.com

Telefax : 044 – 27472389
Telephone Nos.2747 2104, 2747 2113, 2747 2046

**NATIONAL INSTITUTE FOR EMPOWERMENT OF PERSONS
WITH MULTIPLE DISABILITIES (NIEPMD)**
(Govt. of India, Ministry of Social Justice & Empowerment)
East Coast Road, Muttukadu, Kovalam Post, Chennai - 603 112, Tamilnadu.

<u>Index for Form of Financial Statement as on 31-03-2010</u>		
Sl. No.	Particulars	Page No.
1.	Balance Sheet as at 31-03-2010	1
2.	Income & Expenditure Statement for the period ending 31-03-2010	2
3.	Receipts & payments Accounts for the period ending 31-03-2010	3
4.	Schedule 1 & 2	4
5.	Schedule 3	5
6.	Schedule 4	6
7.	Schedule 5 & 6	7
8.	Schedule 7	8
9.	Schedule 8	9
10.	Schedule 9 & 10	10
11.	Schedule 11	11 – 12
12.	Schedule 12 & 13	13
13.	Schedule 14 & 15	14
14.	Schedule 16 & 17	15
15.	Schedule 18 & 19	16
16.	Schedule 20, 20-A & 20 –B	17
17.	Schedule 21	18
18.	Schedule 22 & 23	19
19.	Schedule 24	20 - 22
20.	Schedule 25	23
21.	Annexure I – IV	24 -27

National Institute for Empowerment of Persons with Multiple Disabilities

FORM OF FINANCIAL STATEMENTS (NON-PROFIT ORGANISATIONS)

Name of Entity: National Institute for Empowerment of Persons with Multiple Disabilities, Muttukadu
BALANCE SHEET AS AT 31st MARCH, 2010

		(Amount in Rs.)	
<u>CORPUS/CAPITAL FUND AND LIABILITIES</u>	Schedule	Current Year	Previous Year
CORPUS/CAPITAL FUND	1	289662047	218082344
RESERVES AND SURPLUS	2	0	0
EARMARKED/ENDOWMENT FUNDS	3	0	0
SECURED LOANS AND BORROWINGS	4	0	0
UNSECURED LOANS AND BORROWINGS	5	0	0
DEFERRED CREDIT LIABILITIES	6	0	0
CURRENT LIABILITIES AND PROVISIONS	7	10410837	11947389
TOTAL		300072884	230029733
<u>ASSETS</u>			
FIXED ASSETS	8	18190127	18873866
ADD: PRIOR PERIOD ADJUSTMENTS IN ASSETS		0	0
INVESTMENTS-FROM EARMARKED/ENDOWMENT FUNDS	9	0	0
INVESTMENTS-OTHERS	10	0	0
CURRENT ASSETS, LOANS, ADVANCES ETC.	11	281882757	211155867
MISCELLANEOUS EXPENDITURE (to the extent not written off or adjusted)		0	0
TOTAL		300072884	230029733
SIGNIFICANT ACCOUNTING POLICIES	24		
CONTINGENT LIABILITIES AND NOTES ON ACCOUNTS	25		


 P.A.(Actts)


 DIRECTOR

FORM OF FINANCIAL STATEMENTS (NON-PROFIT ORGANISATIONS)
Name of Entity: National Institute for Empowerment of Persons with Multiple Disabilities, Muttukadu
INCOME AND EXPENDITURE ACCOUNT FOR THE PERIOD ENDED 31ST MARCH, 2010

(Amount in Rs.)

INCOME	Schedule	Current Year	Previous Year
Income from Sales/Services	12	0	0
Grants/Subsidies	13	90822189	103030750
Fees/Subscriptions	14	677388	376950
Income from Investments (Income on Invest. From earmarked/ endow. Funds transferred to Funds)	15	0	0
Income from Royalty, Publication etc.	16	0	0
Interest Earned	17	7915381	5740842
Other Income	18	210468	50967
Increase/(decrease) in stock of Finished goods and works-in-progress	19	0	0
TOTAL (A)		99625426	109199509
EXPENDITURE			
Expenditure on Program & Services	20	4323663	4911064
Establishment Expenses	20A	16144547	12103001
Other Program Expenditure	20B	5916189	11639132
Other Administrative Expenses etc.	21	5605369	4839746
Expenditure on Grants, Subsidies etc.	22	0	0
Interest	23	0	0
Depreciation (Net Total at the year-end - corresponding to Schedule 8)		1111550	1341903
TOTAL (B)		33101318	34834846
Balance being excess of Income over Expenditure (A-B)			
Transfer to Special Reserve (Specify each)			
Transfer to/from General Reserve			
BALANCE BEING SURPLUS/(DEFICIT)		66524108	743664663
CARRIED TO CORPUS/CAPITAL FUND			
SIGNIFICANT ACCOUNTING POLICIES	24		
CONTINGENT LIABILITIES AND NOTES ON ACCOUNTS	25		

P. A. (Actts)

DIRECTOR



National Institute for Empowerment of Persons with Multiple Disabilities

National Institute for Empowerment of Persons with Multiple Disabilities, Muttukadu, Chennai. RECEIPTS AND PAYMENTS ACCOUNT FOR 2009-10

Sl.No.	Receipts	2008-09	2009-10	Sl.No	Payments	2008-09	2009-10
1	Opening balance						
2	NIEPMD Main a/c	5053186	4446154	1	Salaries & Wages	12103001	16144547
3	NIEPMD ADIP a/c	8662628	5736285	2	Administrative Expenses	4839746	5478333
4	Grants-in-aid (NIEPMD a/c)	97700000	90000000	3	Expenditure on Programme & Services	4911064	4323663
5	Grants-in-aid (ADIP a/c)	8462174	1250000	4	Expenditure on ADIP Scheme	11639132	5916189
6	Tuition Fees	117000	338443	5	Loans & Advances paid to staff		
7	Examination Fees	83200	71700		Motor Cycle Advance	240000	0
8	Donation	3231	0		Computer Advance	180000	120000
9	Sale of News Paper	1551	7113		Festival Advance	3000	21000
10	Loans & Advances Recoveries				LTC Advance	0	4717
11	T.A. Advance	0	19400		Flood Advance	55000	0
12	Flood Advance	2200	26400		Medical Advance	0	45000
13	Temp.Advance of Dr.Vijalakshmi	0	0		Caution Deposit for E.B.	0	40770
14	Motor Cycle Advance	100100	113600	6	T.A. Advance	19400	58700
15	Computer Advance	47500	86000	7	Capital Section (Fixed Assets)	1930871	427811
16	LTC Advance	10000	0	8	Advances with CPWD	0	65000000
17	Festival Advance	4200	8100	9	Receipts of CRC Bhopal	74823	0
18	Advance Received from CPWD	98847	0	10	Amount deposited on term deposit	0	230976452
19	Sale of Scraps	0	126000		Term Deposit with Indian Bank.	75000000	0
20	Registration & Application fees	169000	236195		Savings Bank account with Indian Bank	4446154	4312384
21	Sale of Study Materials/ Tender forms	3600	8600		Savings Bank account - ADIP Scheme	5736285	1242271
22	Guest House Receipts	23160	33675		New Pension - RIP Deposit and RD A/c	1030630	4036350
23	Receipts of User charges	0	12880		Savings Bank account - NIEPMD - GPF	75856	478582
24	Training Fees	7750	31050	11	Advance to India Book House for supply of International Journals.	0	265792
25	Security Deposit	55600	105900				
26	Service Graduity	31644	8106				
27	Interest on SB a/c - Main a/c	259065	111751				
28	Interest on SB a/c -ADIP a/c	250615	172175				
29	Interest on Loans	2800	4300				
30	Receipts for NPS Contribution	1030630	4036350				
31	Imprest a/c of Sh Srinivasan Babu, PA	10000	0				
33	Receipts of GPF	75856	478582				
34	Course fee & festival Advance from NIMH	0	0				
35	Hostel Maintenance Charges	19425	22200				
36	Term Deposit maturity & Interest Received and Reinvested	0	231401602				
	Total	122284962	338892561		Total	122284962	338892561

[Signature]
P.A.(Actts)

[Signature]
DIRECTOR

FORM OF FINANCIAL STATEMENTS (NON-PROFIT ORGANISATIONS)
Name of Entity: National Institute for Empowerment with Persons with Multiple Disabilities, Muttukadu
SCHEDULES FORMING PART OF BALANCE SHEET AS AT 31ST MARCH, 2010

(Amount in Rs.)

	Current year		Previous Year	
<u>SCHEDULE 1 - CORPUS/CAPITAL FUND:</u>				
Balance as at the beginning of the year		218082344		150768696
Add: Unspent Grant balance as on 31.03.2010 in NIEPMD - Main a/c = 4446154				
: Unspent Grant Balance as on 31.03.2010 in ADIP a/c = 5736285		10182439		150768696
Less: Adjustment of previous year grants, as the fixed assets are deleted from Schedule-8 (transfer to other organizations)		228264783		150768696
Add: Capital Expenditure for purchase of Assets		427811		3131424
Add/(Deduct): Balance of net income/(expenditure) transferred from the (Add) Income and Expenditure Account		66524108		74364663
Less: Unspent grant-Balance as on 31-03-2010 in NIEPMD Main = 4312384				
Less: Unspent grant-Balance as on 31-03-2010 in NIEPMD ADIP = 1242271		-5554655		-10182439
<u>BALANCE AS AT THE YEAR-END</u>		289662047		218082344
		Current year		Previous Year
<u>SCHEDULE 2 - RESERVES AND SURPLUS</u>				
1. <u>Capital Reserve:</u>				
Addition during the year				0
Less: Deductions during the year		0		
2. <u>Revaluation Reserve:</u>				
As per last Account				0
Addition during the year				
Less: Deductions during the year		0		
3. <u>Special Reserves:</u>				
As per last Account				0
Addition during the year				
Less: Deductions during the year		0		
4. <u>General Reserve:</u>				
As per last Account				0
Addition during the year				
Less: Deductions during the year		0		
<u>TOTAL</u>		NIL	NIL	NIL

FORM OF FINANCIAL STATEMENTS (NON-PROFIT ORGANISATIONS)
Name of Entity: National Institute for Empowerment of Persons with Multiple Disabilities, Muttukadu
SCHEDULE 3 - EARMARKED/ENDOWMENT FUNDS

	FUND-WISE BREAK UP				TOTALS	
	Fund WW	Fund XX	Fund YY	Fund ZZ	Current Year	Previous Year
	(Amount in Rs.)					
SCHEDULE 3 - EARMARKED/ENDOWMENT FUNDS						
a) Opening balance of the funds					10182439	0
b) Additions to the Funds:					91250000	0
i. Grants-in-aid					0	0
ii. Income from investments made on account of funds					0	0
iii. Other additions (specify nature) (Tutions Fees, Guest house Receipts, Recoveries of Advances)					1678551	0
TOTAL (a+b)	NIL	NIL	NIL	NIL	103110990	NIL
C. Utilisation / Expenditure towards objectives of funds						
I. Capital Expenditure					693603	0
- Fixed Assets					0	0
- Others					0	0
Total					693603	0
ii. Revenue Expenditure					16144547	0
- Salaries, Wages and allowances etc.					0	0
- Rent					6500000	0
- Advances with CPWD					15718185	0
- Other Administrative Expenses					0	0
Total					96862732	0
TOTAL (c)	NIL	NIL	NIL	NIL	97556335	NIL
NET BALANCE AS AT THE YEAR-END (a + b - c)	NIL	NIL	NIL	NIL	5554655	NIL

Notes

- 1) Disclosures shall be made under relevant heads based on conditions attaching to the grants
- 2) Plan Funds received from the Central/State Governments are to be shown as separate Funds and not to be mixed up with any other Funds

FORM OF FINANCIAL STATEMENTS (NON-PROFIT ORGANISATIONS)
Name of Entity: National Institute for Empowerment of Persons with Multiple Disabilities, Muttukadu
SCHEDULES FORMING PART OF BALANCE SHEET AS AT 31ST MARCH, 2010

(Amount in Rs.)

	Current Year		Previous Year	
<u>SCHEDULE 4 - SECURED LOANS AND BORROWINGS:</u>				
1. Central Government			0	0
2. State Government (Specify)			0	0
3. Financial Institutions			0	0
a) Term Loans			0	0
b) Interest accrued and due			0	0
4. Banks:			0	0
a) Term Loans			0	0
- Interest accrued and due			0	0
b) Other Loans (specify)			0	0
- Interest accrued and due			0	0
5. Other Institutions and Agencies			0	0
6. Debentures and Bonds			0	0
7. Others (Specify)			0	0
<u>TOTAL</u>	NIL	NIL	NIL	NIL
<u>Note:</u> Amounts due within one year				



FORM OF FINANCIAL STATEMENTS (NON-PROFIT ORGANISATIONS)
Name of Entity: National Institute for Empowerment of Persons with Multiple Disabilities, Muttukadu
SCHEDULES FORMING PART OF BALANCE SHEET AS AT 31ST MARCH, 2010

(Amount in Rs.)

SCHEDULE 5 - UNSECURED LOANS AND BORROWINGS		Current Year	Previous Year
1. Central Government		0	0
2. State Government (Specify)		0	0
3. Financial Institutions		0	0
4. Banks:			
a) Term Loans		0	0
b) Other Loans (specify)		0	0
5. Other Institutions and Agencies		0	0
6. Debentures and Bonds		0	0
7. Fixed Deposits		0	0
8. Others (Specify)		0	0
<u>TOTAL</u>		NIL	NIL
<u>Note:</u> Amounts due within one year			

SCHEDULE 6 - DEFERRED CREDIT LIABILITIES		Current Year	Previous Year
a) Acceptances secured by hypothecation of capital equipment and other assets		0	0
b) Others		0	0
<u>TOTAL</u>		NIL	NIL
<u>Note:</u> Amounts due within one year			

FORM OF FINANCIAL STATEMENTS (NON-PROFIT ORGANISATIONS)

**Name of Entity: National Institute for Empowerment of Persons with Multiple Disabilities, Muttukadu
SCHEDULES FORMING PART OF BALANCE SHEET AS AT 31ST MARCH, 2010**

(Amount in Rs.)

SCHEDULE 7 - CURRENT LIABILITIES AND PROVISIONS	Current Year		Previous Year	
A. CURRENT LIABILITIES				
1. Acceptances				
2. Sundry Creditors				
a) For Goods	161500	161500	55600	55600
b) Others (Caution Money Deposit)				
3. Advances Received				
4. Interest accrued but not due on :				
a) Secured Loans/borrowings				
b) Unsecured Loans/borrowings				
5. Statutory Liabilities:				
a) Overdue	4036350	4036350	1601850	1601850
b) Others: New Pension Contribution	4312384	4312384	4446154	4446154
c) Unspent grant - balance as on 31-03-2010 in NIEPMD Main	1242271	1242271	5736285	10182439
d) Unspent grant - balance as on 31-03-2010 in NIEPMD ADIP	478582	478582	75856	75856
6. Other current Liabilities(Receipts of GPF(S) & (A)	39750	39750	31644	31644
7. Service Gratuity				
TOTAL (A)	10270837	10270837	11947389	11947389
B. Provisions				
1. For Taxation	0	0	0	0
2. Gratuity	0	0	0	0
3. Superannuation/Pension	0	0	0	0
4. Accumulated Leave Encashment	0	0	0	0
5. Trade Warranties/Claims	0	0	0	0
6. Others (Specify) - Audit Fees Payable	140000	140000	0	0
TOTAL (B)	140000	140000	0	0
TOTAL (A + B)	10410837	10410837	11947389	11947389



National Institute for Empowerment of Persons With Multiple Disabilities, Chennai.

Schedules forming Part of Balance Sheet as on 31.03.2010

(Amount-Rs.)											
SCHEDULE - 8 - FIXED ASSETS	DESCRIPTION	GROSS BLOCK			DEPRECIATION			NET BLOCK			
		Cost/valuation as at beginning of the year	Additions during the year	Deductions during the year	Cost/valuation at the year end	As at the beginning of the year	On opening & additions for 2009-10	On deductions upto the year	Total up to the Year-end	As at the current year-end	As at the previous year-end
1	2	3	4	5 (2+3-4)	6	7	8	9 (6+7-8)	10 (5-9)	11	
A. FIXED ASSETS											
	1) LAND										
	b) Leasehold										
	2) BUILDINGS										
	a) On Freehold Land	12905178	0	0	12905178	248694	0	719184	12185994	12434688	
	b) On Leasehold Land										
	c) Ownership Flats/Premises not belonging to the entity										
	3) PLANT MACHINERY & EQUIPMENT	2970635	99277	0	3069912	254122	0	732905	2337007	2491852	
	4) VEHICLES	1180263	0	0	1180263	143416	0	367574	812689	956105	
	5) FURNITURE, FIXTURES	2050055	39632		2089687	163241	0	605842	1483845	1607454	
	6) OFFICE EQUIPMENT	867620	72614		940234	76135	0	213287	726947	730468	
	7) COMPUTER/PERIPHERALS	937139	123452		1060591	133106	0	416946	643645	653299	
	8) ELECTRIC INSTALLATIONS					0					
	9) LIBRARY BOOKS	1274506	92836	0	1367342	92836	0	1367342	0	0	
	10) TUBEWELLS & W.SUPPLY										
	11) OTHER FIXED ASSETS										
	TOTAL OF CURRENT YEAR	22185396	427811	0	22613207	1115550	0	4423080	18190127	18873866	
	PREVIOUS YEAR										
B. CAPITAL WORK-IN-PROGRESS											
Note: No assets has been transferred or received during the year 2004-05											
TOTAL											
(Note to be given as to cost of assets on hire purchase basis included above)											

FORM OF FINANCIAL STATEMENTS (NON-PROFIT ORGANISATIONS)

**Name of Entity: National Institute for Empowerment of Persons with Multiple Disabilities, Muttukadu
SCHEDULES FORMING PART OF BALANCE SHEET AS AT 31ST MARCH, 2010**

		(Amount in Rs.)	
<u>SCHEDULE 9 - INVESTMENTS FROM EARMARKED/ENDOWMENT FUNDS</u>		Current Year	Previous Year
1. In Government Securities			
2. Other approved Securities			
3. Shares			
4. Debentures and Nonds			
5. Subsidiaries and joint Ventures			
6. Others (to be specified)			
<u>TOTAL</u>		NIL	NIL

		Current Year	Previous Year
<u>SCHEDULE 10 - INVESTMENTS - OTHERS</u>			
1. In Government Securities			
2. Other approved Securities			
3. Shares			
4. Debentures and Bonds			
5. Subsidiaries and joint Ventures			
6. Others (to be specified)			
<u>TOTAL</u>		NIL	NIL



FORM OF FINANCIAL STATEMENTS (NON-PROFIT ORGANISATIONS)
 Name of Entity: National Institute for Empowerment with Persons with Multiple Disabilities, Muthukadu
SCHEDULES FORMING PART OF BALANCE SHEET AS AT 31ST MARCH, 2010

	(Amount in Rs.)	
	Current year	Previous Year
SCHEDULE 11 - CURRENT ASSETS, LOANS, ADVANCES ETC.		
A. CURRENT ASSETS:		
1. <u>Inventories:</u>		
a) Stores and Spares		
b) Loose Tools		
c) Stock-in-trade		
Finished Goods		
Work-in-progress		
Raw Materials		
2. <u>Sundry Debtors:</u>		
a) Debts Outstanding for a period exceeding six months	0	0
b) Others - Security Deposit paid to Electricity Office	40770	40770
3. <u>Cash balances in hand U (including cheques/drafts and imprest)</u>	0	0
4. <u>Bank Balances:</u>		
a) <u>With Scheduled Banks:</u>		
- On Current Accounts	0	0
- On Deposit Accounts (includes margin money/Term Deposit with Indian Bank	144807037	135000000
- On Savings Accounts with Indian Bank (NIEPMD - Main a/c)	4312384	4446154
- On Savings Accounts with Indian Bank (NIEPMD - ADIP a/c)	1242271	5736285
- SBa/c with Indian Bank (GPFa/c)	478582	75856
- On Term Deposit & Recurring Deposit - New Pension Scheme Account	4036350	1601850
b) <u>With non-Scheduled Banks</u>		
- On Current Accounts		
- On Deposit Accounts (includes margin money)		
- On Savings Accounts		
5. <u>Post Office - Savings Accounts</u>		
TOTAL (A)	154917394	146860145

FORM OF FINANCIAL STATEMENTS (NON-PROFIT ORGANISATIONS)		(Amount in Rs.)	
Name of Entity: National Institute for Empowerment with Persons with Multiple Disabilities, Muttukadu			
SCHEDULES FORMING PART OF BALANCE SHEET AS AT 31ST MARCH, 2010			
SCHEDULE 11 - CURRENT ASSETS, LOANS, ADVANCES ETC.(Contd.)		Previous Year	
B. LOANS, ADVANCES AND OTHER ASSETS		Current year	
<p>1. <u>Loans:</u></p> <p>a) Staff (Motor Cycle, Computer, TA, Flood Advance and Festival Advance)</p> <p>b) Other Entities engaged in activities/objectives similar to that of the Entity</p> <p>c) Others (specify)</p>	632417	632417	636500
<p>2. <u>Advances and other amounts recoverable in cash or in kind or for value to be received:</u></p> <p>a) On Capital Account (Advances with CPWD) = 1031.00</p> <p>b) Prepayments : Telephone charges = 11933.00 : Insurance for School bus</p> <p>c) Others (Advance for Indian book house for purchase of journals)</p>	123430860	0	58430860
<p>3. <u>Income Accrued:</u></p> <p>a) On Investments from Earmarked/Endowment Funds</p> <p>b) On Investments - Others</p> <p>c) On Loans and Advances</p> <p>d) Others (Interest accrued from Term Deposit account (Interest receivable) (includes income due unrealised-Rs.))</p>	12964 265792	123709616	0
<p>4. <u>Claims Receivable</u></p>	2623330	2623330	5228362
TOTAL (B)	126965363	126965363	64295722
TOTAL (A + B)		281882757	211155867

FORM OF FINANCIAL STATEMENTS (NON-PROFIT ORGANISATIONS)
Name of Entity: National Institute for Empowerment of Persons with Multiple Disabilities, Muttukadu
SCHEDULES FORMING PART OF INCOME & EXPENDITURE AS AT 31ST MARCH, 2010

		(Amount in Rs.)	
		Current Year	Previous Year
<u>SCHEDULE 12 - INCOME FROM SALES/SERVICES</u>			
1) <u>Income from Sales</u>		0	0
a) Sale of Finished Goods			
b) Sale of Raw Material			
c) Sale of Scraps			
2) <u>Income from Services</u>			
a) Labour and Processing Charges			
b) Professional/Consultancy Services			
c) Agency Commission and Brokerage			
d) Maintenance Services (Equipment/Property)			
e) Others (Specify)			
<u>TOTAL</u>		0	NIL

		Current Year	Previous Year
<u>SCHEDULE 13 - GRANTS/SUBSIDIES</u>			
(Irrevocable Grants & Subsidies Received)			
1) a. Central Government - NIEPMD - Main Account		90000000	97700000
1) b. Central Government - NIEPMD - ADIP Account		1250000	8462174
2) State Government(s)			
3) Government Agencies			
4) Institutions/Welfare Bodies			
5) International Organisations			
6) Others (Specify) LESS: Capital Expenditure for 2009-10		-427811	-3,131,424
<u>TOTAL</u>		90822189	103030750

FORM OF FINANCIAL STATEMENTS (NON-PROFIT ORGANISATIONS)

Name of Entity: National Institute for Empowerment with Persons with Multiple Disabilities, Muttukadu

SCHEDULES FORMING PART OF INCOME & EXPENDITURE FOR THE PERIOD/YEAR ENDED 31ST MARCH, 2010

	(Amount in Rs.)	
	Current year	Previous Year
SCHEDULE 14 - FEES/SUBSCRIPTIONS		
1) Affiliation Fee	0	0
2) Course Fee (Diploma, Degree, PG, and Certificate Courses) Tuition Fees & Exam Fees	410143	200,200
3) Entrance Fees		
4) Annual Fees/Subscriptions		
5) Seminar/Program Fees (Application & Registration Fees)	267245	176,750
6) Consultancy Fees		
7) Others (specify)		
TOTAL	677388	376950

Note - Accounting Policies towards each item are to be disclosed

	Investment from Earmarked Fund		Investment-Others	
	Current year	Previous Year	Current year	Previous Year
	SCHEDULE 15 - INCOME FROM INVESTMENTS (Income on Invest. From Earmarked/Endowment Funds transferred to Funds)			
1) Interest				
a) On Govt. Securities				
b) Other Bonds/Debentures				
2) Dividends:				
a) On Shares				
b) On Mutual Fund Securities				
3) Rents				
4) Others (Specify)				
TOTAL	NIL	NIL	NIL	NIL
TRANSFERRED TO EARMARKED/ENDOWMENT FUNDS				



FORM OF FINANCIAL STATEMENTS (NON-PROFIT ORGANISATIONS)

Name of Entity: National Institute for Empowerment of Persons with Multiple Disabilities, Muttukadu
SCHEDULES FORMING PART OF INCOME & EXPENDITURE FOR THE PERIOD/YEAR ENDED 31ST MARCH, 2010

(Amount in Rs.)

	Current Year	Previous Year
SCHEDULE 16 - INCOME FROM ROYALTY, PUBLICATION ETC.		
1) Income from Royalty	0	0
2) Income from Publications	0	0
3) Others (specify)		
<u>TOTAL</u>	0	0

	Current Year	Previous Year
SCHEDULE 17 - INTEREST EARNED		
1) On Term Deposits:		
a) With Scheduled Banks	7495505	5228362
b) With Non-Scheduled Banks		
c) With Institutions		
d) Others		
2) On Savings Accounts:		
a) With Scheduled Banks Main a/c	243401	259065
b) With Non-Scheduled Banks ADIP a/c	172175	250615
c) With Institutions		
d) Others		
3) On Loans:		
a) Employees/Staff	4300	2800
b) Others	0	0
4) Interest on Debtors and Other Receivables	0	0
<u>TOTAL</u>	7915381	5740842
<u>Note:</u> Tax deducted at source to be indicated		

FORM OF FINANCIAL STATEMENTS (NON-PROFIT ORGANISATIONS)

**Name of Entity: National Institute for Empowerment of Persons with Multiple Disabilities, Muttukadu
SCHEDULES FORMING PART OF INCOME & EXPENDITURE FOR THE PERIOD/YEAR ENDED 31ST MARCH, 2010**

(Amount in Rs.)

	Current Year	Previous Year
SCHEDULE 18 - OTHER INCOME		
1) Profit on Sale/disposal of Assets		
a) Owned assets		
b) Assets acquired out of grants, or received free of cost		
2) Expost Incentives realized	0	0
3) Fees for Miscellaneous Services	0	0
4) Refunds		
5) Miscellaneous Income	210468	50967
<u>TOTAL</u>	210468	50967

	Current Year	Previous Year
SCHEDULE 19 - INCREASE/(DECREASE) IN STOCK OF FINISHED GOODS AND WORK IN PROGRESS		
a) Closing stock		
- Finished Goods		
- Work-in-progress		
b) Less: Opening Stock		
- Finished Goods		
- Work-in-progress		
<u>NET INCREASE/(DECREASE) [a-b]</u>	NIL	NIL



FORM OF FINANCIAL STATEMENTS (NON-PROFIT ORGANISATIONS)
Name of Entity: National Institute for Empowerment of Persons with Multiple Disabilities, Muttukadu
SCHEDULES FORMING PART OF INCOME & EXPENDITURE FOR THE PERIOD/YEAR ENDED 31ST MARCH, 2010

		(Amount in Rs.)	
<u>SCHEDULE 20 - EXPENDITURE ON PROGRAM AND SERVICES</u>		Current Year	Previous Year
Human Resource Development		1403223	1156069
Research and Development		0	0
Development of Service Models (Rs.166850/- Prior Period of 2008-09)		2401662	1607748
Consultancy Services		0	0
Documentation and Dissemination(Creation of Awareness		518778	818976
Extension and Outreach Services(National Workshop on MD)		0	0
Staff Welfare Expenses		0	0
Regional Sports Meet & Foundation Stone Laying Programme		0	1328271
Total		4323663	4911064

		Current Year	Previous Year
<u>SCHEDULE 20A - ESTABLISHMENT EXPENSES</u>			
a) Salaries and Wages		9835432	7690903
b) Allowances and Bonus		5031965	3896944
c) Contribution to Provident Fund		0	0
d) Contribution to Other Fund(Employer contribution to New Pension Scheme)		1195338	515154
e) Encashment of Earned Leave		81812	0
f) Others (specify): Payment to P&G A/c.		0	0
TOTAL		16144547	12103001

		Current Year	Previous Year
<u>SCHEDULE 20B - OTHER PROGRAM EXPENSES</u>			
a) North East States		0	0
b) ADIP Scheme		5916189	11639132
c) Pilot Project		0	0
d) Other expenditure		0	0
e) Transfer to ADIP Account		0	0
TOTAL		5916189	11639132

FORM OF FINANCIAL STATEMENTS (NON-PROFIT ORGANISATIONS)

**Name of Entity: National Institute for Empowerment of Persons with Multiple Disabilities, Muttukadu
SCHEDULES FORMING PART OF INCOME & EXPENDITURE FOR THE PERIOD/YEAR ENDED 31ST MARCH, 2010**

SCHEDULE 21 - OTHER ADMINISTRATIVE EXPENSES ETC.		(Amount in Rs.)	
	Current Year	Previous Year	
1. Expenditure on Support Services	1733252		1508444
2. Electricity and Power	200218		176342
3. Insurance	5629		19006
4. Repairs & Maintenance of buildings	393791		351872
5. Repairs and Maintenance of capital assets	163818		192055
6. Vehicles Hire Charges	283145		139088
7. Repairs & Maintenance of Vehicles	344126		390746
8. Postage & Telephone charges	319790		242471
9. Printing and Stationery	438616		372631
10. Travelling and conveyance Expenses	622604		743250
11. Auditors Remuneration	299800		0
12. Internal Auditor - Consultation Charges	84120		0
13. Loss on sale of Assets	0		0
14. Advertisement and Publicity	563533		523305
15. Refunds	0		0
16. Miscellaneous Expenditure	152927		180536
TOTAL	5605369		4839746



FORM OF FINANCIAL STATEMENTS (NON-PROFIT ORGANISATIONS)

**Name of Entity: National Institute for Empowerment of Persons with Multiple Disabilities, Muttukadu
SCHEDULES FORMING PART OF INCOME & EXPENDITURE FOR THE PERIOD/YEAR ENDED 31ST MARCH, 2010**

(Amount in Rs.)

<u>SCHEDULE 22 - EXPENDITURE ON GRANTS, SUBSIDIES ETC.</u>	Current Year	Previous Year
a) Grants given to Institutions/Organisations		
b) Subsidies given to Institutions/Organisations		
TOTAL	NIL	NIL
Note: Name of the Entities, their Activities along with the amount of Grants/Subsidies are to be disclosed		

(Amount in Rs.)

<u>SCHEDULE 23 - INTEREST</u>	Current Year	Previous Year
A) On Fixed Loans		
b) On Other Loans (including Bank Charges)		
c) Others (Specify)		
TOTAL	NIL	NIL

NATIONAL INSTITUTE FOR EMPOWERMENT OF PERSONS
WITH MULTIPLE DISABILITIES. CHENNAI.

ACCOUNTING POLICIES

Accounting policies of the Institute to be followed from the accounting the year of 2005-06 and onwards in order to maintain proper books of account with respect to:

- a) All sums of money received and expended and matters in respect of which the Receipts and Expenditure took place;
 - b) All sums of Revenues / Income received / recoverable and expenditure paid/payable;
 - c) All sales & purchases of goods; and
 - d) All Assets & Liabilities; to give a true and fair view of the affairs of the Institute.
1. The books of Accounts of the Institute will be kept on accrual basis to ensure the accomplishment of its essential features namely (a) revenue is recognized as it is earned irrespective of whether cash is received or not; and (b) Expenses are matched against such revenues.
 2. Since the books of accounts are to be kept on accrual basis the cut-off date will be reckoned as 15th April.
 3. The Books of Accounts of the Institute are to be kept according to the Double Entry System of Book Keeping.
 4. For proper identification & maintenance, codification of accounting heads has to be carried out.
 5. The Statement of Accounts of the Institute is to be prepared in the following format.
 - i) Receipts and Payments Account for the year 2009-10
 - ii) Income and Expenditure Account for the year 2009-10.
 - iii) Balance Sheet as on 31st March 2010.

Explanation:

i) **Receipts and Payments Account**

- a) All the actual Receipts are accounted for
- b) All the actual Payments are accounted for

ii) **Income and Expenditure Account:**

In addition to account of each item of actual Receipts & Payments the accrued income and outstanding liabilities are to be added to each head of Account for proper presentation and to know the overall position of income and expenditure.

iii) **Balance Sheet as on 31st March:**

Liabilities

- 1) Capital
- 2) Reserves
- 3) Secured Loans
- 4) Unsecured Loans
- 5) Current Liabilities

Assets

- 1) Fixed Assets less Depreciation
- 2) Investments
- 3) Current Assets, Loans & Advances
- 4) Miscellaneous expenditure (to the extent not written off)
- 5) Income and Expenditure Account.

Note: Schedules forming part of the Accounts wherever necessary are to be prepared and enclosed to the Accounts.

Depreciation:

The following guidelines are to be followed while providing the depreciation:

- i. To provide the depreciation on Fixed Assets acquired on or after 1-4-2005 on yearly basis.
- ii. To adopt the system of written down value method.



- iii. For assets acquired up to the month of September during the financial year full depreciation is worked out at the prescribed percentage. For assets acquired from the month of October to February depreciation is worked @ 50% of prescribed percentage. For assets acquired on March, Nil depreciation.
- iv. The life of each asset and rates of depreciation under “Written Down Value Method” are indicated hereunder:

a) Land	:	No depreciation
b) Buildings	:	50 years of life 2% depreciation
c) Plant, Machinery & Equipments	:	10 years 10% depreciation
d) Vehicles	:	6 years 15% depreciation
e) Furniture & Fixtures	:	10 years 10% depreciation
f) Office Equipments	:	10 years 10% depreciation
g) Computer & Peripherals	:	5 years 20% depreciation
h) Library Books	:	No life 100% depreciation.

Neeradha
(Dr. Neeradha Chandra Mohan)
Director

Schedule: 25

NATIONAL INSTITUTE FOR EMPOWERMENT OF PERSONS
WITH MULTIPLE DISABILITIES, CHENNAI.

NOTES FORMING PART OF THE ANNUAL ACCOUNTS

1. The Annual Accounts were compiled in the format of Financial Statements for the Central Autonomous Bodies (Non-profit organizations and similar Institutions).
 - a) Balance Sheet as at 31-03-2010.
 - b) Income and Expenditure Account for the year 2009-10
 - c) Schedules 1-25 as per the format.
 - d) Receipts & payments account for the year 2009-10.
2. The Accounts have been prepared on accrual basis.
3. Depreciation is being provided on written down value method.
4. Accounting policies have been prepared and they are being followed.
5. Out of the total receipts of Rs.10,76,25,922/- (which includes opening balances, grant-in-Aid, grants for specific purposes, receipts from other organizations, loans and advances and internal receipts), the amount spent (including Advance to CPWD for Rs.6.50 Crores) is Rs.9,75,56,335/- leaving balance of Rs.1,00,69,587/- the net balance in NIEPMD Main Savings Account is Rs.43,12,384/-, in NIEPMD ADIP Savings account is Rs.12,42,271/- in NIEPMD – GPF savings a/c is Rs.4,78,582/- and RIP & RD a/c Deposit is Rs.40,36,350/- meant for New Pension Scheme.
6. The physical verification of the assets and stores for the year 2009-10 is in progress.
7. The utilization certificate for the grants released by the Ministry has been furnished and there are no pending utilization certificates.
8. The figures have been classified wherever necessary.

(Dr. Neeradha Chandra Mohan)
Director

**National Institute for Empowerment of Persons with Multiple Disabilities
Chennai**

Details of Pay & Allowances for the year 2009-10

Sl.No.	Particulars	2008-09	2009-10
1	Pay Account	5762099	7645624
2	Dearness Pay	-113837	-1308976
3	Grade Pay	1831052	3194496
4	Non-Practising Pay	161462	283748
5	Personal pay	50127	20540
6	Total on Salaries	7690903	9835432
7	Newspaper Allowance	18965	15518
8	House Rent Allowances	1541872	2147468
9	City Compensatory Allowances	51648	0
10	Dearness Allowances	1091465	1194905
11	Trasnpport Allowances	506720	876343
12	Washing Allowances	720	660
13	Medical Claims Reimbursement	592168	457419
14	Ad-hoc Bonus	29582	37994
15	Leave Salary & Pension Contribution	6763	83835
16	LTC	29221	69329
17	Book Allowance	24580	24000
18	Reimbursement of Tuition fees	3240	124494
	Total on Allowances and Bonus	3896944	5031965
19	Encashment of Earned Leave	0	81812
20	New Pension Contribution	515154	1195338
	Total	12103001	16144547

Details of Procurement of Capital Assets for Receipts & Payments

Sl. No.	Particulars	2008-09	2009-10
1	Land & Buildings	238746	0
2	Computer & Peripherals	290050	123452
3	Plant & Machinery	563540	99277
4	Office Equipment	255888	72614
5	Furniture & Fixtures	273191	39632
6	Motor Vehicles	0	0
7	Library Books	309456	92836
	Total	1930871	427811

National Institute for Empowerment of Persons with Multiple Disabilities

National Institute for Empowerment of Persons with Multiple Disabilities Details of Administrative Expenses for Income & Expenditure Account

Sl. No.	Particulars	2008-09	2009 10
1	Support Services (Security & Cleaning)	1508444	1733252
2	Travelling & Conveyance Expenses	743250	622604
3	Vehicle Hire Charges	139088	283145
4	Telephone & Postage Charges	242471	319790
5	Printing & Stationery	372631	438616
6	Advertisement & Publicity	523305	563533
7	Hospitality	28730	20346
8	Electricity Charges	176342	200218
9	Repairs & Maintenance of Buildings	192055	393791
10	R & M of TATA Sumo	163814	141399
11	Publication & Periodicals	0	27960
12	Bank Charges	20412	3765
13	R & M of School Bus	371	202727
14	Miscellaneous Expenditure	226932	94316
15	Audit fees	131023	383920
16	Renovation & Repairs of Temporary building	351872	0
17	Insurance	0	5629
18	Legal Fees	19006	6540
19	R&M of Computers	0	113200
20	R&M of Plant & Machinery	0	8834
21	R&M of Office Equipments	0	41784
	Total	4839746	5605369

Details of Administrative Expenses for Receipts & Payments Account

Sl. No.	Particulars	2008-09	2009-10
1	Support Services (Security & Cleaning)	1508444	1733252
2	Travelling & Conveyance Expenses	743250	622604
3	Vehicle Hire Charges	139088	283145
4	Telephone & Postage Charges	242471	320821
5	Printing & Stationery	372631	438616
6	Advertisement & Publicity	523305	563533
7	Hospitality	28730	20346
8	Electricity Charges	176342	200218
9	Repairs & Maintenance of Buildings	192055	393791
10	R & M of TATA Sumo	163814	141399
11	Publication & Periodicals	0	27960
12	Bank Charges	20412	3765
13	R & M of School Bus	371	202727
14	Miscellaneous Expenditure	226932	94316
15	Audit fees	131023	243920
16	Renovation & Repairs of Temporary building	351872	0
17	Insurance	0	17562
18	Legal Fees	19006	6540
19	R&M of Computers	0	113200
20	R&M of Plant & Machinery	0	8834
21	R&M of Office Equipments	0	41784
	Total	4839746	5478333



National Institute for Empowerment of Persons with Multiple Disabilities, Chennai
Details of Expenditure on Programme & Services under Schedule No 20A.

Sl. No.	Particulars	2008-09	2009-10
1	Human Resource Development:		
	Long Term Training Programmes	414893	232361
	Short Term Training Programmes	723017	1031450
2	Research & Development	0	0
3	Development of Service Models	1607748	2401662
4	Creation of Awareness Programme	818976	518778
5	National Workshop on MD	0	0
6	Foundation Stone Laying Programme	617212	0
7	HRD Services	0	130548
8	Staff Welfare Expenses	0	0
9	Regional Sports Meet	711059	0
10	Medicines a/c	18159	8864
	Total	4911064	4323663

Details of Expenditure under ADIP Scheme under Schedule 20B

Sl. No.	Particulars	2008-09	2009-10
1	Aids & Appliances for V.I. persons Expendiutre	215955	113440
2	Aids & Appliances for O.H. persons Expendiutre	7076727	4842907
3	Aids & Appliances for M.R. persons Expendiutre	2677309	476233
4	Aids & Appliances for H.H. persons Expendiutre	1295715	73400
5	Samarthya 2008 Expenditure	0	0
6	ADIP Identification Camp Expenditure	50151	117271
7	ADIP Distribution Camp Expenditure	323275	292938
	Total Expenditure	11639132	5916189

National Institute for Empowerment of Persons with Multiple Disabilities
Chennai

Details of Miscellaneous Expenditure under Schedule 21

Sl. No.	Particulars	2008-09	2009-10
1	Miscellaenous Expenditure	131023	94316
2	Legal Fees	0	6540
3	Publication & Periodicals	20412	27960
4	Hospitality	28730	20346
5	Bank Charges	371	3765
	Total Expenditure	180536	152927

Details of Miscellaneous Income under Schedule 18

Sl. No.	Particulars	2008-09	2009-10
1	Sale of Scrapes	0	126000
2	Sale of Old Newspapers	1551	0
3	Sale of Study Materials/ Tender Forms	3600	8600
4	Hostel Maintanence Charges	19425	22200
5	Miscellaneous Receipts	3231	7113
6	Guest House Receipts	23160	33675
7	User Charges Receipts	0	12880
	Total Income	50967	210468

National Institute for Empowerment of Persons with Multiple Disabilities

Chennai

Details of Advances paid to staff and outstanding advances as on 31-03-2010

SI.No.	Name & Designation	Purpose	Amount	Recov for 2008-09	Balance as on 31.03.2010
	Shri/Smt				
1	M. Rajesh, Infor. & Media Off	Motor Cycle Adv.	21000	6000	15000
2	Devendra Prasad, R.O.	Motor Cycle Adv.	21000	6000	15000
3	I.G. Anusuya, R.O.	Motor Cycle Adv.	21000	6000	15000
4	K. Balabaskar, Lecturer	Motor Cycle Adv.	21000	6000	15000
5	Dhanavendan, Special Teach	Motor Cycle Adv.	21000	6000	15000
6	S.K. Samy, P.A. (Estate)	Motor Cycle Adv.	21000	6000	15000
7	Sunil Kumar, U., P.A. (S & P)	Motor Cycle Adv.	21000	6000	15000
8	Rajesh Ramachandran, R.O.	Motor Cycle Adv.	25500	6000	19500
9	P.Angelin Golda, PA	Motor Cycle Adv.	25500	6000	19500
10	S.Venkateswaran, PA	Motor Cycle Adv.	26000	6000	20000
11	S.Gurumoorthy, R.O	Motor Cycle Adv.	25500	6000	19500
12	J.Md.Ibrahim, PA	Motor Cycle Adv.	26000	26000	0
13	M.Kathiravan, Spl. Teacher	Motor Cycle Adv.	28000	6000	22000
14	Stalin Arul Regan, Spl. Teach	Motor Cycle Adv.	28000	6000	22000
15	Sobhiya Vani, Spl. Teacher	Motor Cycle Adv.	28000	6000	22000
16	S. Krishnamurthy, Peon	Motor Cycle Adv.	15600	3600	12000
	Total		375100	113600	261500
17	A. Amarnath, Lecturer.	Computer Adv.	21000	6000	15000
18	Rajesh Ramachandran, R.O.	Computer Adv.	21000	6000	15000
19	K.Balabaskar, Lecturer	Computer Adv.	25500	6000	19500
20	Pragya Verma, R.O	Computer Adv.	25500	6000	19500
22	S.Venkateswaran, PA	Computer Adv.	26000	6000	20000
23	I.G. Anusuya, R.O.	Computer Adv.	25500	6000	19500
24	Sunil Kumar, U., P.A. (S & P)	Computer Adv.	30000	2500	27500
25	Devendra Prasad, R.O.	Computer Adv.	30000	2000	28000
26	Gurumoorthy, R.O	Computer Adv.	30000	2000	28000
27	J.V. Subbaraman	Computer Adv.	30000	1500	28500
28	S.K. Samy, P.A. (Estate)	Computer Adv.	22000	22000	0
29	P.S. Srinivas, Asst.Prof	Computer Adv.	20000	20000	0
	Total		306500	86000	220500

National Institute for Empowerment of Persons with Multiple Disabilities

Details of Advances paid to staff and outstanding advances as on 31-03-2010

SI.No.	Name & Designation	Purpose	Amount	Recov for 2008-09	Balance as on 31.03 2010
	Shri/Smt				
28	Sunil Kumar, U., P.A. (S & P)	Flood Advance	4800	2400	2400
29	Devendra Prasad, R.O.	Flood Advance	4800	2400	2400
30	I.G. Anusuya, R.O.	Flood Advance	4800	2400	2400
31	Dhanavendan, Special Teach	Flood Advance	4800	2400	2400
32	S.K. Samy, P.A. (Estate)	Flood Advance	4800	2400	2400
33	Rajesh Ramachandran, R.O.	Flood Advance	4800	2400	2400
34	P.Angelin Golda, PA	Flood Advance	4800	2400	2400
35	S.Venkateswaran, PA	Flood Advance	4800	2400	2400
36	J.Md Ibrahim, PA	Flood Advance	4800	2400	2400
37	Pragya Verma, R.O	Flood Advance	4800	2400	2400
38	S. Krishnamurthy, Peon	Flood Advance	4800	2400	2400
	Total		52800	26400	26400
39	S K. Samy, P.A. (Estate)	Medical Advance	45000	0	45000
	Total		45000	0	45000
40	Devendra Prasad, R.O	LTC Advance	4717	0	4717
	Total		4717	0	4717
41	Dr. Neeradha Chandramohan, Director	T A Advance	2000	0	2000
42	Dr. M.K. Tomy, Asst.Prof	T.A Advance	6300	0	6300
43	Dr. Vijayalakshmy, Lecturer	T.A Advance	15000	0	15000
44	P. Kamaraj, Lecturer	T.A Advance	9000	0	9000
45	B.S. Santhosh Kanna, Lecturer	T.A Advance	19700	0	19700
46	M. Rajesh, Info & Media Officer	T A Advance	2000	0	2000
47	J.Md. Ibrahim, P A.(Accounts)	T A Advance	2000	0	2000
48	Rajesh Ramachandram, R O	T A Advance	900	0	900
49	S. Venkateswaran, P.A. (Estt.)	T.A Advance	1800	0	1800
	Total		58700	0	58700
50	Rajesh Ramachandran, R.O	Festival Advance	3000	1200	1800
51	I.G. Anusuya, R.O	Festival Advance	3000	600	2400
52	Sunil Kumar. U., P A. (S&P)	Festival Advance	3000	600	2400
53	J.Md Ibrahim, P.A. (Accounts)	Festival Advance	3000	1800	1200
54	Stalin Arul Regan, Spl. Teacher	Festival Advance	3000	600	2400
55	S.K. Samy, P.A. (Estate)	Festival Advance	3000	300	2700
56	S.Krishnamurthy, Peon	Festival Advance	3000	300	2700
	Total		21000	5400	15600
	Grand Total				632417

APPENDIX-A

General Council

As per Clause 9 of the Bye-laws of NIEPMD the General Council of this Institute was constituted vide Govt. of India, Ministry of Social Justice & Empowerment Order No.F.No.8-9/2006- NI.I dated 03rd July 2007.

List of Members of General Council

1.	Shri.K.M.Acharya Secretary to GOI Ministry of Social Justice & Empowerment, Shastri Bhavan. New Delhi 110001.	President
2.	Ms.Poonam Natarajan, Chair Person, The National Trust, New Delhi.	Member
3.	Maj.Gen.Ian Cardozo Chairperson, Rehabilitation Council of India, New Delhi.	Member
4	Dr.Arbind Prasad Joint Secretary to GOI, Ministry of Social Justice & Empowerment, Shastri Bhavan, New Delhi 110001.	Member
5	Shri.P.K.Sinha Financial Adviser, Ministry of Social Justice & Empowerment, Shastri Bhavan,New Delhi 110001.	Member
6	Director General of Employment & Training, Ministry of Labor, Government of India, Shram Shakti Bhawn, Rafi Marg, New Delhi -110001	Member
7	Shri Amitabh Mehrotra, Gurudaya Niwas, 26,Sachivalaya Colony Lucknow (U.P).	Member
8	Dr.S.S.Badrinath Sankara Netralaya, 18, College Road, Chennai (T.N.).	Member

National Institute for Empowerment of Persons with Multiple Disabilities

9.	Shri A. Balraj, New No. 12 9 Old No.76) J-block, Anna Nagar, Chennai – 600102.	Member
10.	Ms. Nandita Gurjar BPO Division, Infosys, Bangalore.	Member
11.	Shri N.Thomas Ngullie CATZW Lake View, Kher Mohal Dimapur, Nagaland.	Member
12.	Dr. Kalyana Krishnan Indian Institute of Technology I.I.T. Post office, Chennai (T.N.)	Member
13.	Dr. R. K. Srivastava Director General of Health Services Ministry of Health & Family Welfare, Government of India, New Delhi	Member
14.	Dr.P.Rama Mohana Rao, Principal Secretary, Department of Social Welfare Government of Tamil Nadu	Member
15.	Shri.V.K.Subburaj, Principal Secretary & Director Medical Health Services Government of Tamil Nadu	Member
16.	Joint Secretary to G O I, Ministry of Education, Government of India, Shastri Bhawan, New Delhi – 115.	Member
17	Prof . R.Rangasayee Director, AYJNIHH K.C.Marg, Bandra Reclamation, Bandra (West) Mumbai – 50.	Member
18	Shri.T.C.Sivakumar, Director, NIMH Manovikas Nagar, Secunderabad – 500 009.	Member
19.	Ms.Anuradha Mohit Director, NIVH 116, Rajpur Road, Dehradun – 01.	Member
20	Dr.Ratnesh Kumar, Director, NIOH B.T.Road, Bon-Hooghly, Kolkata - 90.	Member
21	Dr.Neeradha Chandramohan, Director, NIEPMD Muttukadu, East Coast Road, Chennai 603112.	Member Secretary

APPENDIX- B

Executive Council

As per Clause 12 of the Bye-laws of NIEPMD the Executive Council of the Institute was constituted vide Govt. of India, Ministry of Social Justice & Empowerment Order No.F.No.8-9/2006-NI.I dated 03rd July 2007.

List of Members of Executive Council

1.	Dr.Arbind Prasad Joint Secretary to GOI Ministry of Social Justice & Empowerment, Shastri Bhavan, New Delhi 110001.	Chairperson
2.	Shri.P.K.Sinha, Financial Adviser Ministry of Social Justice & Empowerment, Shastri Bhavan, New Delhi 110001.	Member
3.	Col. Sanjay Sharan, Director, NIs Ministry of Social Justice & Empowerment, Shastri Bhavan. New Delhi 110001.	Member
4	Shri C. Arun Kumar Chennai (Tamil Nadu).	Member
5	Dr. D. Nagaraja, Director, NIMHANS, Bangalore	Member
6	Dr.Neeradha Chandramohan, Director, National Institute for Empowerment of persons with multiple Disabilities, Muttukadu, ECR, Road, Chennai 603112.	Member Secretary

APPENDIX- C

Academic Committee

List of Members of Academic Committee

01	Dr.Neerdha Chandramohan, Director, NIEPMD, Chennai.	Convener
02	Dr. A.K.Mital, Former Regional Director, NIVH, Chennai.	Member
03	Prof. P.Jayachandran Director, Vijaya Human Services, Chennai	Member
04	Sr.(Dr.) Rita Mary, Guidance Home for the Adult Deaf Girls, Chennai	Member
05	Dr. Vijayalakshmi Myreddi Lecturer in Spl. Edn., NIMH, Secunderabad.	Member
06	Shri Akhil Paul, Director, Sense International, Ahmadabad.	Member
07	Dr. Karunanidhi Head of the Department (Psychology), University of Madras, Chennai.	Member
08	Prof. Rangaswami, Principal & Co-ordinator, Sweekar – Upkaar Rehabilitation Institute, Hyderabad.	Member
09	Prof. Roopa Nagaraja Head of the Department, Dept. of Speech & Hearing, Ramachandra Medical College, Chennai.	Member
10	Dr. Purushottam Freelance Psycholinguistics Bangalore	Member
11	Dr. Ratna, Former Director, AIISH, Bangalore.	Member

The Academic Committee shall advise the Institute in the matters of Scientific Research and establishing Institutional, Non-Institutional programs for the education and training of personnel in the field of Multiple Disabilities.



Annexure 1

A. Course Content of Diploma Programs in Special Education:

Theory Papers	DSE (CP)	DSE (DB)	DSE (ASD)
Paper I	Medical Aspects	Introduction to disabilities and mobility science	Autism, Nature and Needs
Paper II	Child Development, Psychology & Rehabilitation	Assessment and Evaluation	Human Development & Psychology
Paper III	Assessment Physical & Functional Management	Communication	Curriculum & Teaching
Paper IV	Communication Hearing, Language & Speech	Instructional strategies & Interventions	Family & Community
Paper V	Education for Children with Cerebral Palsy	Deafblindness – Perspectives & Practices	Therapeutics
Practicum			
Practicum I	Assessment, Physical and Functional Management	Assessment & Evaluation	Individualized Program Plan
Practicum II	Communication, Hearing, Language & Speech	Orientation & Mobility	Group Teaching
Practicum III	Education for Children with Cerebral Palsy	Communication	Therapeutics - A
Practicum IV	Project	Preparation of teaching aids	Therapeutics - B
Practicum V	Assignment	Teaching practice	-
Practicum VI	-	Case Study	-
Practicum VII	-	Project work	-
Practicum VIII	-	Use of Special aids and appliances	-

Course Content of Certificate in Prosthetics and Orthotics:

Theory Papers	
Paper I	Basic Clinical sciences
Paper II	Workshop practices, machines and tools material
Paper III	Orthotics (Lower, Upper & Spinal)
Paper IV	Prosthetics (Lower & Upper)
Practicum	
Practicum I	Orthotics
Practicum II	Prosthetics

B. Objectives of the Course:

I. Diploma in Special Education (Cerebral Palsy):

- To demonstrate a thorough knowledge of psychological aspects of disability.
- To demonstrate thorough knowledge of medical aspects: Basic Anatomy, Physiology & Pathology in general and the nervous & musculoskeletal system in particular.
- To differentiate between Typical and Atypical patterns of motor, cognitive speech, language & communication development in children.
- Able to carry out specific physical, functional, speech and language therapies.
- Program for children with multiple disabilities under the guidance of physical, occupational, speech and language therapists.
- To plan and implement instructional programs.
- To prepare special education programs in various settings using appropriate low-cost technology.
- To make and use aids for classroom instruction.
- To develop requisite skills to work in IBR and CBR settings.



II. Diploma in Special Education (Deafblind):

- To train the students to understand the implications of deafblindness on the development of a child and also to make them capable of teaching persons with deafblindness, the skills needed for independent living after a thorough assessment.
- To train the students to develop a need based curriculum and activities in various settings for the persons with deafblindness.
- To train the students in all curriculum needs that are essential for person with Deafblindness including vocational skills.

III. Diploma in Special Education (Autism Spectrum Disorder):

- To train the students to assess and develop curriculum for persons with Autism Spectrum Disorders.
- To train the students to learn classroom management & record maintenance.
- To train the students to apply principles of psychology for behavior management of persons with Autism Spectrum Disorders.
- To empower the students to use other special therapies for persons with Autism Spectrum Disorders

IV. Certificate Course in Prosthetics & Orthotics

- To train the personnel about prosthetic & orthotic appliances and their usages.
- To train in measurement, fabrication, fitment of different types of prosthetic & orthotic devices.
- To enrich knowledge in prosthetic & orthotic discipline and their importance in application to the needy person with disabilities.

C. List of Successful Candidates with their Placement status for the year 2009-10

Diploma in Special Education (CP)

S.No	Name of the student	Category	State	Placement Details	% of Marks
01*	Dhamayanthi, C No:63A, Dharkash Street, Aathukdi (PO), Sirkazhi (Tk) – 609117.	SC	Tamil Nadu	SSA, Villupuram	81.4% Distinction
02	Edwardrani, D No:41/4, Pandavar Mangalam, Kovilpatti (TK), Tuticorin – 628 502.	OBC	Tamil Nadu	SSA, Villupuram	68% I class
03	Mahalakshmi, R 5/14, East street, Villur (PO), Perayur (TK), Madurai – 625 707.	BC	Tamil Nadu	SSA, Villupuram	71.8% I class
04	Mangaiyarkarasi, M 19, Kottur, Pattagal street, Kurungulam (PO),Kollapuram (Via), Thiruvarur Dt – 609 608.	BC	Tamil Nadu	SSA, Villupuram	82.1% Distinction
05	Murugeswari, C 7/1626, Vadakkupatti, Palavanatham, Virudhunagar.	BC	Tamil Nadu	Sapthagiri Special School, Virudhunagar	74.7% I Class
06	Nagarani, R 7/61, Main street, M.Reddiapatti Post, Aruppkottai (TK), Virudhunagar Dt – 626 118.	BC	Tamil Nadu	SSA, Villupuram	65.6% I class
07	Porkodi, K 5-29-4, EB Colony, North side, Aruppkottai – 626 101.	BC	Tamil Nadu	Sapthagiri Special School, Virudhunagar	69.5% I class



S.No	Name of the student	Category	State	Placement Details	% of Marks
08	Priya, R Kanjanyakkanpatti, Mudakkuruchi (PO), Kariappati Tk, Virudhunagar Dt	OBC	Tamil Nadu	SSA, Villupuram	62.3% I class
09	Rajalakshmi, P 2-43, Pandaravadai street, Thalaichangadu (PO), Nagai Dt – 609 107.	OBC	Tamil Nadu	SSA, Villupuram	65.1% I class
10	Ruba, K Kanjanyakkanpatti, Mudakkuruchi (PO), Kariappati Tk, Virudhunagar Dt	DNC	Tamil Nadu	SSA, Villupuram	70.5% I class
11	Sangeetha, N 954, Kamarajar Street, Valarpuram (PO), Arakkonam Tk, Vellore Dt – 631 003.	OBC	Tamil Nadu	SSA, Villupuram	60.5% I class
12	Saranya, M 71/50, Dr.Ambedkar Street, Thiruvannamalai Dt.	SC	Tamil Nadu	SSA, Villupuram	74.2% I class
13	Sathiya, M 1/17, Thiruvalluvar street, Sivagangai Nagar, Gowrivakkam, Chennai.	Gen	Tamil Nadu	Little Hearts Special school, Panaiyur	66.1% I class
14	Suresh Kannan, P Middle street, Periya Suigalandhi, Thiruthuraiipoondi (PO & TK)	SC	Tamil Nadu	SSA, Villupuram	68.9% I class

National Institute for Empowerment of Persons with Multiple Disabilities

Diploma in Special Education (Db)

S.No	Name of the student	Category	State	Placement Details	% of Marks
01	Abirami, K Karaimedu, Melapurampallam(PO), Tharangambadi(TK), Nagai Dt – 609107	BC	Tamil Nadu	Day care centre for the Differently abled children, Villupuram	73.6% I class
02	Ambhore Amol Vinodrao Plot No:52, Galli, No:5, Bajrang Nagar, Nagpur – 440 027.	OC	Maharashtra	Inclusive Education for Disability, Nagpur.	78.9% Distinction
03	Annapoornya, T.S C/o.Little Hearts Society, No:13, Velu Street, Panayur, Chennai – 603 119.	OC	Tamil Nadu	NIEPMD, Chennai	67.9% I class
04	Iyappan, SMG No:17, Meenambal Sivaraj Street, Ambedkar Nagar, Arakkonam (T.K) Vellore Dt – 631 002.	SC	Tamil Nadu	Tamil Nadu Association for Blind, Vellore, T.N	72.1% I class
05	Jayasankar, V Dr.Annal Nagar, Murappur (PO), Harur (TK), Dharmapuri Dt – 635 305.	SC	Tamil Nadu	Day care centre for the TN Differently abled children, Dharmapuri	71% I class
06	Kamatchi, R 36, Mandaveli Mariamman Koil Street, Solai Nagar, Puducherry – 605 003.	OBC – HI	Puducherry	Govt.Higher Secondary School for Deafblind, Marakanam, T.N.	74.% I class
07	Karpagavalli, G Karaimedu, Melapurampallam (PO), Tharangambadi (TK), Nagai Dt – 609 107.	OBC	Tamil Nadu	Day care centre for the Differently abled children, Villupuram	72.3% I class
08	Mukesh Kumar Nagar Vill.Umrach Post, Ramganj Balaji, Thane Dist. Rajasthan.	BC	Rajasthan	Govt.upper primary school, Khojgate, Rajasthan	80.2% Distinction



S.No	Name of the student	Category	State	Placement Details	% of Marks
09*	Nishanthy, I 1, Neerodu street, Mudaliarpet, Puducherry – 605 004.	MBC	Puducherry	Block Resource Centre, Villupuram, T.N	83.3% Distinction
10	Ramya, D 50/33, Town station south street, Mayiladuthurai, Nagai Dt. – 609 001.	SC	Tamil Nadu	NIEPMD, Chennai.	73.2% I class
11	Sankaran, C 18A, 8th Street, Rajendra Nagar, Gingee(TK & PO), Villupuram Dt - 604 202.	SC	Tamil Nadu	Block Resource Centre, Villupuram, T.N	58.3% II class
12	Saranya, G Karaimedu, Melapurampallam (PO), Tharangambadi (TK), Nagai Dt – 609 107.	OBC	Tamil Nadu	Day care centre for the Differently abled children, Villupuram	74.8% I class
13	Valarmathi, S Near Bus stand Nodthappur (PO) Veppanttai (TK), Perambalur Dt.	OBC	Tamil Nadu	Day care centre for the Differently abled children, Villupuram	75.6% Distinction
14	Yoganayaki, G Karaimedu, Melapurampallam (PO), Tharangambadi (TK), Nagai Dt – 609 107.	OBC	Tamil Nadu	Day care centre for the Differently abled children, Villupuram	68% I class

National Institute for Empowerment of Persons with Multiple Disabilities

Diploma in Special Education (ASD)

S.No	Name of the student	Category	State	Placement Details	% of Marks
01	Dive Rohit Ashok No:52, Galli,Bajrang Nagar, Manewade Road, Nagpur – 440 027.	SC	Maharashtra	Higher studies	67.1% I class
02	Gulsundare Sulochana Ajabrao Post Dahigaon Purna TK, Chandur Bazar, Dt.Amravathi, Maharashtra.	SC	Maharashtra	Not working	69.3% I class
03	Guna Sundari K No:33, Guru Illam, 1 st Street, Anna Nagar, Pattabiram, Chennai – 72	SC	Tamil Nadu	V-Excel, Chennai	78.9% Distinction
04	Kasthuri, R 36, Mandaveli Mariamman Koil street, Solai Nagar, Pudhucherry – 605 003.	OBC	Puducherry	Sathya Special School, Pudhucherry	69.5% I class
05	Khobragade Mithun Shivcharan At post Chandori Malipar TK&Dt. Bhandara, Maharashtra – 441 904.	SC	Maharashtra	Higher studies	68.9% I class
06	Mala, C Nagalamman Koil Salai,Semencherry Kuppam, Kovalam, Chennai – 603 112.	MBC	Tamil Nadu	NIEPMD, Chennai	68.5% I class
07	Metange Sushama Dhanraj At-Lasanapur, Po-Rama, Tk-Chadbur Bazar, Dt-Amravathi , Maharashtra – 444 806	SC	Maharashtra	Not working	69.6% I class
08	Nirmaladevi M No:2, Shanthi Avenue, Dr.Radhakrishna Nagar, Thiruvanmiyur, Chennai – 41.	BC	Tamil Nadu	Not working	74.9% I class
09*	Padma Kanna, S Plot No:80, Classic Gardens, Kumaraswamy Nagar, Sholinganallur, Chennai.	OBC	Tamil Nadu	Not working	82.3% Distinction
10	Raut Amit Rajendra At Post Chandowi (Malipar) Tah Dist, Bhandra, Maharashtra – 441 904.	SC	Maharashtra	Higher studies	67.3% I class



S.No	Name of the student	Category	State	Placement Details	% of Marks
11	Shabana S 1/292, 2 nd street, 36, Muttukadu, Chennai – 603 112	OBC	Tamil Nadu	NIEPMD, Chennai	76.1% Distinction
12	Shambharkar Rani Raju Plot No:10, Bajrang Nagar, Manewada Road, Nagpur – 440 027.	SC	Maharashtra	Higher Studies	76.7% Distinction
13	Thenmozhi, N 4/178, Bagath singh street, Pallavan Nagar, Chennai.	OBC	Tamil Nadu	NGO	72% I class
14	Yogeswari, M 1/129, Samiyan Thoppu, Veeriyankottai (PO), Peravavani Tk, Thanjavur Dist – 614 802.	OBC	Tamil Nadu	Sathya Special School, Pudhucherry	68% I class

Certificate in Prosthetics and Orthotics

S.No	Name of the student	Category	State	Placement Details	% of Marks
01	Jayawarthanam, K Dr.Annal Nagar, Morsffur (PO), Harur (TK), Dharmapuri Dt – 635 305.	SC	Tamil Nadu	Higher Study	63% I class
02	Nazar, E No:178/4, Round Road, Pudur, Dindigul – 5.	BC – OH	Tamil Nadu	Working in NGO	62.2% I class
03	Ramesh, R No:92, Kattankulathur, GST Road, Kancheepuram Dt – 603 203.	BC	Tamil Nadu	Sevaman Trust, Adyar, Chennai	79.2% Distinction
04	Senthil Kumar, B No:76, Padmavathy Nagar Extn, Surapet Main Road, Vinayagapuram, Chennai – 99.	SC	Tamil Nadu	Searching for placement	57.8% II class
05*	Thangarasu, M 20, Kannagi Street, Nehru Nagar, Checkpost, Velacheery, Chennai – 600 042.	Gen	Tamil Nadu	Private Practice	80% Distinction

Note : * Indicates First Rank Holder in the Final Examination conducted by RCI

First Rank Holders 2009-2010:



Thangarasu M
(CPO)



Nishanthi I
DSE(Db)



Dhamayanthi C
DSE(CP)



Padma Kanna S
DSE(ASD)

Details of various Scholarships received by the students during the Academic year 2009-10

Diploma in Special Education (Db)

S.No.	Name of the Student	Reg. No (Manipal University)	Amount Received	Scholarship Details
1	Iyyappan.S.M.G	093100039	Rs.4545.00	SC Scholarship,Dept of Adi-Dravidar, Govt of TN
2	Jayasankar.V	093100040	Rs.4545.00	SC Scholarship,Dept of Adi-Dravidar, Govt of TN
3	Ramya.D	093100045	Rs.4545.00	SC Scholarship,Dept of Adi-Dravidar, Govt of TN
4	Valarmathi.S	093100048	Rs.4545.00	SC Scholarship,Dept of Adi-Dravidar, Govt of TN
5	Sankaran.C	093100046	Rs.4545.00	SC Scholarship,Dept of Adi-Dravidar, Govt of TN
6	R.Kamatchi	093100041	Rs.16,700.00	National Scholarship for the persons with Disabilities for the year 2009-10



Diploma in Special Education (CP)

S.No.	Name of the Student	Reg. No (Manipal University)	Amount Received	Scholarship Details
7	Dhamayanthi.C	091700167	Rs.4545.00	SC Scholarship, Dept of Adi-Dravidar, Govt of TN
8	Saranya.M	091700178	Rs.4545.00	SC Scholarship, Dept of Adi-Dravidar, Govt of TN
9	Sureshkannan.P	091700180	Rs.4545.00	SC Scholarship, Dept of Adi-Dravidar, Govt of TN

Diploma in Special Education (ASD)

S.No.	Name of the Student	Reg. No (Manipal University)	Amount Received	Scholarship Details
10	Ramachandran 2008-09	081600023	Rs.4610.00	SC Scholarship, Dept of Adi-Dravidar, Govt of TN
11	Khobragade Mithun Shivcharan	091600167	Rs.11,150.00	SC Scholarship Spl. Dist Welfare Officer, Bhandara
12	Raut Amit Rajender	091600172	Rs.11,150.00	SC Scholarship Spl. Dist Welfare Officer, Bhandara
13	Metange Sushama Dhanraj	091600169	Rs.12,100.00	SC scholarship Spl. District Welfare Officer, Amaravathi
14	Gulsundare Sulochana Ajabrao	091600164	Rs.12,100.00	SC scholarship, Spl. District Welfare Officer, Amaravathi
15	Shambrarkar Rani Raju	091600174	Rs.10,250.00	SC scholarship Spl. District Welfare Officer, Nagpur

Certificate Course in Prosthetic & Orthotics

S.No.	Name of the Student	Reg. No (Manipal University)	Amount Received	Scholarship Details
16	Jayawarathanan.K	090900075	Rs.4545.00	SC Scholarship, Dept of Adi-Dravidar, Govt of TN
17	Senthilkumar.P	091900078	Rs.2675.00	SC Scholarship Dept of Adi-Dravidar, Govt of TN

Annexure – 2

A. Short Term Training Program:

S.No	Name of the Program	Date	Participants
01	Introduction to Speech, Hearing & Communication	02 nd April 09	17
02	Intervention for Children with Deafblindness	09 th April 09	16
03	Counseling for the persons with Multiple Disabled	22 nd April 09	75
04	Empowerment and Management of persons with Multiple Disabilities	28 th -29 th April 09	98
05	Speech & Language development in children with Multiple Disabilities	22 nd May 2009	13
06	Teaching Children with Communication Difficulties	24 th -26 th June 2009	05
07	Obesity – Psychological Perspectives of Management	2 nd -3 rd July 2009	07
08	Program on Management & Empowerment of Persons with Multiple Disabilities at Vijayawada, Krishna District (AP)	14 th -17 th July 2009	41
09	Upper Limb & Hand Rehabilitation related to Multiple Disabilities	27 ^h - 29 th July 2009	12
10	Literacy for Deafblind	3 rd - 7 th Aug 09	05
11	Assisting Children with Speech & Hearing	12 th – 14 th Aug 09	08
12	Functional areas of the brain	7 th – 11 th Sep 09	15
13	Community Based Rehabilitation	14 th -18 th Sep 09	30
14	Multiple Disabilities: Mental Health Perspectives	22 nd -24 th Sep 09	02
15	Holistic Approach towards Management of Persons with Multiple Disabilities	5 th -9 th Oct 09	29
16	Curriculum and Instruction for the Children with Multiple Disabilities	5 th -9 th Oct 09	05



S.No	Name of the Program	Date	Participants
17	Orientation to Sensory Integration Therapy	12 th -14 ^h Oct 09	14
18	Capacity Building of Rehabilitation Professionals working with Persons with Multiple Disabilities, at Manovikas Kendram, Kakinada, Andhra Pradesh	22 nd Oct 09	71
19	Disability Evaluation and Certification for Doctors of Medical Board, Orissa	4 th Nov 09	46
20	Empowerment and Management of Persons with Multiple Disabilities	4 th -5 th Nov 09	168
21	Curriculum and Instruction for Deafblind	9-13 th Nov 09	13
22	Neurologic Rehabilitation optimizing motor performance	16 ^h – 20 th Nov 09	14
23	Behaviour Management & Applied Behaviour Analysis for Autism	07-12 Dec 09	15
24	CBR & Autism, Trichy	14 th -18 th Dec 09	30
25	Curriculum Instruction for Persons with Multiple disabilities, Bhubaneswar, Orissa,	14-18 th Dec 09	30
26	Promoting Literacy: Teaching strategy for Children with Disabilities, Tirupathi, A.P	07-11 th Dec 09	20
27	Curriculum and Instruction for persons with Multiple Disabilities, Nagercoil, Kanniyakumar Dist.	18-22 nd Jan 2010	36
28	Developing Communication skills for children with Multiple disabilities, Ramanathapuram	27-29 Jan 2010	40
29	Understanding Autism & designing need based instructions	1 st – 5 th Feb 2010	07
30	Psycho-Linguistic program for Persons with Multiple Disabilities, Namakkal	17 th -19 ^h Feb 2010	17
31	Therapeutic Approaches for Management of Persons with Multiple Disabilities, Pondicherry.	22 nd – 26 th Feb 2010	19
32	Interventional Strategies for Motor delay, Salem	1 st – 5 th March 2010	19
33	Therapeutic Approaches for Management of Persons with Multiple Disabilities, Coimbatore.	22 nd – 26 th March 2010	27
Total			964

National Institute for Empowerment of Persons with Multiple Disabilities

B. Orientation & Awareness Programs:

S.No	Name of the Program	Date	Participants
01	Awareness program on Multiple Disabilities and counseling for Visually Impairment	20 th May 2009	27
02	Topics on various intervention on Disabilities Management for Holy Cross student and Annamalai University students	07 th May-6 th June 2009	20
03	Orientation program SSA- Inclusive Education training program to School teachers, Puducherry	11 th – 12 th July 2009	132
04	Orientation Program on Multiple Disabilities, (Add-Indian, Trichy) (CBR workers)	16 th July 2009	20
05	Orientation program SSA- Inclusive Education training program to School teachers, Puducherry	18 th – 19 th July 2009	141
06	Orientation Program on Multiple Disabilities (Loyola College, Chennai) (MSW students)	22 nd & 23 rd July 2009	90
07	Orientation program SSA- Inclusive Education training program to School teachers, Puducherry	25 th – 26 th July 2009	74
08	Orientation program SSA- Inclusive Education training program to School teachers, Puducherry	1 st – 2 nd Aug 09	165
09	Orientation program SSA- Inclusive Education training program to School teachers, Karaikal	29 th -30 th Aug 09	216
10	Orientation program SSA- Inclusive Education training program to School teachers, Puducherry	19 th -20 th Sep 09	263
11	Orientation program on Multiple Disabilities for the students of B.Sc & MSc (Psychology)students, Presidency College, Chennai	30 th Sep 09	20
12	Orientation Program on Multiple Disability for MSW students, Loyola College, Chennai	16 th Oct 09	30
13	Orientation program on Multiple Disability for IRCDS Self Help Group, Tiruvallur	20 th Oct 09	70



S.No	Name of the Program	Date	Participants
14	Sensitization training program on Multiple Disability to NIMH students, Secunderabad	3 rd Nov 09	77
15	Sensitization training program on Multiple Disability to trainees of DSE (MR), Vijay Human Service, Chennai	4 th Nov 09	20
16	Sensitization training program on Multiple Disability to trainees DSE (HI), Lucknow	9 th Nov 09	50
17	Orientation program on Multiple Disabilities for Govt. of Tamil Nadu Group – A Officers, Anna Institute of Management Chennai	23 rd Dec 2009	21
18	Orientation program for on Multiple Disabilities for students of AYNIIH, Regional Centre, Secunderabad	18 th Dec 09	19
19	Orientation program on Multiple Disabilities for Doctors of National Institute of Siddha, Chennai	22 nd Dec 09	50
20	Orientation program on Multiple Disabilities for 1 st year MSW students, Holy Cross Colliege	7 th Jan 2010	35
21	Orientation program on Multiple Disabiliites for Regional Training centre, Govt.Hr.Secondary school for the Blind, Poonamalle	29 ^h Jan 2010	18
22	Orientation program on Multiple Disabilities for Opinion Leaders from Karnataka, Ministry of Information & Broadcasting	11 th Feb 2010	18
23	Orientation program on Multiple Disabilities for Opinion Leaders from West Bangal (N) & Sikkim, Ministry of Information & Broadcasting	18 th Feb 2010	17
24	Orientation program on Multiple Disabiliites for Bachelor of Prosthetics & Orthotics Students of SVNIRTAR, Orissa and Govt.Hr.Secondary school for the Blind, Poonamalle	22 nd Feb 2010	28
Total			1621

National Institute for Empowerment of Persons with Multiple Disabilities

C. Parental Training Program:

S.No	Name of the Program	Date	Participants
01	Govt.of Tamilnadu's Schemes & Programs for Persons with Disabilities	24th April 2009	150
02	Income generation program for parents	22nd April 2009	25
03	Effective Management of Persons with Multiple Disabilities	23rd Oct 2009	20
04	Income generation program for parents	Oct 2009	14
05	Empowerment & Inclusion	6th Nov 09	90
06	Management of Children with Disabilities, Schemes and Concessions, Trichy	19th Dec 2009	156
07	Parent training program on Nirmaya Health Insurance scheme	11th Feb 2010	66
08	Parents training program on Various Disability Issues at Parivaar, Krishnagiri	25th Feb 2010	70
09	Acceptance children's with Multiple Disabilities – Problems faced by families and transition planning	10th Feb 2010	81
10	Sensitization program for Parents on Multiple Disabilities, SASR, Faridabad, Haryana	21st Feb 2010	53
11	Parent Training Program on Self care & adaptation, Salem	6th March 2010	25
12	Causes, Prevention & Management of Cerebral Palsy with Mental Retardation, Coimbatore	26th Mar 2010	33
13	Multiple Disability Assessment & Intervention, (VKP), Uthiramerur	19th Mar 2010	64
Total			847



Annexure - 3

a. Faculty Members/officials participated in Workshop/Conferences & Seminars:

S.No	Faculty/Official's Name	Title of the Program	Organiser	Place
01	Dr Neeradha Chandramohan	International Seminar on Empowering Visually Impaired persons through Information Communication Technology (ICT)	Rajiv Gandhi Institute of Information Technology	Amethi
02	Dr.Neeradha Chandramohan	Regional Workshop for Counselors handling Differently Abled Youth	Rajiv Gandhi National Institute of Youth Development	Sriperumbudur, Chennai
03	Sri.A.Amarnath	National Conference on Social Work	Loyola College	Chennai
04	Dr J.Vijayalakshmi	Educational intervention for Children with Deafblindness and Cerebral Palsy	Sense International	
05	Sri. G.D.Bishnoi	Program Co-coordinator Meet	NCDS (IGNOU)	New Delhi
06	Sri.P.S.Srinivas	Job Fair :Disabling Disability	Tamil Nadu Handicapped Federation Charitable Trust & Need Trust	Kamarajar Arangam, Chennai
07	Sri.P.S.Srinivas	National Seminar on Comprehensive Rehabilitation services to Mental Retardation	Nava Jyothi Trust	Chennai
08	Dr.J.Vijayalakshmi	Identification of Physical Disability	SSA	Pondicherry
09	Sri.Rajesh Ramachandran	National Seminar on Comprehensive Rehabilitation services to Mental Retardation	NavaJyothi Trust	Chennai

National Institute for Empowerment of Persons with Multiple Disabilities

S.No	Faculty/Official's Name	Title of the Program	Organiser	Place
10	Dr.J.Vijayalakshmi	National Workshop on Early Intervention	Madhuras Narayan Centre	Chennai
11	Sri.A.Amarnath	CBR, Curriculum development	CBR Network,	Bangalore
12	Sri.A.Amarnath	ICTs for the differently abled communities in Education	Loyola College	Chennai
13	Dr.J.Vijayalakshmi Mrs.B.Leelavathi	Hearing Problems in Hearing impairment	MGR Special School	Chennai
14	Dr J Vijayalakshmi	Neuroupdate 2010	Neurology Association	Chennai
15	Sri.P.S.Srinivas	ISHACON Conference (Chaired the Scientific session)	Speech & Hearing Association	NIMHANS, Bangalore
16	Dr.Neeradha Chandramohan	NACIACP-2010	Indian Association of Clinical Psychologist	NIMHANS, Bangalore
17	Sri.S.Karthikeyan	NACIACP-2010	Indian Association of Clinical Psychologist	NIMHANS, Bangalore
18	Dr J Vijayalakshmy	Advances in Gene Therapy and Ophthalmic Genetics	Narayana Nethralaya	Bangalore.
19	Sri.P.S.Srinivas	National Conference on Early Intervention on Deaf & hard of hearing challenges and achievements	Balavidyalaya The school for Young deaf children & the Institute for Teacher Training	Chennai
20	Shri.P.S.Srinivas	Job Fair	National Trust & SPASTIN	Chennai
21	Dr.J.Vijayalakshmi	Inclusive Education	Amarjyothi, UNICEF & UNESCO	New Delhi.



b. Presentation of papers by Faculties:

S.No	Faculty Name	Title of the Program	Topic	Organizer
01	Dr.Neeradha Chandramohan	International Seminar on Empowering Visually Impaired persons through Information Communication Technology (ICT)	Psychological aspects of coping with Low Vision employing ICT as Medium	Rajiv Gandhi Institute of Information Technology, Amethi
02	Dr.Neeradha Chandramohan	Regional Workshop for Counselors handling Differently Abled Youth	Counseling for the orthopedic ally/ Multiple disability	Rajiv Gandhi National Institute of Youth Development, Sriperumpudur.
03	Dr.Neeradha Chandramohan	National Seminar on Comprehensive Rehabilitation services to Mental Retardation	Adult Independent Living Skills – Infrastructure, Planning & Needs	NavJyothi Trust, Chennai
04	Dr.Tomy, M.K.	National Seminar on Comprehensive Rehabilitation services to Mental Retardation	After work years of Mentally Retarded	NavJyothi Trust, Chennai
05	Dr. Neeradha Chandramohan	World Mental Health day Celebration	Women & Mental Health	Ethiraj College for Women, Chennai
06	Sri.S.Karthikeyan	National Annual Conference of Indian Association of Clinical Psychologists – 2010	Effectiveness of Cognitive behavior therapy in dealing with the anxiety of the parents regarding sexual behavior of Children with Disabilities	NIMHANS, Bangalore.
07	Dr J Vijayalakshmy	Neurouupdate 2010	Discussion of rare cases seen at NIEPMD	Chennai



National Institute for Empowerment of Persons with Multiple Disabilities

(Ministry of Social Justice & Empowerment, Govt. of India)

East Coast Road, Muttukadu, Kovalam Post, Chennai - 603 112.

Tele : 044-27472113, 27472046, Fax : 044 - 27472389

E-mail : niepmd@gmail.com, Website : www.niepmd.tn.nic.in