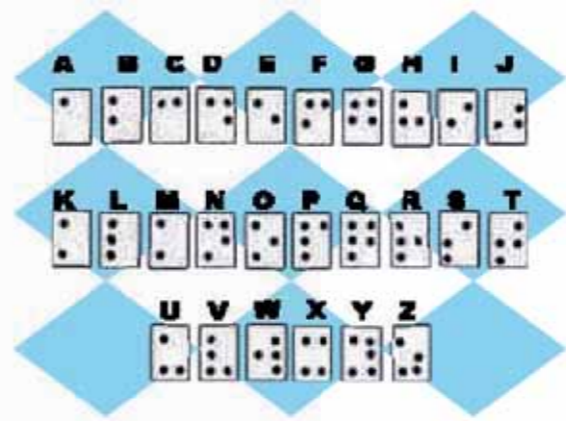
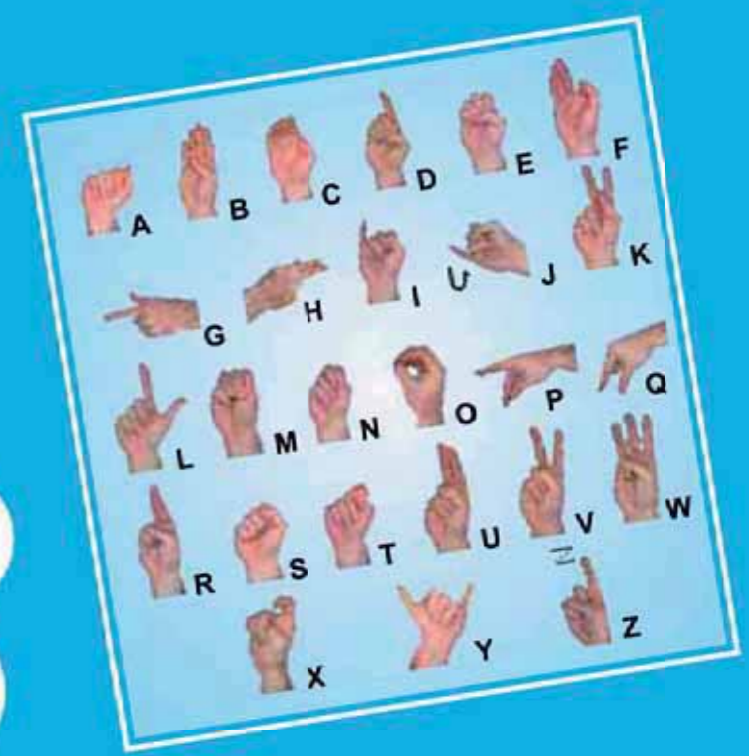




ANNUAL REPORT 2010-11



National Institute for Empowerment of Persons with Multiple Disabilities

[Ministry of Social Justice & Empowerment, Govt. of India]
ECR, Muttukadu, Kovalam, Chennai - 603 112.
Ph: 044-27472113 / 2046 Fax: 044-27472389
Email: niepmd@gmail.com, Web: www.niepmd.tn.nic.in

National Institute for Empowerment of Persons with Multiple Disabilities

[Ministry of Social Justice & Empowerment, Govt. of India]
ECR, Muttukadu, Kovalam, Chennai - 603 112.
Ph: 044-27472113 / 2046 Fax: 044-27472389
Email: niepmd@gmail.com, Web: www.niepmd.tn.nic.in



CONTENTS

Chapter No.		Page No
1	Introduction	01
2	Organizational Structure	06
3	Human Resources Development & Training	08
	3.1. Long Term Training Programs	
	3.2. Short Term Training Programs	
	3.3. Faculties/Officials Participation in Workshops/Conferences & Seminars	
4	Services	18
5	Scheme of Assistance to Disabled persons for Purchase / fitting of Aids / Appliances (ADIP)	43
6	Research & Development	46
7	Important Events	51
8	Other Activities	59
9	Administration	62
10	Audit Report & Annual Accounts	72
11	Annexure	
	i. List of Members of General Council	108
	ii. List of Members of Executive Council	110
	iii. List of Members of Academic Committee	111
	iv. Course Curricula, Objectives of the Course, List of successful candidates passed out with their placement status and Details of various Scholarships received by the trainees during the academic year 2010-11	112
	v. Details of Short-term training programs	126
	vi. List of Faculty Members/Officials Participation in Workshops/Conferences & seminars	131
	vii. The Committee for Monitoring of the construction of new complex at NIEPMD	136
	viii. Office Memorandum of Minutes of Expenditure Finance Committee Meeting	138
	ix. Constitution of Monitoring Committee for the purpose of implementation of Disability related schemes of the Ministry of Social Justice & Empowerment	139

Highlights of NIEPMD Activities during the year 2010-11

National Institute for Empowerment of Persons with Multiple Disabilities under the Ministry of Social Justice & Empowerment, Govt. of India was established at ECR, Muttukadu, Chennai, Tamilnadu, to fulfill the objective of serving as a National Resource centre for empowerment of Persons with Multiple Disabilities such as those with two or more disabilities in one person. The enumerated disabilities as per PWD (1995) Act are. Low vision, Blindness, Locomotor disability, Hearing Impairment, Mental Retardation, Mental Illness, Leprosy Cured persons, and as per National Trust (1999) Act, Cerebral Palsy and Autism. The Institute had carried out various activities for Persons with Multiple Disabilities. The details are as follows.

- ☆ Successful conduction of Southern Regional Workshop on "Role of Stake Holders in Implementing United Nations Convention on Rights of Persons with Disabilities in India" was held on 15 - 16th April 2010 at Chennai.
- ☆ Launched Graduate Degree course B.Ed. Special Education (Multiple Disabilities) approved by Tamil Nadu Teachers Education University.
- ☆ More intake of trainees and professionals in the HRD activities / courses offered by NIEPMD viz. B.Ed. Spl.Edn (Multiple Disabilities) and Diploma in Special Education (ASD, CP, DB) and Training/refresher programmes.
- ☆ Two meetings of Central Monitoring Committee for construction of the new complex of NIEPMD held on 9th July 2010 & 21st October 2010 respectively at NIEPMD, Chennai under the Chairmanship of Shri.K.M.Acharya, Secretary to Govt. of India, MSJ&E.
- ☆ Initiation of activities and proposals to establish a Composite Rehabilitation Centre at Kozhikode, Kerala, to fulfill the objectives of the Ministry.
- ☆ On 13th August 2010 NIEPMD conducted a workshop on "Applied Behavior Analysis-Perspectives" at NIEPMD, Chennai with an objective of exploring various possibilities on starting course on Applied Behavior Analysis.
- ☆ To ensure effective implementation of the recommendations of the UNCRPD, NIEPMD Organized a State Level workshop on title "Effective Implementation of UNCRPD" for District Differently Abled Welfare Officers of Tamil Nadu at Chennai between 22nd and 23rd Oct 2010.
- ☆ With an aim of "Economic Empowerment", the Institute under its scheme on "Income Generation program" conducted "Tailoring and Embroidery Training Course" to the Parents of Children with Multiple Disabilities and upon successful completion of the training, they were given Sewing Machines, which was sponsored by Indian Bank.
- ☆ The Baswan Committee constituted by Ministry of Social Justice & Empowerment, Govt. of India under the Chairmanship of Shri.B.S.Baswan visited NIEPMD on 15th February 2011 for Strengthening of National Institutes as Institute of Excellence.
- ☆ The activities of NIEPMD were appreciated by the Parliamentary Standing Committee on Social Justice & Empowerment, constituted by the Cabinet Secretary, Govt. of India consisting of 25 Members of Parliament both from Rajya Sabha & Lok Sabha and 4 officers of Lok Sabha secretariat during their visit to the Institute on 18th February 2011.
- ☆ To ensure effective publicity and creating awareness, NIEPMD effectively took part in the Publicity Campaigns organized by the PIB - through Bharat Nirman Public Information Campaign in various districts of Tamil Nadu.
- ☆ NIEPMD participated the exhibition "Shilpotsav - 2011" organized by National Backward Class Finance & Development Corporation, New Delhi at Island Ground, Chennai from 1st January - 15th February 2011. Hon'ble Minister Shri.Mukul Wasnik, MSJ&E, and Hon'ble Minister of State Shri.D.Napoleon visited the stall and distributed the Aids and Appliances to the eligible beneficiaries.
- ☆ NIEPMD and The Spastic Society of Tamil Nadu, Chennai jointly organized the State consultation meeting on "Working draft for Persons with Disabilities Act" at Chennai from 9 - 10th March 2011.



Chapter 1

Introduction - Overview

Multiple Disabilities is defined as any additional disability existing with another core disability being experienced by the same person as mentioned in clause (h) of Section 2 of National Trust (1999) Act. Examples of Persons with Multiple Disabilities are mental retardation with hearing impairment, mental retardation with visual impairment, deafblind, mental retardation with cerebral palsy, etc.

Person who has the condition of multiple disabilities undergo a stressful life due to various challenges in his/her functional capacity, thus limiting his activities of daily living, interaction with environment and society. Existing services for the persons with multiple disabilities are very few in the country. There are only few non-governmental organizations working for the welfare of Deafblind and other categories of multiple disabilities. Coverage of programs and activities of relevance to person with multiple disabilities is thus very limited. Past experiences has shown that early detection and intervention programs, educational and rehabilitative measures have significantly improved the quality of life of persons with disabilities.

Keeping in view the growing magnitude and limited services available in the country in the field of multiple disabilities, a National Institute was established based on the decision of the Cabinet Committee for Economic Affairs (CCEA) during its meeting on 29th March 2005. The National Institute for Empowerment of Persons with Multiple Disabilities (NIEPMD) was registered under the **Tamil Nadu Societies Registration Act, 1975 (Tamil Nadu Act 27 of 1975) vide SI.No.59/2006 dated 23rd October 2006**. NIEPMD was inaugurated by the Hon'ble Minister of State for Social Justice & Empowerment, Govt. of India Smt.Subbulakshmi Jagadeesan on **7th July 2005**. This Institute has been established to serve as a national resource centre for empowerment of Persons with Multiple Disabilities as defined in Persons with Disabilities (Equal Opportunities, Protection of Rights and Full Participation) Act, 1995 and National Trust (Welfare of persons with Autism, Cerebral Palsy, Mental Retardation and Multiple Disabilities) Act 1999. NIEPMD is the only Government run Institute in the entire continent of Asia, serving exclusively for the empowerment of Persons with Multiple Disabilities.

Table1: State wise Population of Single Disability* and Multiple Disabilities**

Sl.No	State/UT	Visual Disability	Speech Disability	Hearing Disability	Loco-motor Disability	Mental Disability	Total	Approx. No. of PWMDs#
1	Uttar Pradesh	1852071	255951	128303	930580	286464	3453369	367093
2	Bihar	1005605	130471	73970	512246	165319	1887611	200653
3	West Bengal	862073	170022	131579	412658	270842	1847174	196355
4	Tamil Nadu	964063	124479	72636	353798	127521	1642497	174597
5	Maharashtra	580930	113043	92390	56945	213274	1569582	166847
6	Rajasthan	753962	73147	75235	400577	109058	1411979	150093
7	Madhya Pradesh	63614	75825	85354	495878	115257	1408528	149726
8	Andhra Pradesh	581587	138974	73373	415848	155199	1364981	145097
9	Gujarat	494624	66534	70321	310765	103221	1045465	111133
10	Orissa	514104	68673	84115	250851	103592	1021335	108568
11	Karnataka	440875	90717	49861	266559	92631	940643	99990
12	Kerala	334622	67066	79713	237707	141686	860794	91502
13	Assam	282056	56974	51825	91970	47475	530300	56371
14	Haryana	201358	24920	27682	151485	49595	455040	48371
15	Jharkhand	186216	39683	28233	138323	55922	448377	47662
16	Punjab	170853	22756	17348	149758	63808	424523	45127
17	Chhattisgarh	160131	30438	34093	151611	43614	419887	44634
18	Jammu & Kashmir	208713	16956	14157	37965	24879	302670	32174
19	Uttarakhand	85668	16749	15990	56474	19888	194769	20703
20	Himachal Pradesh	64122	12762	15239	46512	17315	155950	16577
21	Tripura	27505	5105	5699	13970	6661	58940	6265
22	Arunachal Pradesh	23079	2429	3072	3474	1261	33315	3541
23	Meghalaya	13381	3431	3668	5127	3196	28803	3062
24	Manipur	11713	2769	2994	6177	4723	28376	3016
25	Nagaland	9968	4398	5245	4258	2630	26499	2817
26	Sikkim	10790	3174	3432	2172	799	20367	2165
27	Mizoram	6257	2006	2421	2476	2851	16011	1702
28	Goa	4393	1868	1000	4910	3578	15749	1674
Union Territories								
29	Delhi	10712	15505	8741	64885	26043	235886	25075
30	Pondicherry	10646	1818	2277	8830	2286	25857	2748
31	Chandigarh	8422	882	607	3828	1799	15538	1651
32	A & N Islands	3321	652	545	1870	669	7057	750
33	D & N Haveli	2346	295	337	795	275	4048	430
34	Daman & Diu	1898	189	120	690	274	3171	337
35	Lakshadweep	603	207	147	505	216	1678	178
	Total	10634881	1640868	1261722	6105477	2263821	21906769	23,28,684

* As per census 2001 ** Estimated @ 10.63% of total Disabled population as per NSSO survey 2002

PWMDs – Person with Multiple Disabilities

The Vision, Mission, and Value statement of NIEPMD was approved by the Executive Council in its 5th meeting held on 14th November 2008, is as under :-

VISION

Persons with Multiple Disabilities have equal rights to lead a better quality of life. This may be enabled with committed professionalism, accessible environment, equal opportunities, positive attitudes and appropriate, affordable, acceptable and available technological interventions.

MISSION

To provide need based comprehensive rehabilitation through team approach facilitating inclusion, ensuring empowerment of persons with Multiple Disabilities and their families and by substantiating field based research and development of human resources.

VALUE STATEMENT

Promoting quality of life for persons with Multiple Disabilities, through equal participation of clients, families, professionals and community agencies.

Chapter 2

Organizational Structure

National Institute for Empowerment of Persons with Multiple Disabilities is an Autonomous body under the Ministry of Social Justice & Empowerment (MSJ&E), Govt. of India registered under **The Tamil Nadu Society Registration Act 1975 (Tamil Nadu Act 27 of 1975)** bearing Registration No: 59/2006 dated 23rd October 2006.

The Secretary, MSJ&E, is the President of General Council (GC) and Joint Secretary (Disability Division) is the Chairperson of the Executive Council (EC). The Director, NIEPMD carries out the activities of the Institute under the guidance of the GC and EC.

2.1 The General Council: This Council guides and monitors the overall functions of the Institute. The 4th Annual General Council meeting of NIEPMD was held on 3rd March 2011 at Shastri Bhawan, New Delhi. The composition of the General Council is given in **Annexure 1 (Page No.108)**.

2.2 The Executive council: This Council Executes and directs all activities of the Institute under the control and direction of the General Council. The 9th and 10th Executive Council meeting was held on 28th July 2010 & 21st October 2010 at IPH, New Delhi and NIEPMD, Chennai, respectively during the year 2010-11. The composition of the Executive Council is given in **Annexure 2 (Page No.110)**.

The Director as the Head of the Institution heads the Administration and Technical wings. The Administrative wing comprises of the following posts viz, Deputy Registrar, Accounts Officer, Information & Media Officer and Program Assistants. The Technical Wing comprises 6 departments, namely

1. Department of Physical Medicine and Rehabilitation
2. Department of Special Education
3. Department of Rehabilitation Psychology
4. Department of Adult Independent Living
5. Department of Speech, Hearing & Communication and
6. Department of Community Rehabilitation and Project Management

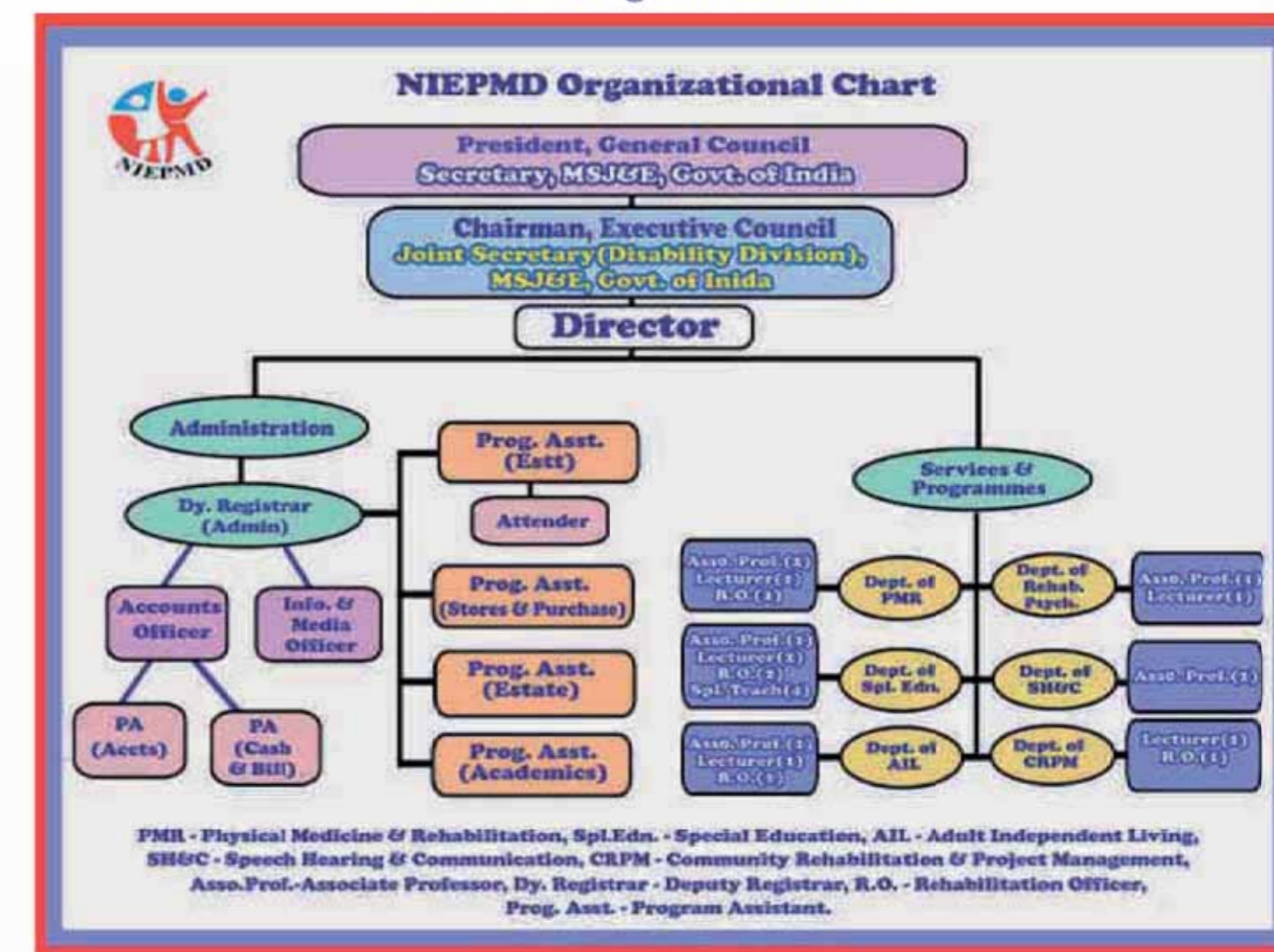
Each department comprises an Associate Professor, Lecturer, Rehabilitation Officer and Department of Special Education along with the above mentioned posts has Special Teachers to run the model special school called

The following table shows details of sanctioned post filled & vacant

S. No	Name of the Post	Sanctioned	Held	Vacant
1.	Director	01	01	00
2.	Deputy Registrar (Admn)	01	00	01
3.	Associate Professor	06	04	02
4.	Accounts Officer	01	00	01
5.	Lecturer	06	06	00
6.	Info. & Media Officer	01	01	00
7.	Rehabilitation Officer	06	06	00
8.	Program Assistant	06	06	00
9.	Spl. Education Teacher	04	04	00
Total		32	28	04

Note: (i) One Post of Group - D (Peon) has been transferred along with the post from NIHH, Mumbai

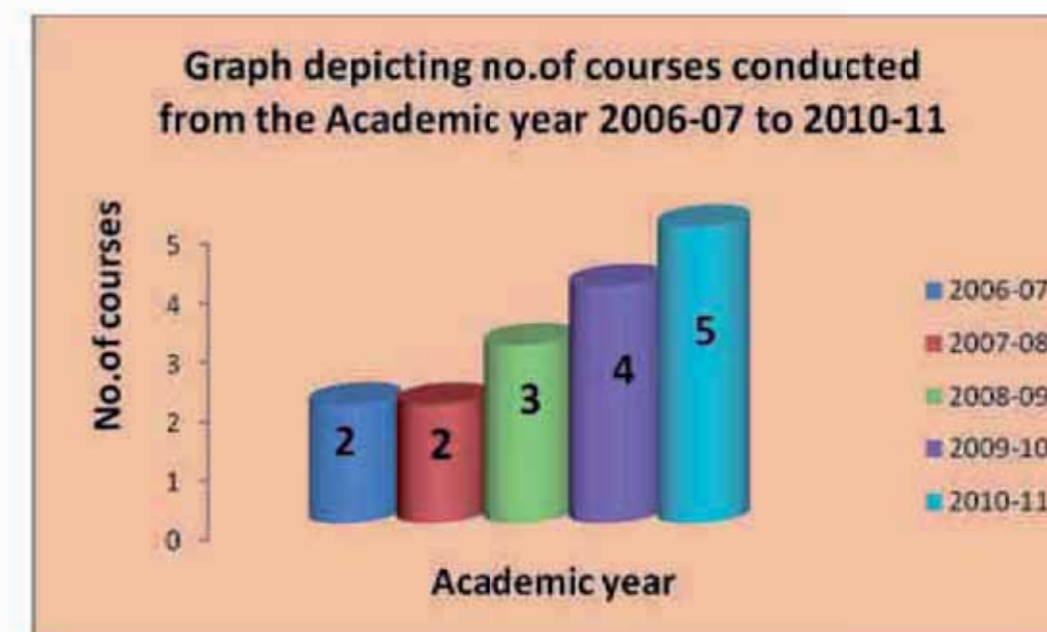
NIEPMD Organizational Chart



Chapter 3

Human Resource Development & Training

NIEPMD being the national resource centre for persons with multiple disabilities, which focuses more on development for curriculum on long term and short term courses to generate more manpower for the empowerment of persons with multiple disabilities. NIEPMD started Human Resource Development (HRD) programs to stimulate the growth of services for these marginalized groups. In the year 2006, two HRD programs Viz. Diploma in Special education (Cerebral Palsy) and Diploma in Special Education (Deafblind) were launched with ten seats in each course. These courses are recognized by Rehabilitation Council of India, New Delhi. The Diploma in Special Education (Autism Spectrum Disorder) was started in the year 2008, and a certificate course in Prosthetics and orthotics was added in the year 2009-10. During the academic year 2010-11 curriculum on B.Ed- Spl.Edn(Multiple Disabilities) was framed by faculty of NIEPMD. The curriculum was approved by Rehabilitation Council of India, New Delhi and accepted by the Tamil Nadu Teachers Education University (TNTEU), Chennai in their Board of Studies and Senate. The Degree is being awarded by the Tamil Nadu Teachers Education University. Accordingly the first batch of B.Ed-Special Education (Multiple Disabilities) course offered at NIEPMD from the academic year 2010-11. In addition, NIEPMD has been chosen as one of the study centre for Distance education of IGNOU. Subsequently, the certificate course on Early Childhood Special Education Enabling Inclusion (Cerebral Palsy) through Distance Education has been started from the year January 2009.



3.1 Long Term Training Programs:

To cater the needs of persons with multiple disabilities, the following long term courses were offered at NIEPMD during the academic year 2010-11:

Table 3: Trainees enrollment during the year 2010-11

Sl.No	Name of the Course	Duration	No. of Applications Received	Sanctioned intake	No of students enrolled	No of students Passed / Success %
1	Bachelor in Special Education (Multiple Disabilities)	1 year	25	20	17	15 (88%)
2	Diploma in Special Education (Autism Spectrum Disorder)	1 year	30	25	20	20 (100%)
3	Diploma in Special Education (Cerebral Palsy)	1 year	31	25	24	22 (92%)
4	Diploma in Special Education (Deafblind)	1 year	26	25	25 (1 discontinued as she got a Govt job).	24 (100%)
5.	Certificate Course in Prosthetics & Orthotics	1 year	--	10	---	---
6.	Certificate course in Early Childhood special Education (CP) enabling inclusion	02 years (through distance mode)	No limitation	Not specified	19	---



ADMISSION PROCEDURE

During the academic year 2010-11, RCI had introduced All India Online Entrance Examination for admission of students to Diploma Courses. Accordingly admission notification with the details of intake, eligibility and duration of the course was published in The Hindu (All India Edition) and Daily Thanti (Tamil Nadu edition) but the response for the All India online Entrance from the students was not as expected hence RCI, instructed all training centres to fill up the vacant seats by following the usual pattern of admission (ie.) through interview method.

Accordingly, the admission notification was uploaded in NIEPMD website. The response from the students was good; the applications received were scrutinized and called for interview. Provisionally selected students for Diploma and B.Ed courses were asked to take admission before 2nd August 2010 and 4th September 2010 respectively.

ADMISSION CRITERIA

Marks obtained in the qualified examinations	50 marks
Higher qualification	10 marks
Experience (minimum of 2 years)	10 marks
Parent / siblings / ward of PWD	10 marks
Interview	20 marks
Total	100 marks

RESERVATION OF SEATS:

Reservation of seats for each category as per the policy of Government of India was followed for Diploma courses and Tamil Nadu Teachers Education University (TNTEU) of Madras norms for B.Ed-Spl.Edn(MD) programme.

PANEL MEMBERS FOR SELECTION OF STUDENTS:

DIPLOMA & B.Ed COURSES:

1. Dr.Neeradha Chandramohan, Director – NIEPMD
2. Shri.E.Dasarathan, Director, National Commission for SC & ST
3. Prof. Jeyachandran – Field Expert
4. Dr.Tomy, Assistant Professor – NIEPMD
5. Shri.G.D.Bishnoi, Assistant Professor - NIEPMD
6. Shri.P.Kamaraj, Lecturer – NIEPMD (Rep SC/ST) & Course Co-ordinator
7. Shri.B.K.Santhosh Kanna, Lecturer - NIEPMD & Course Co-ordinator
8. Shri.S.Karthikeyan, Lecturer – NIEPMD & Course Co-ordinator
9. Smt.B.Leelavathi, Lecturer – NIEPMD & Course Co-ordinator

Table 4: Fee structure of the course

S.No	Particulars	B.Ed.Spl.Edn (Multiple Disabilities)	DSE (D5)	DSE (CP)	DSE (ASD)
01	Tuition Fee	7500	5000	5000	5000
02	Laboratory fee	1000	500	500	500
03	Students Activities/cultural/recreation	1000	1000	2000	1000
04	Caution Deposit (refundable)	1000	1000	1000	1000
05	Handouts/Material/ calendar fee	750	500	500	500
06	Medical Insurance	400	400	400	400
07	Mid term/Stationary fee	200	100	100	100
08	Medical Checkup fee	50	50	50	50
09	Identity card fee	50	50	50	50
10	Examination fee				
	Total	11950	8600	9600	8600

The details of the above mentioned course curricula, Objectives of the course and the list of successful candidates passed out with their placement status are in Annexure 4(Page No.112).

3.1.1. B.Ed. Special Education (Multiple Disabilities)

This course is designed to enable the professionals to develop the necessary skills, abilities, knowledge to meet the physical, educational, social and emotional needs of persons with multiple disabilities. It also provides training and study opportunities for teachers to work with multiple disabilities. The knowledge obtained during this course of study will enable the Teacher trainees to prepare themselves as teachers in inclusive / integrated setup (normal school) as well as in special schools.



B.Ed. Special Education (Multiple Disabilities) – 2010-11

3.1.2. Diploma in Special Education (Cerebral Palsy)

The course is designed to train person, who are committed to work with children having neurological disabilities. The course structure provides for a comprehensive understanding of the various needs and deeds of children with neurological disabilities in special schools and ordinary school. There are very few courses in the country to train and educate children with neurological disabilities, especially Cerebral Palsy. This course has been designed to meet the educational objective of our country.



Diploma in Special Education (CP) – 2010-11

3.1.3. Diploma in Special Education (Deafblind)

The one year diploma course is aimed at preparing special teachers, who would be competent in screening, performing educational assessment and implementing programs, including teaching, training and management of children with Deafblindness. The basic objective is to provide first hand experience to the trainees about the implications, emerging trends, assessment and intervention strategies with respect to Deafblindness.



Diploma in Special Education (Deafblindness) – 2010-11

3.1.4. Diploma in Special Education (Autism Spectrum Disorder)

This course is designed to train the teacher trainees who are committed to work with children diagnosed with Autism Spectrum Disorders. The course structure provides a comprehensive understanding of the various needs of children with Autism Spectrum Disorders and their needs in special schools and regular schools.



Diploma in Special Education (Autism Spectrum Disorder) – 2010-11

Differently abled students were also given opportunity to undergo Diploma and Degree courses at NIEPMD. Special permission has been obtained from Rehabilitation Council of India, New Delhi for Mr. Mahadevan, a student diagnosed as Deafblind, to undergo Diploma in Special Education (Deafblind). Various equipments and additional assistance have been provided to him according to their needs to undergo long term courses. Following are differently abled students who have undergone different courses during the academic year 2010-11:

Table 5: List of Differently abled students joined the Long term courses

Sl.No	Name of Student	Course	Category
1	Ms. Ragini.N	B.Ed-Spl.Edn(MD)	Hearing Impaired
2	Ms. Shaik Gulzar	B.Ed-Spl.Edn(MD)	Locomotor disability
3	Mr. Mahadevan	DSE(Db)	Deafblind
4	Mr. Bhat Nilesh Surajlal	DSE(Db)	Visually Impaired

5	Ms. Mahalakshmi, M	DSE(Db)	Visually Impaired
6	Mr. Mehar Damodar Mahadeo	DSE(Db)	Visually Impaired
7	Ms. Vinnarasi, A	DSE(Db)	Locomotor disability
8	Mr. Muniyappan, P	DSE(ASD)	Locomotor disability
9	Ms. Ranemma, C	DSE(CP)	Locomotor disability
10	Ms. Sathiya Devi, D	DSE(CP)	Cerebral Palsy – Locomotor disability

Parents & siblings of persons with special needs have got an opportunity to undergo long term courses to take care of their own ward also to serve the society. Following are parents who have undergone various long-term courses during 2010-11:

Table 6: List of Parents & siblings of persons with special needs joined Long

Sl.No	Name of Student	Course	Relationship with PWDs
1	Smt. Revathi,B	B.Ed-Spl.Edn(MD)	Parent, Child having ASD+MR
2	Ms. Priskilal	B.Ed-Spl.Edn (MD)	Sister – CP+MR
3	Mr. Prasannakannan, N	DSE(CP)	Brother - Down Syndrome

3.2. Short Term Training Programs

The short term training programs are designed for in-service training the professionals and personnel working in the field of rehabilitation to meet their continuing training needs. The Institute also conducts training program for parents of children with Multiple Disabilities, who are integral part of the rehabilitation program, for providing better rehabilitation services to their wards.

During the year 2010-11, the Institute had conducted 88 programs including Training Programs for professionals in the field of Rehabilitation, Orientation and Awareness programs for Parents, Teachers and Students (normal students). A total of 3912 participants were benefited.

Table 7: Short term Orientation Training Programs

S.No	Program	No of Program	No of Participants
1	Short term Training Program	31	1765
2	Orientation & Awareness Program	35	1543
3	Parental Training Program	22	604
	Total	88	3912



Short Term Training program on various aspects of Multiple Disabilities to the Rehabilitation Professionals, at CRC, Bhopal



Parent Training program on Needs & Deeds of Persons with Multiple Disabilities

The details of all the above mentioned training programs are in Annexure 5 (Page No.126).



3.3 Faculty Members/Officials participation in Workshop / Conference & Seminars:

Apart from conducting different programs for developing the human resources in the field of Rehabilitation, the Institute also supports and encourages the Faculty of NIEPMD to participate in various conferences/workshops & training programs conducted at different parts of country for updating their knowledge. The list of the faculty members who participated in the workshops / conferences / seminars is in the **Annexure 6 (Page No.131)**.

Chapter 4

Services

4.1 Services

The Institute undertakes assessment and evaluation covering case history taking, physical and medical examination, intellectual and developmental assessment, special educational assessment, therapeutic needs assessment and vocational assessment. The Neurological screening and examination is also being carried in consultation with the Govt. General Hospital, Chennai. Apart from the above mentioned services, special clinics for Neurology, Psychiatry and Dentistry are carried out on a monthly basis.



Registration of Clients

During the year, 329 clients with Multiple Disabilities and 635 clients with Single Disabilities were registered in the year 2010-11 with a total of 964 clients. The unit also maintains case records, which are data based. The details of clients attending the follow up services are also maintained.



Table 8: Clients registered with NIEPMD along with the combinations

S.No	MD classification	2009-10	2010- 11
1	CP + MR	129	165
2	ASD + MR	26	32
3	CP+MR+VI+HI	03	07
4	MR + LV	03	13
5	MR + HI	23	23
6	MR + LD	02	04
7	MR+VI+HI	01	04
8	CP+MR+LV	05	12
9	CP+MR+VI	04	11
10	CP + HI	03	03
11	HI + LV	01	02
12	MR+HI+LV	01	02
13	LD + HI	00	04
14	MR + VI	05	09
15	CP + LV	02	01
16	VI + HI	10	03
17	LD + VI	01	02
18	ASD + LV	00	01
19	CP+MR+HI	00	08
20	DB	00	03
21	MR+LD+LV	00	01
22	CP + VI	08	03
23	LV + VH	01	00
24	MR + MI	10	14
25	CP+MR+ASD	05	00
26	VI+ASD+LD	03	00
27	LV + LD	02	01
28	LV+ASD+MR	01	00
29	HI+CP+MR	01	00
30	MR+ASD+CP	01	00
31	CP+MR+HI+LV	01	00
32	MI + HI	01	00
33	CP +VI+HI	00	01
	Total	253	329

Key : CP- Cerebral Palsy, MR- Mental Retardation, ASD – Autism Spectrum Disorder, VI – Visual Impairment, HI – Hearing Impairment, LV – Low Vision, LD – Locomotor Disability, MI – Mental Illness, DB – Deafblind)



Table 9 : No. of Persons with Multiple disabilities benefited in the year 20010-11

S.No	Mode	No. of Clients	
		2009-10	2010-11
1	Centre based	253	329
2	Extension service*	717	863
3	Mobile Service**	28	125
	Total	998	1317

* SRTC page no.38 ** Mobile service page no.36

Table 10: Single Disability clients registered at the Centre during the year 2010-11:

S.No	Category	Total
01	OH	43
02	MR	144
03	HI	65
04	VI	10
05	CP	34
06	LD	177
07	MI	38
08	Medical	69
09	PDD	02
10	ASD	10
11	Speech Impaired	06
12	Slow Learner	13
13	Border Line Intelligence	03
14	LV	01
15	Others (Learning Disability & ADHD, etc)	20
	Total	635

(OH- Orthopedically Handicapped, ADHD – Attention Deficit Hyperactive Disorder, PDD – Pervasive Development Disorder)

4.2 Various Departments

4.2.1 Department of Physical Medicine and Rehabilitation:

This department consists of Medical Rehabilitation, Early Intervention, Physiotherapy, Occupational Therapy, Prosthetics & orthotics material development. After registration the clients are examined by the Medical professionals and diagnosis is made. Later the client has been referred the services based on their needs. Special clinics like Neurology, Ophthalmology, Psychiatry and Dental are conducted on specific days in a month. The clients requiring further investigations and treatment are referred to Government Hospitals at Chennai. Anti epileptic and anti psychiatric drugs are issued to clients who have registered at NIEPMD.

The number of clients benefited during the year 2010-11 are as follows.

New Cases			Follow up sessions		
Single Disability	Multiple Disabilities	Total	Single Disability	Multiple Disabilities	Total
404	329	733	222	551	773



Physiatrist examining a Child with disability

Rare cases reported during the year 2010-11 as follows:

Miller-Dicker Syndrome:

In this, a child will have small sized head (Microcephaly), fits, inability to take feeds, failure to thrive, sensory and motor problems. In this syndrome there is deficiency of an enzyme in the body that leads to defect in utilization of food. The Special services arranged at NIEPMD are as follows.

Special services	No. of clients		Total	Conditions
	M	F		
Neurological clinic	103	52	155	Epilepsy and Cerebral Palsy
Ophthalmology clinic	22	06	28	Cataract, Opacity of cornea and Amblyopia
Dental clinic	125	111	236	Caries and gum infections
Psychiatry clinic	37	49	86	Mild neurosis and Schizophrenia
Pharmacy (Medicines provided)	29	40	69	Anti epileptic and psychiatric medicines

4.2.2. Unit for Early Intervention:

Any Child with developmental delay if detected early and given intervention before 3 years of age can progress well in all areas of development due to the plasticity of the brain. The clients below 3 years are assessed mainly in 6 areas of intervention namely motor(muscles), sensory, cognition, Language and communication, social and emotional developments. The programs are planned according to their needs. The special techniques like use of herbal massage, ice therapy(Cryotherapy), breathing exercises using spacer, visual stimulation, resonance board and 'Be-active box' are utilized for early development. The number of clients benefitted during the year 2010-11 are as follows.

Male	Female	No. of Clients
44	24	68



Early intervention assessment being done for a client with Multiple disabilities

4.2.3 Physiotherapy Unit:

Physiotherapy department provides services for clients with Cerebral Palsy, developmental Disabilities and other clients with orthopaedic disabilities like Spinal cord injuries, muscular dystrophy, traumatic brain injuries – paraplegia & quadriplegia, Spina bifida etc.

This department aims at improving functions and developing activities of daily living. The clients are assessed for the function of Musculoskeletal, Neurological, Cardiovascular and Pulmonary systems and they are provided with age appropriate goals which are concerned with achieving and restoration of their functions. These goals are reviewed periodically and new goals are set to achieve their maximum potentials. Regular follow-ups are provided.

Neuro developmental Therapy, Rood's Approach, Temple Fay's approach, and other exercise protocols are given to the client and different equipments are used for therapeutic approach like the Therapy ball, Prone wedge, curb and ramps, walls ladders, Activity mattress etc. Tone inhibition tapping which helps in reducing muscle tone and facilitate movements is also used.



Physiotherapist given exercise to the Client with Multiple Disabilities

Once the client achieves the level of walking, a proper gait training is given to the client with help of parallel bar and postural mirror. Gait parameters are controlled and monitored during treadmill training. Treadmill is used to enhance the quality of walking not only for persons with locomotor impairments but also to clients with deafblindness, autism spectrum disorders, hyperactive disorders etc. This Training achieves its Holistic dimension by home program given to the clients with prescribed Exercise and proper splinting. Client education, Parent education and care giver education is an inseparable part of our treatment protocol which make parents as Co-therapist in achieving the mile stones of the client, as well as to the field of rehabilitation.

Availability of electrotherapy equipment is an added advantage for clients with Orthopaedically Handicapped with additional disabilities i.e.(OH with HH, OH with VI etc), Pulmonary rehabilitation is provided to improve pulmonary function, reduce pulmonary infection and increase endurance of the client. Rebound therapy a specialized technique which is provided to the clients where activities are given on a trampoline to improve balance, coordination, reduce muscle tone and facilitate movements. Research activities have been initiated to study the pulmonary function, effects and need of pulmonary rehabilitation for children with Cerebral Palsy.

The number of clients benefited during the year 2010-11 are as follows.

New Cases			Follow up sessions		
Single Disability	Multiple Disabilities	Total	Single Disability	Multiple Disabilities	Total
204	265	469	796	2190	2986

4.2.4 Occupational Therapy Unit

Occupational therapy services aims to improve the client's independence in activities of daily living skills. We provide our services and achieving our goals through client's participation in purposeful and productive activities. In



Occupational Therapist given therapy to the client

the occupational therapy unit, services are provided for clients with cerebral palsy, Mental Retardation, Autism, Deafblind, Attention deficit disorder, Attention deficit hyperactivity disorder, Neurological disorders, Psychiatric conditions and multiple disabilities.

The Occupational therapy unit mainly focuses to improve clients work, leisure and play areas, improving the functional abilities of both gross & fine motor skills, facilitating developmental milestones, enhancing their cognitive-perceptual skills and activities of daily living skills. Clients attending Occupational therapy services are subjected to initial evaluation, followed by goals setting and treatment implementation. Regular monitoring of progress of the clients is documented. Prescription of Splint & adaptive devices for clients with neurological impairment is also done. Achievable goals of individual clients are met through Occupational therapy services.

The number of clients benefited during the year 2010-11 are as follows:

New Cases			Follow up sessions		
Single Disability	Multiple Disabilities	Total	Single Disability	Multiple Disabilities	Total
150	268	418	1184	2321	3505

4.2.5 Prosthetic and Orthotic Unit



Fitment of upper limb prosthesis to a client

Orthotics and Prosthetics unit is working for Persons with Disabilities who needs the different type of assistive devices to perform their day to day activities in an efficient way. The assistive devices helps them to improve their functional skills and quality of life in the society. This unit also caters good quality of assistive devices as per the requirement of the user (PwDs).

Carpentry unit was started which are meant for designing, fabrication and manufacturing of custom made seating devices for example – Toilet cut out seat, head and neck support devices, lap board for table top activities, etc.

The detail of clients benefited during the year 2010-11 are as follows:

New Cases			Follow up sessions		
Single Disability	Multiple Disabilities	Total	Single Disability	Multiple Disabilities	Total
189	127	316	301	226	527

4.3 Department of Rehabilitation Psychology:

Psychological assessment services are carried out on a regular basis for new as well as for the follow up clients. Assessments include intellectual and behavioural components of persons with multiple disabilities, Specific learning



Psychiatrist counseling the parent of person with Disability

disabilities, emotional problems, personality and psychopathological aspects. Neuropsychological assessments are also carried out to individuals with brain lesions due to head injuries.

Parents / family members of persons with disabilities are counseled regarding the condition of their wards and emphasized the importance of rehabilitation program. They are also highlighted and encouraged to be as a partner in the rehabilitation program so as to improve the quality of life of person with disabilities.

Psychological Interventions are planned based on the results of detailed psychological assessments. Factors related to family & financial condition, accessibility to the department, severity of the condition etc. were considered before starting intervention programs. Major forms of psychological management procedures used in the department include behavior management, play therapy, cognitive behavior therapy, family therapy, social skills training and neuropsychological rehabilitation. The details of clients benefited during the year 2010-11 are as follows.

New Cases			Follow up sessions		
Single Disability	Multiple Disabilities	Total	Single Disability	Multiple Disabilities	Total
326	301	627	448	299	747

4.4. Department of Special Education:



Person with Disabilities given training at Special School

The Department of Special Education plays a vital role in rehabilitating the persons with disabilities. It holds the responsibility of developing appropriate service delivery model for persons with multiple disabilities. The preparation of human resource development to train the children with multiple disabilities is another important role of this department. The department of special education carryout the program of research and development such as development of functional assessment check list for programming of children with multiple disabilities, autism and deafblind. Preparation of teaching learning materials and adaptive devices to facilitate the functions of persons with multiple disabilities is part of the program of department of special education. Facilitation of inclusive education and to develop the training modules for in service teachers and other professionals to carry out the task of inclusive education is also one of the programs of department of special education



Special Teacher trains Children with Disabilities at Special School

The number of clients benefitted during the year 2010-11 are as follows.

New Cases			Follow up sessions		
Single Disability	Multiple Disabilities	Total	Single Disability	Multiple Disabilities	Total
101	320	421	162	466	628

Model school for persons with multiple disabilities is established to provide the services in the school atmosphere. The school registers only the children with multiple disabilities of different combinations. The program of each child carried out in the school is well informed to the parents through conducting parent teacher meeting.

The model school is also working as lab for the teacher trainees of HRD program to do their practical and to conduct research in the area of multiple disabilities. The teacher - student ratio has to maintain at 1:4 and this atmosphere requires more special attention and facilities. About 107 children with disabilities enrolled in the model school during the year 2010-11.



Unit for Early Childhood Special Education:

Here the special educator focuses on school readiness program toward inclusion of the child into the main stream/ Special schools. Children below 6 years are given training on self help skills, language & communication and cognition. There are 27 clients enrolled in this unit during the year 2010-11. The combination of disabilities are as

Combination of Disabilities	M	F	No. of clients
CP + Developmental Delay	21	03	24
AU + Developmental Delay	02	01	03
Total	23	04	27



Early Childhood Special Education Classroom

Unit for Cerebral palsy with additional disabilities:

This unit has three class rooms, Primary, Secondary and Pre-vocational. The primary class admits children of the age group 7-10 years and they are trained in functional skills. In the Secondary class room children between the age group 11-14 years are trained in functional areas including academic and domestic skills. Pre-vocational class room admits children above 14 years of age and they are prepared for taking up different vocation trades. 42 clients were enrolled in this unit. The combination of disabilities are as follows

Combination of Disabilities	M	F	No. of clients
CP + MR	18	08	26
CP + LV	01	02	03
MR + Motor delay	12	01	13
Total	31	11	42



Unit of Cerebral Palsy with additional Disabilities class room

Unit for Deafblind with additional disabilities:

This class is unique as each person with Deafblindness is different from the other as the degree of visual and hearing impairment varies and because of associated problem that interferes with the development. The three major areas that are given importance are communication, information processing, orientation and mobility. These children are also grouped into early intervention, functional academics, transition, and vocational groups. Special strategies are used to develop communication. Tactile mode along with residual vision and hearing helps to explore and learn from the teacher. Peer tutoring helps in the development of self help skills and academics. Lots of real life experiences are given. There are 16 clients enrolled in this unit. The combination of disabilities are as follows.



Tactile Stimulation to the client with Multiple Disabilities

Combination of Disabilities	M	F	No. of clients
HI + VI + MR	11	03	14
VI + HI	01	--	01
HI + MR	01	--	01
Total	13	03	16



Special Teacher trains the client at Special school

Unit for Autism with additional disabilities:

Children with Autism Spectrum Disorder and additional disabilities are trained to develop communication, socialization and play with their peers. Special techniques like behavior modification and sensory integration therapy are used to control unwanted movements and mannerisms. There are 22 students with ASD associated with Mental Retardation enrolled in this unit. The combination of disabilities are as follows.

Combination of Disabilities	M	F	No. of clients
ASD + MR	11	07	18
ASD+ HI+MR	03	01	04
Total	14	08	22



Special Teacher trains a client with Autism at Special School

4.5. Department of Speech, Hearing & Communication:

Communication is the interactive exchange of information, ideas, feelings, needs and desires. Language is a formulated code that a group of people use to communicate with one another. Speech is the oral production of language.

Communication disorder is an impairment in the ability to receive, send, process and comprehend concepts of verbal, non-verbal and graphic symbols systems.

The department provides service to children and adults having problems related to speech and hearing. The ranges of activities are assessment, diagnosis, intervention, demonstrative home training program, follow-up, Audiological evaluation, hearing and trial & fitment, ear mould impression, etc.

Demonstrative home training program is done with parents focusing on comprehension & expression of speech & language skills. A Client centered approach is practiced, highlighting the abilities of the children, rather than their disabilities. A format called 'My Talented Child', is used for this purpose, where the parents and family members are included as partners in the intervention program.

Apart from clinical services to children and adults, the department is also involved in training and guiding students from other Institutes of Bachelor of Audiology Speech and Language Pathology and Master of Rehabilitation Sciences.



Intervention to the Clients by Speech Pathologist in a class room

The detail of clients benefited during the year 2010-11 are as follows:

New Case			Follow up sessions		
Single Disability	Multiple Disabilities	Total	Single Disability	Multiple Disabilities	Total
328	306	634	631	1210	1841

4.6. Department of Community Rehabilitation and Project Management:

The department undertakes family counseling as part of empowering parents and other family members of persons with multiple disabilities. A detailed family history is undertaken and strategies for enhancing a better understanding about the condition of the persons with multiple disabilities are worked through family dynamic model. The detail of clients benefited during the year 2010-11 are as follows.

New Cases			Follow up sessions		
Single Disability	Multiple Disabilities	Total	Single Disability	Multiple Disabilities	Total
369	255	625	332	247	579

4.6.1. Mobile Services

The aim of mobile service is to provide services for persons with multiple disabilities in the unreached areas around NIEPMD within the radius of 25 kms. The clients living in the areas are registered who have difficulty in attending services due to poor financial conditions and inability to travel due to mobility problems. Apart from identification, mobile service also aims to create awareness about NIEPMD and multiple disabilities. The services are at present carried by the trained caregivers and rehabilitation professionals. In addition, assistive devices under ADIP scheme are provided to clients with multiple disabilities. About 125 clients with multiple disabilities and 766 clients with single disabilities with a total of 891 clients were benefitted through Mobile services during the year 2010-11. The details are as follows

Year	No. of Clients		Total
	Single Disability	Multiple Disabilities	
2009-10	170	28	198
2010-11	766	125	891

Table 11: Information about the villages covered under mobile service and clients With disabilities registered for services during the year 2010-11

Month / Year	Name of the village visited	MD cases			UD cases			Gr total
		Male	Female	Total	Male	Female	Total	
April/2010	Shollinganallur, Chemencherry, Housing Board	2	2	4	17	14	31	35
May/2010	Chemencherry, Housing Board, Chemenchery Kumaran Nagar	2	-	2	32	25	59	61
June /2010	Kandigai, Rathimangalam, Vengapakkam	5	2	7	24	15	39	46
July/ 2010	Alathur, Kalavakkam, Kannapat, Thiruporur	5	10	15	36	19	55	70
August/2010	Madyaithur, Chemmbakkam, Kotamedu	1	1	2	20	13	35	37
Sept/2010	Maiylai, Mellayur, Sirunkundrum, Karambakkam	6	4	10	23	19	42	52
October/2010	Kirur, Nellikupam, Perumthandalai, Mulikupam	14	8	22	30	15	45	67
Nov 10	Arugundrum, Thirinellai, Periyavembedu,	4	9	13	27	17	44	57
Dec 10	Karnai, Kunapettu, Hanumanthapuram, Devaneri, Perur	9	1	10	29	19	48	58
Jan 11	Venkatamagalam, Veimbedu, Vaneyasavadi	4	4	8	24	30	54	62
Feb 11	Illaloor, Paiyanoor, Pudhueedaiyur, Periyameli, Mamallapuram, Kanathur, Kolapakkam, Sadanandapuram, Perngalathur, Nerkundrum	10	7	17	71	35	106	123
March 11	Peryngalathur, uraipapakkam, Mahabalipuram, Kirapakkam, guduvancherry, Vandalur, Kattankolathur	12	3	15	124	84	208	223
	Total	74	51	125	457	305	766	891

4.6.2 Schemes and Concessions

NIEPMD which is registered with National Trust has so far provided Niramaya Insurance cards in collaboration with National Trust to 46 clients with disabilities. The department is also involved in providing service certificates towards free bus pass for clients visiting the Institute. During the year 2010-11, 100 clients with disabilities were provided service certificate towards free bus pass for commuting from their respective home to NIEPMD. 49 clients with disabilities were provided with free bus pass for commuting within the state of Tamil Nadu. 15 clients with disabilities were provided with Railway concessions.

4.6.3. Extension Services

NIEPMD in collaboration with State Resource Training Centre (SRTC), Chennai initiated rehabilitation services for the urban population. The Professional team, comprising of Special Educator, Speech & Language pathologist and Audiologist, Pediatrician and Clinical Psychologist attends to clients on regular basis and referrals were made for 1917 clients for procuring National Disability identification card and related rehabilitation services during the year 2010-11.

Type of Disability	No. of clients
Single Disability	1054
Multiple Disabilities	863
Total	1917

4.7 Department of Adult Independent Living(DAIL):

This department is established with the objectives of providing skills training pertaining to various vocational trades, targeted toward economic empowerment, self advocacy and social security assuring adequate standard of living to the adults with multiple disabilities.

Besides the services, the Human Resource Development programs supporting and strengthening the departmental activities such as Parent Training program, Short Term Training program, Long Term Training program, Continuous Rehabilitation Education, Seminars, Workshops are also being organized periodically. Family is the primitive social institution and the individual and the family are always inseparable. The concept of rehabilitation would be much more meaningful only when the sound support and sensitization is extended firstly to the parent and the individual. At this dimension keeping the mother child concept in view, NIEPMD introduced an income generation program (IGP) for the parents of the clients. Under the above said program, a 6 months course on Tailoring & Embroidery in coordination with Vocational Rehabilitation Centre for Handicapped (VRC) Guindy, Ministry of Labour & Employment, Govt. of India was conducted.

- 28 parent trainees have successfully completed the course and thus have been provided the sewing machine at free of cost through Indian Bank, Chennai.
- Mobilized Job works facilitating Income Generation.
- As on 31-3-11, an amount of Rs. 87,611 (October 2011 to March 2012) (6 months) was the earned by parents after completion of training.

4.7.1 Vocational Training Units

The unit established under the subject are

- Pad File Unit
- Spiral Binding Unit
- Photo Frame Mounting Unit
- Jute Products Preparation Unit :(for both the Clients & the Parent trainee of IGP)

The labour cost of the every products of DAIL are given to the trainee who has prepared. The products of the DAIL are available at the Department for sale. Besides, the stalls are also being arranged for exhibitions towards the promotion of the sales of the products. Few clients were trained in sub-staff works and housekeeping activities. Successful trainees are being engaged as workers on daily wage basis.



Vocational Training given to Adults with Multiple Disabilities

The detail of clients benefited during the year 2010-11 are as follows.

New Cases			Follow up sessions		
Single Disability	Multiple Disabilities	Total	Single Disability	Multiple Disabilities	Total
45	35	80	1625	2163	3788

Success Story



Paintings of Mr. Rijay

Mr. Rijay, 28 year a Person with Multiple Disabilities approached NIEPMD on 26/9/08 to avail the services. He hails from an educated family with High economic status. His father was a Retired government employee (Officer in Central Customs Department), mother (home maker) and a younger sister in US. The Index person is eldest of the family.

He was diagnosed as Autism with Mental Retardation at the age of 5 years. Subsequently he received appropriate training in time.

He has passed SSLC exam from the Karnataka Secondary Education Examination board; a certificate course in "Desktop Publishing" under Government of India and a diploma in painting from Kalakshetra Foundation, Chennai.

The individual was assessed by the multidisciplinary team of NIEPMD and referred to Department of Adult Independent Living. Mr. Rijay had the necessary pre-requisite skills in all areas pertaining to motor, personal, communication, academic skills and occupational skills.

Accordingly, the needs were listed at hierarchy and an exclusive individualized rehabilitation plan was prepared. He had an additional talent in water colour painting. He attends the services of DAIL since 2008. Initially he was put into enhanced skill training some of his art paintings are displayed in the campus. Later he was asked to train his peers in water colour painting. All his paintings are appreciated by everyone. Much of his paintings was converted into the mementoes and was given to the visitors. His paintings has been exhibited not only at National level but also in USA. The National Institute on Developmental Delays (NSSD), Oklohoma, USA - is continuously giving him number of opportunities, exposure and training to exhibit his abilities on painting periodically.

The Tamil Nadu Government honored him the State Award as "Best Employee" for the year 2004. His aptitude & attitude towards paintings is applaudable. In precise he is a 'Role Model' to the community.

As rightly placed in Person with Disabilities Act (1995) that the Equal Opportunities would alone can bring those talented to limelight. So let us provide the maximum opportunities and campaign for his Empowerment.

Chapter 5

Scheme of Assistance to Disabled persons for purchase/fitting of Aids/Appliances (ADIP) Services

The ADIP scheme was introduced by Ministry of Social Justice & Empowerment, with an objective, to assist the needy disabled persons in procuring durable, sophisticated and scientifically manufactured aids and appliances that can promote their physical, social and psychological rehabilitation.

This scheme was carried out by NIEPMD since its inception. Subsequently this Institute has been allocated the states of Tamil Nadu by **Ministry of Social Justice & Empowerment, Govt. of India vide Letter F.No:4-79/06 DD-I dated 23.02.2009**. The total number of districts allocated were 12 out of 32 districts in Tamil Nadu. The grant in aid received under ADIP by NIEPMD, the opening balance, the expenditure, and closing balance are tabulated as follows.

Year	Opening Balance	Grant in aid received	Date of Receipt	Expenditure	Closing Balance
		Interest on SB a/c.			
2008-09	86,62,628	Rs.84,62,174	22.4.08	Rs.1,16,39,132	Rs. 57,36,285
		Rs. 2,50,615	24.12.08 18.02.09		
2009-10	57,36,285	Rs.12,50,000	6.4.09	Rs. 59,16,189	Rs. 12,42,271
		Rs. 1,72,175			
2010-11	12,42,271	Rs.3,00,11,000	23.4.2010	Rs. 34,05,397*	Rs. 2,80,84,647
		Rs. 2,36,773	29.12.2010		
			15.2.2011 31.3.2011		

* The reason(s) for less quantity of expenditure incurred is attributable due to various reasons like delay in supplying the materials from aids & appliances manufacturer (ALIMCO) and implementation of Model code of conduct for the Tamil Nadu Assembly Elections, etc.

The aids and appliances supplied under the scheme shall conform to Bureau of Indian Standard (BIS) specifications to the extent possible. Assessment and Distribution camps were organized as per the need and requirement of the community Three districts in Tamil Nadu were allotted namely, Erode, Sivagangai and Ramanathapuram for the year 2009-10 vide order No:F.No4-79/06-DD-1 dated 11.12.2008. During the year 2010-11, 1940 aids and appliances were provided to 1626 person with disabilities. NIEPMD had conducted camps in several places. The details are as follows:

Success Story



Baby Sonia brought to NIEPMD on 14th December 2009 at the age of 2 years. She had difficulty in moving hands and legs. The muscles of the child were very stiff. She only recognized light and bright colored objects. When she had pain she used to cry. She used to get fits often. At the early intervention centre, she was assessed and a program was prepared. She was given ice therapy, herbal massage to produce body awareness. Tactile development was initiated by giving squeezing toys that produce sounds. She likes the sounds of different frequencies. She learnt to look at her mother for her needs. Slowly she began to vocalize as she was given therapy using spacer which is the device for breathing. She began to look at pictures as she was given visual stimulation, object recognition and picture recognition in a sequential manner. She could relate to the sound of animals with the picture. It was really astonishing to find that Sonia could learn the concept of "mine and yours".

As the therapy progressed she could come out with words like 'Amma' and 'Pappa'. She also learnt to say her aunt's name. Her sitting posture and hand functions improved with physiotherapy and occupational therapy. The cognitive development was taken up step by step by the intervention of the Clinical Psychologist. The progress was tremendous inspite of her father's demise during this period of intervention. However, mother was emotionally supported by the Faculty, which helped them to achieve many more milestones successfully. We look forward.....



ADIP Identification camp at Uthirameru, Tamil Nadu

Table 12 : ADIP camps conducted during the year 2010-11

Sno.	Name of the Disitric	State	Date	Category wise no.of beneficiaries.					Total
				OH	VH	HH	MH	P&O	
1.	Warangal	Andhra Pradesh	09/04/2010	107	-	-	-	-	107
2	Tarikere	Karnataka	22/10/2010	105	-	42	10	-	157
3.	Perumbalur	Tamil Nadu	05/06/2010	37	03	26	10	-	76
4.	Erode	Tamil Nadu	05/07/2010	50	-	-	-	29	79
5.	Sathiyamanagalam	Tamil Nadu	05/07/2010	37	-	-	-	-	37
6.	Trichy	Tamil Nadu	13/01/2011	16	-	-	-	-	16
7.	Trichy	Tamil Nadu	06/02/2011	34	-	-	-	-	34
8.	Virudhunagar	Tamil Nadu	25/02/2011	29	-	61	49	26	165
9.	Ramanathapuram	Tamil Nadu	26/02/2011	76	-	45	97	-	218
10.	Kancheepuram	Tamil Nadu	26/02/2011	83	-	142	43	10	278
11.	Centre – NIEPMD	Tamil Nadu	2010-2011	128	13	47	257	14	459
Total				702	16	363	466	79	1626

(* OH – Orthopedically Handicapped, VH – Visually Handicapped, HH – Hearing Handicapped, MH – Mentally Handicapped, P&O – Prosthetics and orthotics)



Hon'ble Minister D.Napoleon, MoS, MSJ&E, Govt. of India distributing Aids & Appliances to the beneficiaries during distribution camp at Perambalur District, Tamil Nadu

Table 13: Details of Aids and Appliances distribution during 2010-11

Sl.No	Particulars	Nos.	Sl.No	Particulars	Nos.
1.	Tricycle	234	25.	Adaptive device	01
2.	Wheel chair (A)	121	26.	LS Belt	04
3.	Wheel chair@	50	27.	Sachar foot	01
4.	Elbow Crutches	135	28.	Jaipur foot	01
5.	Auxillary Crutches	230	29.	Weigh cuff	01
6.	Walking Stick	57	30.	TLM 0-3 yrs	77
7.	Corner chair	31	31.	TLM 3-6 yrs	56
8.	CP chair	25	32.	TLM 6-10 yrs	27
9.	Rollator	24	33.	TLM 10+ yrs	69
10.	Walker	06	34.	Hearing Aid -Mod 'S'	49
11.	Motorized Scooter	50	35.	Hearing Aid -Mod 'V'	73
12.	HKAFO	09	36.	Hearing Aid -Mild 'V'	30
13.	KAFO	83	37.	Hearing Aid -Strong 'S'	85
14.	AFO	66	38.	Hearing Aid -Strong 'V'	96
15.	Splint	44	39.	Hearing Aid -Ex.Stg 'S'	17
16.	Gaiters	60	40.	Hearing Aid -Ex.Stg 'V'	01
17.	Below Knee prosthesis	13	41.	Braille Slate	12
18.	Below Elbow Prosthesis	04	42.	Braille Watch	11
19.	Above Elbow Prosthesis	05	43.	Geometry kit	01
20.	Above Knee Prosthesis	05	44.	Abacus	01
21.	Modified Shoe	30	45.	Taylor's frame	11
22.	PTB	06	46.	Cane	14
23.	MCR Chappell	05	TOTAL		1940
24.	Cosmetic glove	09			

The details of fund allotted and the expenditure incurred for the same are given in Chapter 10.

Chapter 6

Research & Development

Research is a scientific and systematic search for pertinent information on a specific topic. It includes a careful investigation or inquiry specially through search for new facts in any branch of knowledge. Research is an academic activity. It consists of defining and redefining problems, formulating hypotheses or suggested solutions, collecting, organizing and evaluating data and reaching conclusion. In the field rehabilitation it is always an evidence based research that is carried out. Research and Development is one of the objectives of NIEPMD. The fund allotted for research projects during the year was **Rs. 26.00 lakhs**.

The Academic committee has been formed to provide guidance for the Research projects. The details of the members committee are in the **Annexure 3 (Page No 111)**. During its meeting held on 27th November 2008, the Academic Committee approved to undertake 4 research projects with the duration of three years. The details of the research projects thus undertaken are as follows:-

6.1 On going Research Project:

1 Biochemical and Neurodiagnostic Profile of Clients with Multiple Disabilities

Introduction:

The Department of Physical Medicine & Rehabilitation (PMR), NIEPMD has initiated a project to find out the underlying causes of Multiple Disabilities, through the Biochemical, Genetic and Neurodiagnostic Profiling.

Aim:

To find out the causes of Multiple Disabilities and to prevent the occurrence or deterioration of Persons / Children with Disabilities.

Expected outcome:

The clients with metabolic disorders will be advised appropriate diet and also methods to improve skills in them and services will be provided. The diagnosis of genetic causes of disability in a person could provide valuable insight into pattern of inheritance and recurrence of the same genetic or similar conditions in their future sibling. Advising parents who are of consanguineous origin to be cautious and are at high risk of having children with Multiple Disabilities. Prenatal diagnosis and counseling for parents who are to have disabled children and anxious about the status of the growing fetus.

Current Status:

The project has moved to the second phase with the genetic component of the study, where in through karyotyping and other advanced genetic procedures the genes of the disabled clients are assessed. The analysis also has progressed in testing of the parents, to establish the inheritance pattern of the genes. Prenatal diagnosis and appropriate measures taken, where in a genetic cause of disability is established.

2. Study of sleep patterns in children with multiple disabilities and its effect in day to day functioning.

Introduction:

Clients with Multiple Disabilities are often have been problems in getting smooth sleep. The lack of sleep produces inattention, irritation and interferes with learning. Hence, study of sleep patterns and treatment of sleep disorders will help the clients to over come the above difficulties.

Aim:

To record the sleep pattern of 50 clients with Multiple Disabilities analyze the pattern of sleep and give intervention.

Expected outcome:

The clients who are suffering due to inadequate sleep will be made to have a sound sleep and thus reducing the irritability and inattention.

Current status:

50 children with multiple disabilities and with problems with sleep have been identified. The proforma regarding assessment of sleep patterns is prepared. A Memorandum of Understanding (MoU) has been prepared and signed by Dr Ramakrishnan of the NITRA Sleep Clinic, Chennai. The Clients are being sent to clinic for sleep recording Polysomnography. Sleep pattern are studied from 9.30pm in the night till the child wakes up. 11 children have been sent for sleep analysis. The reports showed problems like non-establishment of Rapid Eye Movement sleep (REM), snoring disturbances, inadequate feeding and seizure disturbances. Children were advised accordingly by the Specialist. It was difficult to record the sleep in children with hyperactivity. The clinic has developed adaptations to record the sleep pattern in hyperactive children. This study has helped to control unwanted irritations seen in children with Multiple Disabilities. The attention span has increased, because the children could have prolonged hours of uninterrupted sleep. For all the 4 children assessed – Medication, exercises and modification at home of the sleeping room was provided. It was reported by the parents that there is remarkable improvement in their sleep pattern.

3. A study on ventilatory pattern, parameters and intervention for the clients with spastic Quadriplegia cerebral palsy.

Introduction:

Patients with quadriplegia have immense changes in ventilatory pattern. There seems to be a similar motor deficit in spastic quadriplegic cerebral palsy. Hence, there arises a need to assess their ventilatory parameters and find out whether there is a respiratory compromise.

Aim:

To study the ventilatory pattern, parameters of clients with spastic quadriplegic cerebral palsy, to design an interventional protocol for the same.

Expected outcome:

Depending on the results of the study recommendations will be given in the following areas, to develop a protocol for pulmonary rehabilitation, inclusion of pulmonary rehabilitation in service models, to develop separate pulmonary rehabilitation unit for clients with multiple disabilities.

Current status:

This study was designed to be conducted in 3 phases. The first phase comprises of

1. Identifying suitable clients meeting the inclusion criteria.
2. Assessing the ventilatory parameters using computerized spirometer.
3. Comparing the value of respiratory parameters with normal subjects.
4. To find out the area of short fall and device appropriate pulmonary rehabilitation protocol.

Phase 1 is completed and Phase 2 was initiated with a goal of improving Pulmonary functions. Pulmonary functions are improved through structured pulmonary rehabilitation protocol which comprises of

1. Breathing Exercises
2. Active exercise to shoulder/shoulder girdle
3. Thoracic expansion exercises
4. Diaphragmatic strengthening exercises etc.

For a stipulated period of time considering individual differences and capacities of children with Cerebral Palsy to sustain the regime.

4. Existing service provisions for Persons with Multiple Disabilities in India-

A Database compilation

Introduction:

Persons with Multiple Disabilities do have a combination of various disabilities that may include: physical mobility, speech, mental retardation, visual, hearing and other associated disabilities. Thus there is a need to have a data bank pertaining to the existing services and service models available in the whole country.

Aim:

To provide a compiled Data base of the existing Organizations/ Institutions rendering their services for persons with Multiple Disabilities in India.

Objectives:

1. To compile and categorize the addresses of the Organizations/ Institutions working for Persons with Multiple Disabilities.
2. To compile information pertaining to the services available to persons with Multiple Disabilities all over India.
3. To review information pertaining to the service delivery models available for persons with Multiple Disabilities.
4. To refer the outstation cases to the Institutes for long term Rehabilitation.
5. To assess the needs of the NGOs to provide effective services to persons with Multiple Disabilities.

Expected outcome:

Data bank of list of Organization/Institutions providing services for Persons with Multiple Disabilities.

- District wise directory of Organization/Institutions will be documented.
- To compile nation wide data for further research.
- To develop unique service delivery model at NIEPMD.
- Networking with NGO's working in Tamil Nadu and other states.
- Publication and Presentation.

Chapter 7

Important Events

Certain events are milestones in the history of NIEPMD. The meeting of the Central Monitoring Committee on Construction, Southern Regional Workshop on UNCRPD, Visit of Baswan Committee & Parliamentary standing committee and the celebration of International day of persons with disabilities needs to be specially mentioned in this chapter.

7.1 Southern Regional Workshop on UNCRPD:

NIEPMD organized a Southern Regional Workshop on the theme of “Role of Stake Holders in Implementing UN-convention on the Rights of Persons with Disabilities (UNCRPD) in India at Green Coconut from 15th – 16th April 2010. About 91 Professionals from southern states of India comprising of Kerala, Karnataka, Andhra Pradesh, Tamil Nadu and Pudhucherry GOs and NGOs working in the field of Disability / having major contributory role in disability rehabilitation and management participated in the workshop. Mrs. Poonam Natarajan Chairperson National Trust, who presided over the function. Dr. J.P.Singh, Member Secretary, RCI delivered the keynote address.

Prof. P. Jeyachandran, Vijay Human Services, Chennai, Dr. T.A.P.Varadakutti, State president, Tamilnadu Association for Welfare of the Physically Handicapped, Chennai and Ms. Meenakshi Asst. Coordinator, Vidhyasagar participated as a Special Guest.



Dignitaries during the Inaugural function of Workshop on “Role of Stake Holders in Implementing UNCRPD”

Current status:

- A Research advisory committee has been constituted to carry out the process.
- Details of other service providers have been collected through Internet and Directories that were available.
- A model Questionnaire has been prepared with reference to various reviews of Directories.

6.2 Research Papers Published during year 2010-2011

Table 14: Publications of Research Papers in Journals

S.No	Title of the paper	Name of the Journal	Name of the Faculty
1.	A Retrospection of socio - economic profile to Persons with Autism Spectrum Disorder	Disabilities & Impairments 25(1&2), 2011	Dr.Neeradha Chandramohan, Sri.P.Kamaraj, Sri.A.Amarnath & Sri.Rajesh Ramachandran
2.	Significance of outdoor activities in educating persons with Deafblindness	Journal of Disability Management and Special Education 1(1), 2011	Dr.J.Vijayalakshmy, Smt.B.Leelavathi & Sri.Stalin Arul Regan
3.	Mental health status of teachers working in special schools for children with special needs	Journal of Disability Management and Special Education 1(1), 2011	Dr.K.Balabaskar
4	Independent living a successful inclusion process for persons with Mental Retardation	The Lamp newsletter of Navjothi Trust, Feb 2011	Dr.K.Balabaskar & Sri.Rajesh Ramachandran

7.2 Meeting of the Central Construction Committee:

The 2nd & 3rd Central Monitoring Committee meeting on construction of new building of NIEPMD was held at NIEPMD, Chennai on 9th July 2010 & 21st October 2010 respectively, under the Chairpersonship of Sri.K.M.Acharya, IAS, Secretary to GOI, MSJ & E, vide letter No;8-1/2009-NIs dated 3rd April 2009. The Committee Members from Various Govt.Departments / Institutions of repute and officials from CPWD, Chennai participated in the meeting and deliberated in depth about to structure to be suits the state of art building.



Dr.Neeradha Chandramohan, Director, explaining the barrier free features of the NIEPMD building to Shri.K.M.Acharya, IAS, Secretary to GOI, Ministry of Social Justice & Empowerment, Govt.of India and committee members.

7.3 Workshop:

NIEPMD organized a one day workshop on Applied Behavior Analysis – Perspectives on 13th August 2010 with an objective of exploring various possibilities on starting a course on Applied Behavior Analysis. About 20 experts from various part of the country took part in the discussion and submitted their recommendation to RCI as well as Ministry of Social Justice & Empowerment, Govt. of India



Delegate presenting her view during the workshop on Applied Behaviour Analysis - Perspectives

7.4 Cerebral Palsy Awareness Day:

NIEPMD celebrated the Cerebral Palsy Awareness Day on 3rd October 2010. To mark the occasion this institute organized various cultural programs and competition for Persons affected with Cerebral Palsy. The various special school children were participated.



7.5 Distribution of Sewing Machines:

Under the Income Generation Program, 12 parents of children with Multiple Disabilities were distributed Sewing Machines sponsored by Indian Bank, Chennai on 29th October 2010.



One among the parents receiving sewing machine

7.6 International Day of Persons with Disabilities

NIEPMD celebrated the International Disability Day on 3rd December 2010 in its campus premises. In this connection various cultural programs have been organized and performed by trainees and PWDs.



Trainee of DSE (Db) performing events during International day of Person with Disabilities

7.7 Visit of Baswan Committee:

The Ministry of Social Justice & Empowerment, Govt. of India constituted a Committee to make recommendations for strengthening of National Institutes under MSJ&E vide its Order No.22-44/2008-NI dated 25/10/2010 under the Chairmanship of Shri. B.S.Baswan and the committee Members Shri.T.V.A.Ram, Deputy Secretary, MSJ&E, Dr.M.Jayaram, NIMHANS, Bangalore & Prof. R.Rangasayee, Director, NIHH. The Committee visited NIEPMD on 15th February 2011 to get an exposure about the activities of the Institute.



Shri.B.S.Baswan along with its committee members during the visit of NIEPMD

7.8 Visit of Parliamentary Standing Committee:

The Cabinet Secretary, Govt. of India vide Lok Sabha Secretariat **OM No.6/2(1)/CSJE/2011 dated 19th January 2011** Constituted “The Parliamentary Standing Committee on Social Justice & Empowerment” comprising of 25 Members of Parliament and 4 accompanying officers of Lok Sabha Secretariat. The said committee visited NIEPMD to review the activities of the institute on **18th February 2011** under the Chairmanship of **Shri.Darasingh Chauhan**, Hon'ble Member of Parliament. The Committee consist of both the Members of Parliament from Rajya Sabha and Lok Sabha namely Smt.Jarna Das Baidya, Shri.Avtar Singh Karimpur, Shri.Narayan Singh Kesari, Shri Baishna Panda, Shri Nandi Yelliah, Shri.E.T.Mohamed Basheer, Shir.Budeo Choudhry, Shri.Premchand Guddu, Shri.Baliram Jadhav, Shri.Mohan Jena, Shri.Kamlesh Baswan, Shri.Lalit Mohan Suklabaidya and Shri.Monohar Tirkey.



Parliamentary Standing Committee Chairman, Shri.Darasingh Chauhan, M.P, and committee members appreciated the services rendered to the persons with Multiple disabilities

7.9 State Consultation Meeting on working draft for Persons with Disabilities Act:

National Institute for Empowerment of Persons with Multiple Disabilities and The Spastic society of Tamil Nadu, Chennai Jointly organized the State consultation meet on Working Draft for New Legislations for Rights of Persons with Disabilities Bill 2011 from 9th-10th March 2011 at Central Leather Research Institute (CLRI) campus, Chennai. The program was Inaugurated by Manimeghalai, State Commissioner for Differently Abled, Govt.of Tamil Nadu in the presence of Dr.Neeradha Chandramohan, Director, NIEPMD, Joint Director Dept.of Differently Abled, Govt.of Tamil Nadu, Mr.A.Arivanandam, Regional Director, NIVH and Mrs.Madhumathi Achutan, Director, SPASTN. About 428 participants comprising of Persons with disabilities, Govt.officials working for the Persons with disabilities, Parents of persons with disabilities, Lawyers, SSA teachers and professionals etc attended the meeting and recommendations were forwarded to the Ministry.

7.10. State Level Workshop on “Effective Implementation of UNCRPD”:



Shri.Vijayarajkumar, IAS, State Commissioner for Differently Abled, Govt.of Tamil Nadu addressing during the workshop,

NIEPMD organized a State Level workshop on “Effective Implementation of UNCRPD” for District Differently Abled Welfare Officers of Tamil Nadu from 22nd – 23rd Oct 2010 at CRENIO, ECR, Chennai. About 37 Participants from various Districts from Tamil Nadu participated the Workshop. Shri.S.S.Jawahar, Principal Secretary to Govt.of Tamil Nadu, Dept.of Welfare of Differently Abled, was the Chief Guest and Shri.Vijayarajkumar, IAS, State Commissioner for Differently Abled, Govt.of Tamil Nadu was the Guest of Honour on the occasion.

Chapter 8

Other Activities

NIEPMD also participated the following Exhibition cum awareness programs organized by various Government organizations.

7.11 Bharat Nirman Public Information Campaign:

NIEPMD participated the Exhibition Bharat Nirman Public Information Campaign organized by Press Information Bureau, from 16th- 20th June 2010 at Narthagi Marriage Hall, Gudalur, Nilgiris District. The Exhibition was inaugurated by by Shri.Kuppusamy, District Revenue Officer, Gudalur. The Hon'ble Minister K.Ramachandran, Department of Khadi Board, Govt.of Tamil Nadu visited the stalls on 18th June 2010.

NIEPMD participated in the Exhibition Bharat Nirman Public Information Campaign organized by Press Information Bureau, from 7th-9th August 2010 at Lena Mahal, Paramakudi, Ramanathapuram District. The Exhibition was inaugurated by Hon'ble Minister Shuba Thangavelan, Department of Slum Clearance Board, Govt. of Tamilnadu who was also the chief Guest on the Occasion. Thiru R. RamPrabhu MLA, Paramakudi, Thiru K.Shanmugaiyah, Revenue Divisional Officer, Thiru Pravesh Kumar I.P.S, Superintendent of Police, Paramakudi, Thiru Bose, Chief Educational Officer, Paramakudi. Thiru U.Thisai Veeran Panchayat President, Paramakudi who were among those present on the occasion.



NIEPMD stall at Bharat Nirman Public Information Campaign



The Ministry of Social Justice & Empowerment, Govt. of India has entrusted NIEPMD to carry out the following orders & activities during the year 2010-2011.

8.1 Constitution of Monitoring committee for the purpose of Implementation of Disability related schemes of the Ministry of Social Justice & Empowerment:

Ministry of Social Justice & Empowerment, Govt. of India vide **letter No: 4-2(39)/09-DD-I dated 29th September 2009, (Annexure 9, Pg.No:139)** Constituted a Monitoring Committee for purpose of monitoring of implementation of Disability related schemes of the Ministry (especially ADIP, DDRS & DDRC). This Institute has been allocated the states of Tamil Nadu, Kerala, Pondicherry, Andaman & Nicobar Islands and Lakshadweep for regular monitoring, inspection and guidance to grantee organization under the disability schemes of the Ministry(especially ADIP, DDRS & DDRCs). The officials of NIEPMD & Regional centre of NIVH, Chennai inspected 54 NGO's out of 91 during the Year 2010-11 and necessary technical guidance have been given to the above NGOs for further enhancing their activities & services. The inspection reports had been submitted to the Ministry.

8.2 Establishment of Composite Regional Centre for Person with Disabilities at Kozhikode:

The Secretary to GOI, SJ&E vide his **DO No:6-1/2009-NIs dated 9th June 2010** informed the respective Chief Secretaries of Govt.of Kerala & Govt.of Gujarat regarding the proposal of the Ministry to start a Composite Regional Centre for Persons with Disabilities at Ahamadabad & Kerala and inter alia requested to allot suitable land and building for housing the centre till its own building is constructed. In reply by The Secretary, Social Welfare, Govt.of Kerala vide letter **No:6103/A2/2010/SWD dated 2nd August 2010** regarding the allotment of 10 acres land at Cheyur - Kozhikode, to establish the CRC at Kozhikode at Kerala under the administrative control of NIEPMD.

8.3 Shilpotsav--2011

National Backward Classes Finance and Development Corporation, New Delhi organized the Exhibition Chennai Shilpotsav – 2011 at India Tour and Industrial Fair, Island Ground, Chennai from 1st January – 15th February 2011. As part of the awareness creation NIEPMD put up stall in the Pavilion of Ministry of Social Justice & Empowerment, Govt.of India. **Thiru. Mukul Wasnik**, Hon'ble Union Minister of Social Justice & Empowerment, GOI, and **Thiru.D.Napoleon**, Minister of State for Social Justice and Empowerment, GOI, visited the stall on 21st January 2011 and distributed Aids and Appliances to the Persons with Multiple Disabilities.



Hon'ble Union Minister Shri.Mukul Wasnik and Hon'ble Minister of State Shri.D.Napoleon, MSJ&E, GOI, visited the stall and distributed aids and appliances to Persons with Multiple Disabilities.

8.4 Distribution of Motorized three wheeler:



Hon'ble Minister.Shri. D.Napoleon, MoS, MSJ&E, GOI distributed Motorized three wheeler to the beneficiaries

Thiru.D.Napoleon, Hon'ble Minister of State for Social Justice & Empowerment, Govt.of India, distributed Motorized three wheelers to 18 eligible beneficiaries of Persons with Disabilities on 13th January 2011 at Trichirapalli. The Motorized three wheeler was Sponsored by ONGC, New Delhi and NIEPMD extended the logistic support.

Chapter 9

Administration

The Administrative Wing comprising of various sections viz., Administration, Establishment, Estates & Maintenance, Accounts, Stores & Purchase, Training Program/Academics & Library and Information section plays a vital role in the effective functioning of the Institute. All matters pertaining to administration, personnel, vigilance, implementation of various GOI Policies, rules and regulations, guidelines, purchase, logistics, tendering academic program activities, budget and financial management, estates, dissemination of information, media publicity, RTI, implementation of official language, etc., are dealt within these sections of the Administration Wing.

9.1. Staffing:-

The details of sanctioned regular posts and posts filled during the period of report i.e. year 2010-11 are as under:-

Details of Sanctioned Strength: NIEPMD

Total No. of Posts sanctioned (Cleared by GOI/EFC)	: 71 Posts
No. of posts created in Phase-I	: 32 Posts
No. of posts in Phase – II (Sanctioned - Case taken up for its Creation)	: 39 Posts

Group -A

Director	= 01
Deputy Registrar (Administration)	= 01
Associate Professor	= 06
Accounts Officer	= 01
Lecturers	= 06
Information & Media Officer	= 01

Group – B

Rehabilitation Officer	= 06
Program Assistant	= 06
Special Education Teacher	= 04

Total	32 Posts
--------------	-----------------

Table 15: Details of Posts held and vacant in Phase – I (till 31st March 2011)

S. No	Name of the Post	Sanctioned	Held	Vacant
1.	Director	01	01	00
2.	Deputy Registrar (Admn.)	01	00	01
3.	Associate Professor	06	04	02
4.	Accounts Officer	01	00	01
5.	Lecturer	06	06	00
6.	Info. & Media Officer	01	01	00
7.	Rehabilitation Officer	06	06	00
8.	Program Assistant	06	06	00
9.	Spl. Education Teacher	04	04	00
Total		32	28	04

Note: (i) One Post of Group – D (Peon) has been transferred along with the post from NIHH, Mumbai

9.1.1. Filling up of identified back log post reserved for SC/ST, OBC and PwDs:

In pursuance to GOI instructions to fill up the identified back log vacancies in respect of SC/ST/OBC and Persons with Disabilities, by conducting Special Recruitment drive, Ministry of Social Justice & Empowerment vide their letter No:D.O.No:27-02/2008 -Cdn dated 7th May 2010 had instructed NIEPMD to submit their annual direct recruitment plan, to take necessary action to fill up the backlog vacancies and to submit detailed progress report in this regard. However it is submitted that NIEPMD established in the year 2005 and out of 71 posts sanctioned by GOI/EFC, only 32 posts have been created in Phase – I and that the recruitment action for filling up the sanctioned posts were taken up only after March 2007, there is no back log vacancy identified to be filled up for SC/ST/PwDs/OBC.

9.2. Vigilance cases:

During the period of report no disciplinary/ vigilance cases were initiated or pending at NIEPMD.

9.2 Construction of buildings: -

The Government of Tamil Nadu allotted 15.22 acres of land on East Coast Road, Muttukadu along with the existing buildings, which were suitably renovated through CPWD, Chennai to start the service and program activities and family cottage services to the persons with Multiple Disabilities. For construction of New Building for NIEPMD the Ministry of Social Justice & Empowerment, Govt.of India issued the Office Memorandum of the Minutes of Expenditure Finance Committee(EFC) meeting vide letter No:8-2/2006 – N.I.I dated 27th June 2008 (Annexure 8, Pg.No:138). The Ministry of Social Justice & Empowerment, Govt.of India constituted a Central Committee for monitoring of the construction of new complex at NIEPMD, Chennai under the Chairmanship of Shri.K.M.Acharya, Secretary to Govt.of India, MSJ&E, Govt. of India letter F.No:8-1/2009-Nis, dated 3rd April 2009 (Annexure 7, Pg.No:136). So far three meetings were held on 12/05/09, 09/07/10 & 21/10/10 respectively at NIEPMD, Chennai. The new buildings of NIEPMD were being constructed through CPWD, Chennai with the total area of 12331 Sq. mtrs with a total financial estimation of Rs.38.80 crores. The details of the construction of buildings are as follows.



View of the Model School building



Tactile Garden: The garden, which provides unique tactile stimulation that will help Children with disabilities to enhance their skills

Table 16: Details of Construction of the Building

S NO.	SUB – HEAD	Total Cost	Area (sq.mtrs)
1	Services , Program Block and Administrative Block (Four storied)	Rs.19,45,96,279	6868
2	Special Education centre (Single - Storied)	Rs. 3,04,94,637	1080
3	Mens Hostel (Three Storied) In-mate Capacity 3 -bedded Room - 13 x 3 =39 Students 2-bedded Room - 06 x 2 = 12 Students Total Capacity = 51 Students	Rs. 1,90,26,866	933
4	Womens Hostel (Four Storied) In-mate Capacity 3 -bedded Room - 18 x 3 = 54 Students 2-bedded Room - 12 x 2 = 24 Students Total Capacity = 78 Students	Rs. 2,66,92,766	1309
5	Kitchen and Dining hall (Single - Storied) Kitchen cum Pantry - 1 Boys Dining Hall - 50 students capacity Girls Dining Hall - 80 Students	Rs. 1,07,03,899	360
6	Guest House (Two Storied)	Rs. 1,41,77,114	641
7	Staff Quarters (Three - Storied) Director's Residence -V - 01 Staff Quarters Type -IV - 06 Staff Quarters Type -III - 06	Rs. 2,34,44,384	1140
8	Development works - Civil	Rs. 2,43,00,500	
9	Development works - Electrical	Rs. 1,77,74,469	
	Total	Rs. 36,12,10,914	
	Add for contingencies @ 3%	Rs.1,08,36,327	
	TOTAL	Rs.37,20,47,241	
	Add Labour Welfare Cess @ 0.30%	Rs. 11,16,142	
	Add VAT @ 2%	Rs.74,40,945	
	Service Tax @ 2 %	Rs.74,40,945	
	GRAND TOTAL	Rs. 38,80,45,273	12331

Barrier free features of New Buildings of NIEPMD



Doors and windows with bright colored paints



Corridors with easy movement and the floors with non-slippery tiles



Floors with chequered and embossed tiles



Sensor based washbasin for easy handling



Switches installed at suitable height with Braille Inscription



Tactile signage through braille

**Table 17: Work Progress as on 31st March 2011
Construction of Building for NIEPMD**

Sl. No.	Type of building	Present status of the building
1	Services, Programme and Administrative Block	Finishing works are in progress and Erection of machinery are under progress
2	Special Education Centre	Work Completed and handed over
3	Men's Hostel	Finishing works are in progress and Erection of machinery are under progress
4	Women's Hostel	Finishing works are in progress and Erection of machinery are under progress
5	Kitchen and Dining Hall	Finishing works are in progress.
6	Guest House	Finishing works are in progress.
7	Staff Quarters	Finishing works are in progress.
8	Development Works	<p>Internal Roads: premix carpet with semi dense bituminous works awarded</p> <p>Sewer Lines: Main lines are laid.</p> <p>Filtered water supply: Laying of 100 mm dia ductile iron pipes are in progress.</p> <p>Over head tank and underground sump: works completed</p> <p>Open wells: work completed.</p> <p>Sewage Treatment Plant: 65 % of works completed</p> <p>Sub-Station: Work completed.</p>

9.3 Library & Information Service

Library plays a vital role in furthering the academic & research mission of NIEPMD and facilitates creation and dissemination of knowledge. Besides holding an excellent print collection of over 1200 volumes of books, journals, theses, reports, standards, pamphlets, It also provides access to over 200 electronic books and journals in Rehabilitation. The library continued to offer its services to Staff and students. During the year 2928 visitors visited the Library and 1125 books have been issued to the users. Collection building is one of the important functions of the library that supports academic and research work of the students, faculty, staff and other users. Library collection comprising of books, journals, theses, reports, standards, pamphlets and other reading materials.



Trainees refer books at Library

The total collection of library as on March 2011 stands as follows

Table 18: Total stock as on 31st March 2011

Sl. No	Collection	Added during 2010-11	Total as on 31 st March 2011
01	Books	160	1120
02	Journal	20	20
03	Newspaper Clippings	237	1197
04	Back Volumes	15	46



A list of new additions of books and Journals issues circulated to all the Departments at regular intervals. Special care was taken to neatly maintain the library stacks to facilitate users to locate the desired document quickly.

9.4 Implementation of Right to Information Act

The Right to Information Act 2005 (Act No. 22/2005)[1] is a law enacted by the Parliament of India giving citizens of India (except those in the State of Jammu and Kashmir who have their own special law) access to Government records. Under the terms of the Act, any person may request information from a "public authority" (a body of Government or instrumentality of State) which is required to reply expeditiously or within thirty days. The initiatives of Right to Information has come from groups and communities demanding from the Government, its agencies and departments, disclosure about their activities and more specifically allocation and utilization of public funds and public goods. For the effective implementation of RTI act, Dr.Neeradha Chandramohan – Appellate Authority, Mr.A.Amarnath – Transparency Officer and Mr.M.Rajesh – Public Information Officer has been nominated.

During the year 2010-11 the Institute had received 14 applications, seeking information on various activities and issues related to Allowances, various posts, Recruitment, Tax exemption, DACP scheme and GPF/NPS. All the 14 queries had been answered to the applicants within the time frame. The following officers has been nominated for RTI Act 2005 at NIEPMD.

9.5 Implementation of Official Language

The Institute has been striving to achieve the targets set in the Annual Program 2007 – 08 of Ministry of Home Affairs, Government of India, for transacting the official work of the Union in Hindi. As per Section 3(3) of the official Languages Act all the required documents were issued both in Hindi & English. The letters received in Hindi were replied to in Hindi only. Institute's monthly report letter had been sent in Hindi and also the question papers pertaining to various examinations were prepared in bilingual and the students were given option to write the examination in Hindi. The Details of the Hindi correspondence during the year 2010-11 are as follows.

No. of letters received in Hindi	: 10
No. of letters prepared & sent in Hindi	: 17

9.6 Implementation of Various Government orders of Government of India:

As per the standing instructions of the **Ministry of Home Affairs**, Government of India, 30th January of every year is observed as **Martyr's day**, for paying respect to those who gave their lives in the struggle of Indian Freedom. As part of this, all the staff members and students / trainees, on the specified date, observe two minutes silence to pay homage for the departed souls. Accordingly, the said day was observed at NIEPMD on 30th January 2010.

As per the Instruction of **Ministry of Personnel, Public Grievances and Pensions, Govt. of India, DOPT OM No.11013/3/2009-Estt.(A) dated 21st July 2009**, NIEPMD had constituted a committee to prevent the sexual harassment of working women in our office, as per the rule 3 of CCS(Conduct) rules,1964. Which is functioning effectively. Periodical review meetings of the committee was also carried over during the year 2010-11.

The Institute observed **Sadbhavna Diwas** by taking an oath on 20th August 2010, marking the birth anniversary of Late Prime Minister of India, Shri. Rajiv Gandhi, to promote National Integration and Communal Harmony, adhering to the letter from the **Ministry of Youth Affairs and Sports, Government of India, vide O. M. dated 11th July 2008**.

Chapter 10

Audit Reports & Annual Accounts

An amount of Rs.16.44 crores were the total receipts for year 2010-11, among those an amount Rs.43 lakhs was closing balance for the year 2009-10, Rs.11.83 crores had been received as Grants in aid from MSJ&E, GOI, and Rs. 4.18 crores was collected as Receipts of Tuition fees, Registration fees, Guest House charges and application fees, interest on RIP & savings bank accounts for the year 2010-11. The Recurring and Non-recurring expenses during the year 2010-11 was Rs.14.90 crores and the closing balance as on 31st March 2011 amounting to Rs.1.54 crores will be carried over for the year 2011-12.

In terms of Section 20(1) of C&AG's (DPC) Act, 1971, the CAG, New Delhi had entrusted audit of Annual Accounts of NIEPMD for a period of 5 years from financial year 2006-2011 to the Principal Accountant General (Civil Audit) (PAG), Tamil Nadu and Puducherry, Chennai. Accordingly, the PAG, Chennai is auditing the annual accounts of NIEPMD.

For the financial year 2010-11, the audited statement of accounts comprising of accounts statement, balance sheet, income & expenditure statement and receipts and payment details which were verified by the Internal Auditor was submitted to the PAG. The audit team was deputed by the Principal Accountant General visited NIEPMD for audit from 6th June – 15th June 2010. The audit report, audit certificate and certified accounts of the Institute for the financial year 2010-11 were received from the PAG vide letter No: CAB/I/28-050/2011-12/86, dated 3rd Oct 2011. The summary of accounts and audit report are given below:-

Summary of Accounts Statements for the year 2010-11

Table 19: Details of NIEPMD – Main Account: Plan Grants-in-aid

		Rs.in crores
1	Closing Balance of Rs.0.43 crores for the f/y 2009-10, was taken as opening balance for the f/y 2010-11	0.43
2	Grants-in-aid received under plan head during the year 2010-11 from Ministry of Social Justice & Empowerment, New Delhi	11.83
3	Receipts of Tuition fees, Registration fees, Guest house charges and application fees, interest on RIP & savings bank accounts for the year 2010-11	4.18
	Total	16.44
4	Less: Recurring & Non-recurring expenses for the year 2010-11	14.90
	Salaries	1.76
	Administrative Expenses	0.59
	Programmes & Services (HRD)	0.75
	Capital Assets	0.13
	Advance to CPWD	11.50
	Advance to TNTEU & Others	0.17
	<u>14.90</u>	
	Balance	1.54
	Closing Balance as on 31-03-2011	1.54

Table 20: Details of NIEPMD – ADIP Account: ADIP Scheme Grants-in-aid

		Rs.in crores
1	Closing Balance of Rs.0.12 crores for the f/y 2009-10, was taken as opening balance for the f/y 2010-11	0.12
2	Grants-in-aid received under ADIP Scheme during the year 2010-11 from Ministry of Social Justice & Empowerment, New Delhi on 23.04.2010 (Rs.63,25,000), 29.12.2010(Rs.33,75,000) 15.02.2011(Rs.23,00,000) and 31.3.2011(Rs.1,80,00,000)	3.00
3	Receipts of Savings Bank interest for the year 2010-11	0.03
	Total	3.15
4	Less: Recurring expenses towards cost of Aids & Appliances, Assessment and Distribution camp expenses for the year 2010-11	
	Aids & Appliances for VI	0.01
	Aids & Appliances for OH	0.26
	Aids & Appliances for MR	0.05
	Aids & Appliances for HH	0.01
	ADIP Distribution Expenses	0.01
	<u>0.34</u>	
	0.34	0.34
	Closing Balance as on 31-03-2011	2.81



By SPEED POST

CAB/I/28-050/2011-12/86

Dated: 03-10-2011

To

The Secretary,
Ministry of Social Justice and Empowerment,
Room No. 613 'A' Wing,
Shastri Bhavan,
New Delhi - 110 001.



Sir,

Sub: Audit Report on the accounts of National Institute for Empowerment of Persons with Multiple Disabilities, Muttukadu, Chennai for the year 2010-11.

I am to forward herewith the Separate Audit Report on the accounts of National Institute for Empowerment of Persons with Multiple Disabilities, Muttukadu, Chennai for the year 2010-11 along with the statement of accounts for the year 2010-11.

Three copies of the Report for the years 2009-10 & 2010-11 as presented to Parliament may also be sent to this office.

The receipt of this letter with enclosures may kindly be acknowledged.

Yours faithfully,
(Sd....)

Deputy Accountant General / ISC II

दूरभाष / Phone : 2431 6400, 2431 6401, 2431 6402
2431 6403, 2431 6404, 2431 6405

तार / Telegram : "AUDITONE" Chennai

फैक्स / Fax : 044 - 2433 0012
तार / E-mail : pagciviltnp@bsnl.in

M/S

Endt.No.: CAB/I/28-050/2011-12/ 87

Dated: 03 -10-2011

Copy together with a copy of the certified accounts, copy of the Audit Report forwarded to the Director, National Institute for Empowerment of Persons with Multiple Disabilities, Muttukadu, Chennai 603 112. Three copies of the Audit Report and Annual Accounts in English and Hindi versions may please be sent to this office.

She is also requested to furnish the dates of presentation of the accounts to Parliament for the year 2010-11.


Deputy Accountant General / ISC II



Audit Report of the Comptroller & Auditor General of India on the Accounts of National Institute for the Empowerment of Persons With Multiple Disabilities, Muttukadu, Chennai for the year ended 31 March 2011

We have audited the attached Balance Sheet of National Institute for the Empowerment of Persons with Multiple Disabilities, Muttukadu, Chennai as at 31 March 2011 and the Income & Expenditure Account /Receipts & Payment Account for the year ended on that date under Section 20(1) of the Comptroller & Auditor General's (Duties, Powers & Conditions of Service) Act, 1971. The audit has been entrusted for the period upto 2015-2016. These financial statements are the responsibility of the Institute's management. Our responsibility is to express an opinion on these financial statements based on our audit.

2. This separate Audit Report contains the comments of the Comptroller & Auditor General of India (CAG) on the accounting treatment only with regard to classification, conformity with the best accounting practices, accounting standards and disclosure norms, etc. Audit observations on financial transactions with regard to compliance with the Law, Rules & Regulations (Propriety and Regularity) and efficiency-cum-performance aspects, etc., if any are reported through Inspection Report/CAG's Audit Reports separately.

3. We have conducted our audit in accordance with auditing standards generally accepted in India. These standards require that we plan and perform the audit to obtain reasonable assurance about whether the financial statements are free from material misstatements. An audit includes examining, on a test basis, evidences supporting the amounts and disclosure in the financial statements. An audit also includes assessing the accounting principles used and significant estimates made by management, as well as evaluating the overall presentation of financial statements. We believe that our audit provides a reasonable basis for our opinion.

4. Based on our audit, we report that:

- i We have obtained all the information and explanations, which to the best of our knowledge and belief were necessary for the purpose of our audit.
- ii The Balance Sheet and Income & Expenditure Account/Receipt & Payment Account dealt with by this report have been drawn up in the format approved by Ministry of Finance.

- iii In our opinion, proper books of accounts and other relevant records have been maintained by National Institute for Empowerment of Persons with Multiple Disabilities, Muttukadu, Chennai as required in the rules and regulations of the Institute in so far as it appears from our examination of such books.

iv We further report that:

The accounts of National Institute for Empowerment of Persons with Multiple Disabilities, Muttukadu, Chennai were revised based on draft audit observations and the revision in accounts resulted in decrease in excess of Income over expenditure by ₹ 2.71 crore

B Grants-in-aid

Out of the grants-in-aid of ₹ 14.83 crore (Plan: ₹ 11.83 crore ADIP A/c ₹ 3.00 crore) received during the year 2010-11, and ₹ 0.56 crore (NIEPMD Account ₹ 0.43 crore and ADIP a/c: ₹ 0.13 crore) being unspent balance of the previous year and ₹ 4.18 being the internal receipts, the Institute could utilize a sum of ₹ 15.22 crore (Plan: 14.88 crore ADIP A/c ₹ 0.34 crore) leaving a balance of ₹ 4.35 crore (NIEPMD Account : ₹ 1.54 crore, ADIP A/c: 2.81 crore) as at 31st March 2011.

C. Management letter

Deficiencies which have not been included in the Audit Report have been brought to the notice of National Institute for Empowerment of Persons with Multiple Disabilities, through a management letter issued separately for remedial / corrective action.

- v Subject to our observations in the preceding paragraphs, we report that the Balance Sheet and Income & Expenditure Account/Receipt & Payment Account dealt with by this report are in agreement with the books of accounts.

- vi In our opinion and to the best of our information and according to the explanations given to us, the said financial statements read together with the Accounting Policies and Notes on Accounts, and subject to the significant matters stated above and other matters mentioned in Annexure to this Audit Report give a true and fair view in conformity with accounting principles generally accepted in India.

- a. In so far as it relates to the Balance Sheet, of the state of affairs of National Institute for Empowerment of Persons with Multiple Disabilities, Muttukadu, Chennai as at 31 March 2011; and
- b. In so far as it relates to Income & Expenditure Account of the surplus for the year ended on that date.

For and on behalf of the C&AG of India



Principal Accountant General (Civil Audit)
Tamil Nadu and Puducherry

Place : Chennai
Date : 03.10.2011

Annexure to Separate Audit Report

1 Adequacy of Internal Audit System:

The Institute has an internal audit system commensurate with its size and nature.

2 Adequacy of Internal Control System:

There is an adequate internal control system..

3 Physical verification of fixed assets:

Physical verification of fixed assets is done at reasonable intervals.

4 Regularity in payment of statutory dues:

The Institute is regular in depositing Income Tax and Service Tax with the appropriate authorities.



Audit Officer

**NATIONAL INSTITUTE FOR EMPOWERMENT OF PERSONS
WITH MULTIPLE DISABILITIES (NIEPMD)**

(Govt. of India, Ministry of Social Justice & Empowerment)

East Coast Road, Muttukadu, Kovalam Post, Chennai - 603 112, Tamilnadu.

Index for Form of Financial Statement as on 31-03-2011

Sl. No.	Particulars	Page No
1.	Balance Sheet as at 31-03-2011	1
2.	Income & Expenditure Statement for the period ending 31-03-2011	2
3.	Receipts & payments Accounts for the period ending 31-03-2011	3
4.	Schedule 1 & 2	4
5.	Schedule 3	5
6.	Schedule 4	6
7.	Schedule 5 & 6	7
8.	Schedule 7	8
9.	Schedule 8	9
10.	Schedule 9 & 10	10
11.	Schedule 11	11 - 12
12.	Schedule 12 & 13	13
13.	Schedule 14 & 15	14
14.	Schedule 16 & 17	15
15.	Schedule 18 & 19	16
16.	Schedule 20, 20-A & 20-B	17
17.	Schedule 21	18
18.	Schedule 22 & 23	19
19.	Schedule 24	20 - 22
20.	Schedule 25	23
21.	Annexures I - IV	24 - 27



FORM OF FINANCIAL STATEMENTS (NON-PROFIT ORGANISATIONS)

Name of Entity: National Institute for Empowerment of Persons with Multiple Disabilities, Muttukadu
BALANCE SHEET AS AT 31st MARCH, 2011

	(Amount in Rs.)	
	Schedule	Current Year
CORPUS/CAPITAL FUND AND LIABILITIES		
CORPUS/CAPITAL FUND	1	289662047
RESERVES AND SURPLUS	2	0
EARMARKED/ENDOWMENT FUNDS	3	28084647
SECURED LOANS AND BORROWINGS	4	0
UNSECURED LOANS AND BORROWINGS	5	0
DEFERRED CREDIT LIABILITIES	6	0
CURRENT LIABILITIES AND PROVISIONS	7	48590832
TOTAL		300072884
ASSETS		
FIXED ASSETS	8	18116859
ADD: PRIOR PERIOD ADJUSTMENTS IN ASSETS	9	0
INVESTMENTS-FROM EARMARKED/ENDOWMENT FUNDS	10	0
INVESTMENTS-OTHERS	11	0
CURRENT ASSETS, LOANS, ADVANCES ETC.		431305337
MISCELLANEOUS EXPENDITURE		0
(to the extent not written off or adjusted)		
TOTAL		300072884
SIGNIFICANT ACCOUNTING POLICIES	24	
CONTINGENT LIABILITIES AND NOTES ON ACCOUNTS	25	

Neeradhine
DIRECTOR

P.A. (Accts)

FORM OF FINANCIAL STATEMENTS (NON-PROFIT ORGANISATIONS)
Name of Entity: National Institute for Empowerment of Persons with Multiple Disabilities, Muttukadu
INCOME AND EXPENDITURE ACCOUNT FOR THE PERIOD ENDED 31ST MARCH, 2011

(Amount in Rs.)

INCOME	Schedule	Current Year	Previous Year
Income from Sales/Services	12	0	0
Grants/Subsidies	13	123713816	90822189
Fees/Subscriptions	14	1239470	677388
Income from Investments (Income on Invest. From earmarked/ endow. Funds transferred to Funds)	15	0	0
Income from Royalty, Publication etc.	16	0	0
Interest Earned	17	2420	7915381
Other Income	18	109457	210468
Increase/(decrease) in stock of Finished goods and works-in-progress	19	0	0
TOTAL (A)		125065163	99625426
EXPENDITURE			
Expenditure on Program & Services	20	7360820	4323663
Establishment Expenses	20A	17563477	16144547
Other Program Expenditure	20B	0	5916189
Other Administrative Expenses etc.	21	5919757	5605369
Expenditure on Grants, Subsidies etc.	22	0	0
Interest	23	0	0
Depreciation (Net Total at the year-end - corresponding to Schedule 8)		1366703	1111550
TOTAL (B)		32210757	33101318
Balance being excess of Income over Expenditure (A-B)		92854406	66524108
Transfer to Special Reserve (Specify each)			
Transfer to/from General Reserve			
BALANCE BEING SURPLUS/(DEFICIT)			
CARRIED TO CORPUS/CAPITAL FUND			
SIGNIFICANT ACCOUNTING POLICIES	24		
CONTINGENT LIABILITIES AND NOTES ON ACCOUNTS	25		

P.A. (Actts)

Neeadhar
DIRECTOR

National Institute for Empowerment of Persons with Multiple Disabilities, Muttukadu, Chennai.
RECEIPTS AND PAYMENTS ACCOUNT FOR 2010-11

Sl.No.	Receipts	2009-10	2010-11	SI.No	Payments	2009-10	2010-11
1	Opening balance						
2	NIEPMD Main a/c	4446154	4312384	1	Salaries & Wages	16144547	17563477
3	NIEPMD ADIP a/c	5736285	1242271	2	Administrative Expenses	5478333	5931793
4	Grants-in-aid (NIEPMD a/c)	90000000	118292000	3	Expenditure on Programme & Services	4323663	7360820
5	Grants-in-aid (ADIP a/c)	1250000	30011000	4	Expenditure on ADIP Scheme	5916189	3379790
6	Tuition Fees	338443	780470	5	Loans & Advances paid to staff		
7	Examination Fees	71700	27650		Motor Cycle Advance	0	30000
8	Miscellaneous Receipts / Donation	0	4057		Computer Advance	120000	210000
9	Sale of News Paper	7113	1263		Festival Advance	21000	9000
10	Loans & Advances Recoveries				LTC Advance	4717	0
11	T.A. Advance	19400	58700		Flood Advance	0	0
12	Flood Advance	26400	26400		Medical Advance	45000	0
13	Loan on RIP Deposit Account	0	26000000	6	Caution Deposit for TNEU	40770	1000000
14	Motor Cycle Advance	113600	92100	7	T.A. Advance	58700	0
15	Computer Advance	86000	115500	8	Capital Section (Fixed Assets)	663603	1027843
16	LTC Advance	0	4717	9	Advances with CPWD	65000000	115000000
17	Festival Advance	8100	19200	10	Receipts of CRC Bhopal	0	0
18	Medical Advance	0	45000	11	Amount deposited on term deposit & Deposit reinvested	230976452	155177941
19	Sale of Scraps	126000	0	12	Savings Bank account with Indian Bank	4312384	15375555
20	Registration & Application fees	236195	412800	13	Savings Bank account - ADIP Scheme	1242271	28064647
21	Sale of Study Materials/ Tender forms	8600	600	14	New Pension - RIP Deposit and RD A/c	4036350	6024275
22	Guest House Receipts	33675	4225	15	Prepaid expenses - Insurance	478582	659988
23	Receipts of User charges	12880	63412	16	Advance paid to Book Sellers	0	10397
24	Training Fees	31050	18550	17	Advance with Sense International	0	327553
25	Security Deposit	105900	76000	18		0	300000
26	Service Graduity	8106	0	19		0	0
27	Interest on SB a/c - Main a/c	111751	233633				
28	Interest on SB a/c -ADIP a/c	172175	236773				
29	Interest on Loans	4300	2420				
30	Receipts for NPS Contribution	4036350	6024275				
31	Receipts of GPF	478582	659988				
32	Receipts of RCI and Indian Bank	0	113157				
33	Hostel Maintenance Charges	22200	35900				
34	Term Deposit maturity & Interest	0	0				
35	Received and Deposit Reinvested	231401602	168508434				
	Total	338892561	357472879	Total		338892561	357472879

P.A. (Actts)

Neeadhar
DIRECTOR



FORM OF FINANCIAL STATEMENTS (NON-PROFIT ORGANISATIONS)
 Name of Entity: National Institute for Empowerment with Persons with Multiple Disabilities, Muttukadu
SCHEDULES FORMING PART OF BALANCE SHEET AS AT 31ST MARCH, 2011.

(Amount in Rs.)

	Current year		Previous Year	
	Fund XX	Fund YY	Fund ZZ	Fund ZZ
SCHEDULE 1 - CORPUS/CAPITAL FUND:				
Balance as at the beginning of the year				218082344
Add: Unspent Grant balance as on 31.03.2010 in NIEPMD - Main a/c = 4312384			289662047	10182439
			4312384	
Less: Adjustment of previous year grants, as the fixed assets are deleted from Schedule-8 (transfer to other organizations)				228264783
Add: Capital Expenditure for purchase of Assets			293974431	
Add/(Deduct): Balance of net income/(expenditure) transferred from the (Add) Income and Expenditure Account			293974431	228264783
Less: Unspent grant-Balance as on 31-03-2011 in NIEPMD Main. = 15375555			1293435	427811
			92854406	66524108
			-15375555	-5554655
BALANCE AS AT THE YEAR-END			372746717	289662047
	NIL	NIL	NIL	NIL
SCHEDULE 2 - RESERVES AND SURPLUS				
1. Capital Reserve:				
Addition during the year				
Less: Deductions during the year			0	0
2. Revaluation Reserve:				
As per last Account				
Addition during the year				
Less: Deductions during the year			0	0
3. Special Reserve:				
As per last Account				
Addition during the year				
Less: Deductions during the year			0	0
4. General Reserve:				
As per last Account				
Addition during the year				
Less: Deductions during the year			0	0
TOTAL	NIL	NIL	NIL	NIL

FORM OF FINANCIAL STATEMENTS (NON-PROFIT ORGANISATIONS)
 Name of Entity: National Institute for Empowerment of Persons with Multiple Disabilities, Muttukadu
SCHEDULE 3 - EARMARKED/ENDOWMENT FUNDS As At 31-03-2011

	FUND-WISE BREAK UP				TOTALS	
	Fund WW	Fund XX	Fund YY	Fund ZZ	Current Year	Previous Year
SCHEDULE 3 - EARMARKED/ENDOWMENT FUNDS						
ADIP Scheme						
a) Opening balance of the funds					1242271	5736285
b) Additions to the Funds:						
i. Grants-in-aid					30011000	1250000
ii. Income from investments made on account of funds					236773	172175
iii. Other additions (Specify nature)					0	0
TOTAL (a+b)	NIL	NIL	NIL	NIL	31490044	7158460
C. Utilisation/Expenditure towards objectives of funds						
I. Capital Expenditure						
- Fixed Assets					0	0
- Others					0	0
Total					0	0
ii. Revenue Expenditure						
- Salaries, Wages and allowances etc.						
- Aids & Appliances for PWD Expenses					3379790	5916189
- Advances with NIEPMD - Main account					25607	0
- Other Administrative and HRD Expenses					0	0
Total					3405397	5916189
TOTAL (c)	NIL	NIL	NIL	NIL	3405397	5916189
NET BALANCE AS AT THE YEAR-END (a + b - c)	NIL	NIL	NIL	NIL	28084647	1242271

Notes

- 1) Disclosures shall be made under relevant heads based on conditions attaching to the grants
- 2) Plan Funds received from the Central/State Governments are to be shown as separate Funds and not to be mixed up with any other Funds



FORM OF FINANCIAL STATEMENTS (NON-PROFIT ORGANISATIONS)
Name of Entity: National Institute for Empowerment of Persons with Multiple Disabilities, Muttukadu
SCHEDULES FORMING PART OF BALANCE SHEET AS AT 31ST MARCH, 2011

(Amount in Rs.)

	Current Year		Previous Year
SCHEDULE 4 - SECURED LOANS AND BORROWINGS:			
1. Central Government			0
2. State Government (Specify)			0
3. Financial Institutions			0
a) Term Loans			0
b) Interest accrued and due			0
4. Banks:			
a) Term Loans			0
- Interest accrued and due			0
b) Other Loans (specify)			0
- Interest accrued and due			0
5. Other Institutions and Agencies			0
6. Debentures and Bonds			0
7. Others (Specify)			0
TOTAL	NIL	NIL	NIL
<i>Note: Amounts due within one year.</i>			

86



FORM OF FINANCIAL STATEMENTS (NON-PROFIT ORGANISATIONS)
Name of Entity: National Institute for Empowerment of Persons with Multiple Disabilities, Muttukadu
SCHEDULES FORMING PART OF BALANCE SHEET AS AT 31ST MARCH, 2011

(Amount in Rs.)

	Current Year		Previous Year
SCHEDULE 5 - UNSECURED LOANS AND BORROWINGS			
1. Central Government	0	0	0
2. State Government (Specify)	0	0	0
3. Financial Institutions	0	0	0
4. Banks:			
a) Term Loans	0	0	0
b) Other Loans (specify)	0	0	0
5. Other Institutions and Agencies	0	0	0
6. Debentures and Bonds	0	0	0
7. Fixed Deposits	0	0	0
8. Others (Specify)	0	0	0
TOTAL	NIL	NIL	NIL
<i>Note: Amounts due within one year.</i>			
SCHEDULE 6 - DEFERRED CREDIT LIABILITIES			
a) Acceptances secured by hypothecation of capital equipment and other assets	0	0	0
b) Others	0	0	0
TOTAL	NIL	NIL	NIL
<i>Note: Amounts due within one year.</i>			

87

FORM OF FINANCIAL STATEMENTS (NON-PROFIT ORGANISATIONS)
Name of Entity: National Institute for Empowerment of Persons with Multiple Disabilities, Muttukadu
SCHEDULES FORMING PART OF BALANCE SHEET AS AT 31ST MARCH, 2011

		(Amount in Rs.)	
SCHEDULE 7 - CURRENT LIABILITIES AND PROVISIONS		Current Year	Previous Year
A. CURRENT LIABILITIES			
1. Acceptances			
2. Sundry Creditors			
a) For Goods			
b) Others (Caution Money Deposit)		237500	161500
3. Advances Received			
4. Interest accrued but not due on :			
a) Secured Loans/borrowings			
b) Unsecured Loans/borrowings			
5. Statutory Liabilities:			
a) Overdue			
b) Others: New Pension Contribution		6024275	4036350
c) Unspent grant - balance as on 31-03-2011 in NIEPMD Main		15375555	43,12,384
d) NIEPMD - ADJP a/c		25607	1242271
6. Other current Liabilities(Receipts of GPF(S) & (A)		659988	478582
7. Loan on RIP Deposit		26000000	
8. Receipts of RCI & Indian Bank (Rs.102199 + 10958)		113157	
7. Service Gratuity		39750	39750
TOTAL (A)		48475832	10270837
B. Provisions			
1. For Taxation		0	0
2. Gratuity		0	0
3. Superannuation/Pension		0	0
4. Accumulated Leave Encashment		0	0
5. Trade Warranties/Claims		0	0
6. Others (Specify) - Audit Fees Payable		115000	140000
TOTAL (B)		115000	140000
TOTAL (A + B)		48590832	10410837

SCHEDULES FORMING PART OF BALANCE SHEET AS AT 31.03.2011

SCHEDULE - 8 - FIXED ASSETS	GROSS BLOCK						DEPRECIATION		NET BLOCK	
	Cost/valuation as at beginning of the year	Additions during the year	Deductions during the year	Cost/valuation at the year end	As at the beginning of the year	On deprecations upto the year	Total up to the Year-end	As at the current year-end	As at the previous year-end	
1	2	3	4	5 (2+3-4)	6	7	8	9 (6+7-8)	10 (5-9)	11
A. FIXED ASSETS										
1) LAND										
b) Leasehold										
2) BUILDINGS										
a) On Freehold Land	12905178	0	0	12905178	719184	243720	0	962904	11942274	12185994
b) On Leasehold Land										
c) Ownership Flats/Premises not belonging to the entity										
3) PLANT MACHINERY & EQUIPMENT	3069912	710531	0	3780443	732905	249462	0	982367	2798076	2337007
4) VEHICLES	1180263	0	0	1180263	567574	121903	0	489477	690786	812689
5) FURNITURE, FIXTURES	2089687	87690	0	2177377	605842	151296	0	757138	1420239	1483845
6) OFFICE EQUIPMENT	940234	30421	0	970655	213287	75380	0	288667	681988	726947
7) COMPUTER/PERIPHERALS	1060591	72548	0	1133139	416946	132697	0	549643	583496	643645
8) ELECTRIC INSTALLATIONS										
9) LIBRARY BOOKS	1367542	392245	0	1759787	1367342	392245	0	1759587	0	0
10) TUBEWELLS & W SUPPLY										
11) OTHER FIXED ASSETS										
TOTAL OF CURRENT YEAR	22613207	1293435	0	23906642	4423080	1366703	0	5789783	18116859	18190127
PREVIOUS YEAR										
B. CAPITAL WORK-IN-PROGRESS										
Note: No assets has been transferred or received during the year 2010-11										
TOTAL										
<i>(Note to be given as to cost of assets on hire purchase basis included above)</i>										

FORM OF FINANCIAL STATEMENTS (NON-PROFIT ORGANISATIONS)
Name of Entity: National Institute for Empowerment of Persons with Multiple Disabilities, Muttukadu
SCHEDULES FORMING PART OF BALANCE SHEET AS AT 31ST MARCH, 2011

(Amount in Rs.)

SCHEDULE 9 - INVESTMENTS FROM EARMARKED/ENDOWMENT FUNDS		Current Year	Previous Year
1. In Government Securities			
2. Other approved Securities			
3. Shares			
4. Debentures and Bonds			
5. Subsidiaries and Joint Ventures			
6. Others (to be specified)			
TOTAL		NIL	NIL

90

SCHEDULE 10 - INVESTMENTS - OTHERS		Current Year	Previous Year
1. In Government Securities			
2. Other approved Securities			
3. Shares			
4. Debentures and Bonds			
5. Subsidiaries and Joint Ventures			
6. Others (to be specified)			
TOTAL		NIL	NIL

FORM OF FINANCIAL STATEMENTS (NON-PROFIT ORGANISATIONS)
Name of Entity: National Institute for Empowerment of Persons with Multiple Disabilities, Muttukadu
SCHEDULES FORMING PART OF BALANCE SHEET AS AT 31ST MARCH, 2011

(Amount in Rs.)

SCHEDULE 11 - CURRENT ASSETS, LOANS, ADVANCES ETC.		Current year	Previous Year
A. CURRENT ASSETS:			
1. Inventories:			
a) Stores and Spares			
b) Loose Tools			
c) Stock-in-trade			
Finished Goods			
Work-in-progress			
Raw Materials			
2. Sundry Debtors:			
a) Debts Outstanding for a period exceeding six months			
b) Others - Security Deposit paid to Electricity Office.	40770	40770	40770
c) Other - Security Deposit for B.Ed to TN Teachers University Education	1000000	1000000	
3. Cash balances in hand I.I. (including cheques/drafts and imprest)	0	0	0
4. Bank Balances:			
a) With Scheduled Banks:			
- On Current Accounts			
- On Deposit Accounts (includes margin money) Term Deposit with Indian Bank	137388016		144807037
- On Savings Accounts with Indian Bank (NIEPMD - Main a/c)	15375555		4312384
- On Savings Accounts with Indian Bank (NIEPMD - ADIP a/c)	28084647		1242271
- SBa/c with Indian Bank (GPFa/c)	659988		478382
- On Term Deposit & Recurring Deposit - New Pension Scheme Account.	6024275	18752481	4036350
b) With non-Scheduled Banks:			
- On Current Accounts			
- On Deposit Accounts (includes margin money)			
- On Savings Accounts			
5. Post Office - Savings Accounts			
TOTAL (A)	188573251	188573251	154917394

91



FORM OF FINANCIAL STATEMENTS (NON-PROFIT ORGANISATIONS)
Name of Entity: National Institute for Empowerment with Persons with Multiple Disabilities, Muttukadu
SCHEDULES FORMING PART OF BALANCE SHEET AS AT 31ST MARCH, 2011

(Amount in Rs.)

	Current year		Previous Year
SCHEDULE 11 - CURRENT ASSETS, LOANS, ADVANCES ETC. (Contd.)			
B. LOANS, ADVANCES AND OTHER ASSETS			
1. Loans:			
a) Staff (Motor Cycle, Computer, TA, Flood Advance and Festival Advance)	519800	519800	632417
b) Other Entities engaged in activities/objectives similar to that of the Entity			
c) Others (specify)			632417
2. Advances and other amounts recoverable in cash or in kind or for value to be received:			
a) On Capital Account (Advances with CPWD)	238430860		123430860
b) Prepayments : Insurance for School Bus	10397		12,964
c) Others (Advance for Indian book sellers for purchase of journals)	327553		2,65,792
d) Others - Advance to SENSE International India Ltd, Ahmedabad.	3000000	239068810	12,37,09,616
3. Income Accrued:			
a) On Investments from Earmarked/Endowment Funds			
b) On Investments - Others			
c) On Loans and Advances			
d) Others/Interest accrued from Term Deposit account (Interest receivable) (includes income due unrealised-Rs.)	3143476	31,43,476	2623330
4. Claims Receivable			
TOTAL (B)	242732086	242732086	126965363
TOTAL (A + B)		431305337	281882757

FORM OF FINANCIAL STATEMENTS (NON-PROFIT ORGANISATIONS)
Name of Entity: National Institute for Empowerment of Persons with Multiple Disabilities, Muttukadu
SCHEDULES FORMING PART OF INCOME & EXPENDITURE AS AT 31ST MARCH, 2011

(Amount in Rs.)

	Current Year	Previous Year
SCHEDULE 12 - INCOME FROM SALES/SERVICES		
1) Income from Sales		
a) Sale of Finished Goods		
b) Sale of Raw Material	0	0
c) Sale of Scraps		
2) Income from Services		
a) Labour and Processing Charges		
b) Professional/Consultancy Services		
c) Agency Commission and Brokerage		
d) Maintenance Services (Equipment/Property)		
e) Others (Specify)		
TOTAL	NIL	NIL
SCHEDULE 13 - GRANTS/SUBSIDIES		
(Irrevocable Grants & Subsidies Received)		
1) a. Central Government - NIEPMD - Main Account	118292000	90000000
1) b. Central Government - NIEPMD - ADJP Account	0	1250000
2) State Government(s)		
3) Government Agencies		
4) Institutions/Welfare Bodies		
5) International Organisations		
6) Others (Specify) LESS: Capital Expenditure for 2009-10	-1293435	-427811
7) ADD: Interest earned from Term Deposit and Savings Account	6715251	
TOTAL	123713816	90822189

FORM OF FINANCIAL STATEMENTS (NON-PROFIT ORGANISATIONS)
 Name of Entity: National Institute for Empowerment with Persons with Multiple Disabilities, Muttukadu
SCHEDULES FORMING PART OF INCOME & EXPENDITURE FOR THE PERIOD/YEAR ENDED 31ST MARCH, 2011

	(Amount in Rs.)	
	Current year	Previous Year
SCHEDULE 14 - FEES/SUBSCRIPTIONS		
1) Affiliation Fee	0	0
2) Course Fee (Diploma, Degree, PG, and Certificate Courses) Tuition Fees & Exam Fees	826670	410143
3) Entrance Fees		
4) Annual Fees/Subscriptions		
5) Seminar/Program Fees (Application & Registration Fees)	412800	-367245
6) Consultancy Fees		
7) Others (specify)		
TOTAL	1239470	677388

Note - Accounting Policies towards each item are to be disclosed

	Investment from			
	Earmarked Fund		Investment-Others	
	Current year	Previous Year	Current year	Previous Year
SCHEDULE 15 - INCOME FROM INVESTMENTS (Income on Invest. From Earmarked/Endowment Funds transferred to Funds)				
1) Interest				
a) On Govt. Securities				
b) Other Bonds/Debentures				
2) Dividends:				
a) On Shares				
b) On Mutual Fund Securities				
3) Rents				
4) Others (Specify)				
TOTAL	NIL.	NIL.	NIL.	NIL.
TRANSFERRED TO EARMARKED/ENDOWMENT FUNDS				

FORM OF FINANCIAL STATEMENTS (NON-PROFIT ORGANISATIONS)
 Name of Entity: National Institute for Empowerment of Persons with Multiple Disabilities, Muttukadu
SCHEDULES FORMING PART OF INCOME & EXPENDITURE FOR THE PERIOD/YEAR ENDED 31ST MARCH, 2011

	(Amount in Rs.)	
	Current Year	Previous Year
SCHEDULE 16 - INCOME FROM ROYALTY, PUBLICATION ETC.		
1) Income from Royalty	0	0
2) Income from Publications	0	0
3) Others (specify)		
TOTAL	0	0

	(Amount in Rs.)	
	Current Year	Previous Year
SCHEDULE 17 - INTEREST EARNED		
1) On Term Deposits:		
a) With Scheduled Banks	0	7495505
b) With Non-Scheduled Banks		
c) With Institutions		
d) Others		
2) On Savings Accounts:		
a) With Scheduled Banks Main a/c	0	243401
b) With Non-Scheduled Banks ADIP a/c	0	172175
c) With Institutions		
d) Others		
3) On Loans:		
a) Employees/Staff	2420	4300
b) Others	0	0
4) Interest on Debtors and Other Receivables	0	0
TOTAL	2420	7915381

Note: Tax deducted at source to be indicated

FORM OF FINANCIAL STATEMENTS (NON-PROFIT ORGANISATIONS)
Name of Entity: National Institute for Empowerment of Persons with Multiple Disabilities, Muttukadu
SCHEDULES FORMING PART OF INCOME & EXPENDITURE FOR THE PERIOD/YEAR ENDED 31ST MARCH, 2011

	(Amount in Rs.)	
	Current Year	Previous Year
SCHEDULE 18 - OTHER INCOME		
1) Profit on Sale/disposal of Assets		
a) Owned assets		
b) Assets acquired out of grants, or received free of cost		
2) Expost Incentives realized	0	0
3) Fees for Miscellaneous Services		
4) Refunds	0	0
5) Miscellaneous Income	109457	50967
TOTAL	109457	50967

96

	Current Year	Previous Year
SCHEDULE 19 - INCREASE/(DECREASE) IN STOCK OF FINISHED GOODS AND WORK IN PROGRESS		
a) Closing stock		
- Finished Goods		
- Work-in-progress		
b) Less: Opening Stock		
- Finished Goods		
- Work-in-progress		
NET INCREASE/(DECREASE) [a-b]	NIL	NIL



FORM OF FINANCIAL STATEMENTS (NON-PROFIT ORGANISATIONS)
Name of Entity: National Institute for Empowerment of Persons with Multiple Disabilities, Muttukadu
SCHEDULES FORMING PART OF INCOME & EXPENDITURE FOR THE PERIOD/YEAR ENDED 31ST MARCH, 2011

	(Amount in Rs.)	
	Current Year	Previous Year
SCHEDULE 20 - EXPENDITURE ON PROGRAM AND SERVICES		
Human Resource Development	2287350	1403223
Research and Development	327335	0
Development of Services	3211587	2401662
Consultancy Services	0	0
Documentation and Dissemination(Creation of Awareness	883694	518778
Extension and Outreach Services (National Workshop on UNCRPD)	324112	0
North Eastern Region Programme expenses	326742	0
Regional Sports Meet & Foundation Stone Laying Programme	0	0
Total	7360820	4323663

97

	Current Year	Previous Year
SCHEDULE 20A - ESTABLISHMENT EXPENSES		
a) Salaries and Wages	8404560	9835432
b) Allowances and Bonus	8189926	5031965
c) Contribution to Provident Fund	0	0
d) Contribution to Other Fund(Employer contribution to New Pension Scheme)	868046	1195338
e) Encashment of Earned Leave	100945	81812
f) Others (specify): Payment to P&G A/c.	0	0
TOTAL	17563477	16144547

	Current Year	Previous Year
SCHEDULE 20B - OTHER PROGRAM EXPENSES		
a) North East States	0	0
b) ADIP Scheme	3379790	5916189
c) Pilot Project	0	0
d) Other expenditure	0	0
e) Transfer to ADIP Account	0	0
TOTAL	3379790	5916189

FORM OF FINANCIAL STATEMENTS (NON-PROFIT ORGANISATIONS)
Name of Entity: National Institute for Empowerment of Persons with Multiple Disabilities, Muttukadu
SCHEDULES FORMING PART OF INCOME & EXPENDITURE FOR THE PERIOD/YEAR ENDED 31ST MARCH, 2011
 (Amount in Rs.)

SCHEDULE 21 - OTHER ADMINISTRATIVE EXPENSES ETC.	Current Year	Previous Year
1. Expenditure on Support Services	1943013	1733252
2. Electricity and Power	166272	200218
3. Insurance	28547	5629
4. Repairs & Maintenance of buildings	226294	393791
5. Repairs and Maintenance of Office Equipments	192858	163818
6. Vehicles Hire Charges	732013	283145
7. Repairs & Maintenance of School Bus(Diesel Rs.97595/- + Maintenance Rs.81486/-	179081	
7. Repairs & Maintenance of Tata Sumo(Diesel Rs.108859/- + Maintenance Rs.31667/-	140526	344126
8. Postage & Telephone charges	380095	319790
9. Printing and Stationery	331299	438616
10. Travelling and conveyance Expenses	863103	622604
11. Auditors Remuneration	44920	299800
12. Internal Auditor - Consultation Charges	44120	84120
13. Repairs & maintenance of Plants & Machinery	58757	0
14. Advertisement and Publicity	335863	563533
15. Repairs & Maintenance of Computers	107258	0
16. Miscellaneous Expenditure	145738	152927
TOTAL	5919757	5605369

98

FORM OF FINANCIAL STATEMENTS (NON-PROFIT ORGANISATIONS)

Name of Entity: National Institute for Empowerment of Persons with Multiple Disabilities, Muttukadu
SCHEDULES FORMING PART OF INCOME & EXPENDITURE FOR THE PERIOD/YEAR ENDED 31ST MARCH, 2011
 (Amount in Rs.)

SCHEDULE 22 - EXPENDITURE ON GRANTS, SUBSIDIES ETC.	Current Year	Previous Year
a) Grants given to Institutions/Organisations		
b) Subsidies given to Institutions/Organisations		
TOTAL	NIL	NIL
<i>Note: Name of the Entities, their Activities along with the amount of Grants/Subsidies are to be disclosed</i>		

99

SCHEDULE 23 - INTEREST	Current Year	Previous Year
A) On Fixed Loans		
b) On Other Loans (including Bank Charges		
c) Others (Specify)		
.	NIL	NIL



Schedule: 24

**NATIONAL INSTITUTE FOR EMPOWERMENT OF PERSONS
WITH MULTIPLE DISABILITIES, CHENNAI**

ACCOUNTING POLICIES

Accounting policies of the Institute to be followed from the accounting the year of 2005-06 and onwards in order to maintain proper books of account with respect to:

- a) All sums of money received and expended and matters in respect of which the Receipts and Expenditure took place;
 - b) All sums of Revenues / Income received / recoverable and expenditure paid/payable;
 - c) All sales & purchases of goods; and
 - d) All Assets & Liabilities; to give a true and fair view of the affairs of the Institute.
1. The books of Accounts of the Institute will be kept on accrual basis to ensure the accomplishment of its essential features namely (a) revenue is recognized as it is earned irrespective of whether cash is received or not; and (b) Expenses are matched against such revenues.
 2. Since the books of accounts are to be kept on accrual basis the cut-off date will be reckoned as 15th April.
 3. The Books of Accounts of the Institute are to be kept according to the Double Entry System of Book Keeping.
 4. For proper identification & maintenance, codification of accounting heads has to be carried out.
 5. The Statement of Accounts of the Institute are to be prepared in the following format.
 - i) Receipts and Payments Account for the year 2010-11.
 - ii) Income and Expenditure Account for the year 2010-11.
 - iii) Balance Sheet as on 31st March 2011.

Explanation:

i) Receipts and Payments Account

- a) All the actual Receipts are accounted for
- b) All the actual Payments are accounted for

ii) Income and Expenditure Account:

In addition to account of each item of actual Receipts & Payments the accrued income and outstanding liabilities are to be added to each head of Account for proper presentation and to know the overall position of income and expenditure.

iii) Balance Sheet as on 31st March:

Liabilities

- 1) Capital
- 2) Reserves
- 3) Secured Loans
- 4) Unsecured Loans
- 5) Current Liabilities

Assets

- 1) Fixed Assets less Depreciation
- 2) Investments
- 3) Current Assets, Loans & Advances
- 4) Miscellaneous expenditure (to the extent not written off)
- 5) Income and Expenditure Account

Note: Schedules forming part of the Accounts wherever necessary are to be prepared and enclosed to the Accounts.

6. Depreciation:

The following guidelines are to be followed while providing the depreciation:

- i) To provide depreciation on Fixed Assets acquired on or after 1-4-2005 on yearly basis.
- ii) To adopt the system of written down value method.

iii) For Assets acquired up to the month of September during the financial year full depreciation is worked out at the prescribed percentage. For assets acquired from the month of October to February depreciation is worked @ 50% of prescribed percentage. For assets acquired on March, Nil depreciation.

iv) The life of each asset and rates of depreciation under "Written Down Value Method" are indicated hereunder:

a) Land	:	No depreciation
b) Buildings	:	50 years of life 2% depreciation
c) Plant, Machinery & Equipments	:	10 years 10% depreciation
d) Vehicles	:	6 years 15% depreciation
e) Furniture & Fixtures	:	10 years 10% depreciation
f) Office Equipments	:	10 years 10% depreciation
g) Computer & Peripherals	:	5 years 20% depreciation
h) Library Books	:	No Life 100% depreciation

Neeradha
(Dr. Neeradha Chandra Mohan)
Director

Schedule: 25

**NATIONAL INSTITUTE FOR EMPOWERMENT OF PERSONS
WITH MULTIPLE DISABILITIES, CHENNAI.**

NOTES FORMING PART OF THE ANNUAL ACCOUNTS

1. The Annual Accounts were compiled in the format of Financial Statements for the Central Autonomous Bodies (Non-profit organizations and similar Institutions).
 - a) Balance Sheet as at 31-03-2011.
 - b) Income and Expenditure Account for the year 2010-11
 - c) Schedules 1-25 as per the format.
 - d) Receipts & payments account for the year 2010-11.
2. The Accounts have been prepared on accrual basis,
3. Depreciation is being provided on written down value method.
4. Accounting policies have been prepared and they are being followed.
5. Out of the total receipts of Rs.19,56,10,675/- (which includes opening balances, grant-in-Aid, grants for specific purposes, receipts from other organizations, loans and advances and internal receipts), the amount spent on various activities(including Advance to CPWD Rs.11.50 crores) is Rs.15,21,50,473/- leaving balance of Rs.4,34,60,202/- in NIEPMD Main Savings Account is Rs.1,53,75,555/- and in NIEPMD ADIP Savings account is Rs.2,80,84,647/-.
6. The physical verification of the assets and stores for the year 2010-11 is in progress.
7. The utilization certificates for the grants released by the Ministry have been furnished and there are no pending utilization certificates.
8. The figures have been classified wherever necessary.

Neeradha
(Dr. Neeradha Chandra Mohan)

Director



National Institute for Empowerment of Persons with Multiple Disabilities
Chennai

Details of Pay & Allowances for the year 2010-11

Sl.No.	Particulars	2009-10	2010-11
1	Pay Account	7645624	6405591
2	Dearness Pay	-1308976	0
3	Grade Pay	3194496	1766469
4	Non-Practising Pay	283748	208764
5	Personal pay	20540	23736
6	Total on Salaries	9835432	8404560
7	Newspaper Allowance	15518	145339
8	House Rent Allowances	2147468	2420052
9	City Compensatory Allowances	0	0
10	Dearness Allowances	1194905	3653300
11	Transport Allowances	876343	759556
12	Washing Allowances	660	600
13	Medical Claims Reimbursement	457419	681124
14	Ad-hoc Bonus	37994	16694
15	Leave Salary & Pension Contribution	83835	116591
16	LTC	69329	236756
17	Book Allowance	24000	19200
18	Reimbursement of Tuition fees	124494	140714
	Total on Allowances and Bonus	5031965	8189926
19	Encashment of Earned Leave	81812	100945
20	New Pension Contribution	1195338	868046
	Total	16144547	17563477

National Institute for Empowerment of Persons with Multiple Disabilities
Chennai

Details of Procurement of Capital Assets for Receipts & Payments

Sl. No.	Particulars	2009-10	2010-11
1	Land & Buildings	0	0
2	Computer & Peripherals	123452	72548
3	Plant & Machinery	99277	710531
4	Office Equipment	72614	30421
6	Motor Vehicles	0	0
7	Furniture & Fixtures		87690
7	Library Books	92836	126453
	Total	388179	1027643

National Institute for Empowerment of Persons with Multiple Disabilities
Details of Administrative Expenses for Income & Expenditure Account

Sl. No.	Particulars	2009-10	2010-11
1	Support Services (Security & Cleaning)	1733252	1943013
2	Travelling & Conveyance Expenses	622604	861103
3	Vehicle Hire Charges	283145	732013
4	Telephone & Postage Charges	319790	380095
5	Printing & Stationery	438616	331299
6	Advertisement & Publicity	563533	358863
7	Hospitality	20346	5994
8	Electricity Charges	290218	166272
9	Repairs & Maintenance of Buildings	393791	226294
10	R & M of TATA Sums	141399	140526
11	Publication & Periodicals	27960	24950
12	Bank Charges	3765	4005
13	R & M of School Bus	202727	179081
14	Miscellaneous Expenditure	94316	85359
15	Audit fees	383920	89040
16	Renovation & Repairs of Temporary building	0	0
17	Insurance	5629	28547
18	Legal Fees	6540	25430
19	R&M of Computers	113200	107258
20	R&M of Plant & Machinery	8834	58757
21	R&M of Office Equipments	41784	192858
	Total	5608369	5919757

National Institute for Empowerment of Persons with Multiple Disabilities, Chennai
Details of Administrative Expenses for Receipts & Payments Account

Sl. No.	Particulars	2009-10	2009-10
1	Support Services (Security & Cleaning)	1733252	1943013
2	Travelling & Conveyance Expenses	622604	861103
3	Vehicle Hire Charges	283145	732013
4	Telephone & Postage Charges	320821	379064
5	Printing & Stationery	438616	331299
6	Advertisement & Publicity	563533	358863
7	Hospitality	20346	5994
8	Electricity Charges	290218	166272
9	Repairs & Maintenance of Buildings	393791	226294
10	R & M of TATA Sums	141399	140526
11	Publication & Periodicals	27960	24950
12	Bank Charges	3765	4005
13	R & M of School Bus	202727	179081
14	Miscellaneous Expenditure	94316	85359
15	Audit fees	243920	114040
16	Renovation & Repairs of Temporary building	0	0
17	Insurance	17562	16614
18	Legal Fees	6540	25430
19	R&M of Computers	113200	107258
20	R&M of Plant & Machinery	8834	58757
21	R&M of Office Equipments	41784	192858
	Total	5478333	5931793

National Institute for Empowerment of Persons with Multiple Disabilities, Chennai
Details of Expenditure on Programme & Services under Schedule No 20A.

Sl. No.	Particulars	2009-10	2010-11
1	Human Resource Development		
	Long Term Training Programmes	232361	911391
	Short Term Training Programmes	1031450	1026443
2	Research & Development	0	327335
3	Development of Service Models	2401662	3211587
4	Creation of Awareness Programme	518778	881694
5	National Workshop on UNCRPD	0	324122
6	North Eastern Region Programme	0	326742
7	HRD Services	130548	213626
8	Staff Welfare Expenses	0	0
9	Regional Sports Meet	0	0
10	Medicines a/c	8864	136880
	Total	4323663	7360820

**National Institute for Empowerment of Persons with Multiple Disabilities
Chennai**
Details of Expenditure under ADIP Scheme under Schedule 20B

Sl. No.	Particulars	2009-10	2010-11
1	Aids & Appliances for V.L. persons Expenditure	113440	7350
2	Aids & Appliances for O.H. persons Expenditure	4842907	2564376
3	Aids & Appliances for M.R. persons Expenditure	476233	482027
4	Aids & Appliances for H.H. persons Expenditure	73400	127400
5	Samarthya 2008 Expenditure	0	0
6	ADIP Identification Camp Expenditure	117271	21336
7	ADIP Distribution Camp Expenditure	292938	177301
	Total Expenditure	5916189	3379790

**National Institute for Empowerment of Persons with Multiple Disabilities
Chennai**

Details of Miscellaneous Expenditure under Schedule 21

Sl. No.	Particulars	2009-10	2010-11
1	Miscellaneous Expenditure	94316	85359
2	Legal Fees	6540	25430
3	Publication & Periodicals	27960	24950
4	Hospitality	20346	5994
5	Bank Charges	3765	4005
	Total Expenditure	152927	145738

**National Institute for Empowerment of Persons with Multiple Disabilities
Chennai**

Details of Miscellaneous Income under Schedule 18

Sl. No.	Particulars	2009-10	2010-11
1	Sale of Scrapes	126000	0
2	Sale of Old Newspapers	0	1263
3	Sale of Study Materials/ Tender Forms	8600	600
4	Hostel Maintenance Charges	22200	35900
5	Miscellaneous Receipts	7113	4057
6	Guest House Receipts	33675	4225
7	User Charges Receipts	12880	63412
	Total Income	210468	109457

**National Institute for Empowerment of Persons with Multiple Disabilities
Chennai**
Details of Advances paid to staff and outstanding advances as on 31-03-2011

Sl.No.	Name & Designation	Purpose	Amount	2010-11	Balance as on 31.03.11
	Shri/Smt				
1	M. Rajesh, Infor. & Media Off	Motor Cycle Adv.	15000	6000	9000
2	Devendra Prasad, R.O.	Motor Cycle Adv.	15000	6000	9000
3	I.G. Anusuya, R.O.	Motor Cycle Adv.	15000	6000	9000
4	K. Balabaskar, Lecturer	Motor Cycle Adv.	15000	6000	9000
5	Dhanavendan, Special Teach	Motor Cycle Adv.	15000	6000	9000
6	S.K. Sany, P.A. (Estate)	Motor Cycle Adv.	15000	6000	9000
7	Sunil Kumar, U., P.A. (S & P.)	Motor Cycle Adv.	15000	6000	9000
8	Rajesh Ramachandran, R.O.	Motor Cycle Adv.	19500	6000	13500
9	P.Angelin Golda, PA	Motor Cycle Adv.	19500	6000	13500
10	S.Venkateswaran, PA	Motor Cycle Adv.	20000	6000	14000
11	S.Gurumoorthy, R.O	Motor Cycle Adv.	19500	6000	13500
12	J.V.Subbaraman, R.O.	Motor Cycle Adv.	30000	4500	25500
13	M.Kathiravan, Spl. Teacher	Motor Cycle Adv.	22000	6000	16000
14	Stalin Arul Regan, Spl. Teach	Motor Cycle Adv.	22000	6000	16000
15	Sobhiya Vani, Spl. Teacher	Motor Cycle Adv.	22000	6000	16000
16	S. Krishnamurthy, Peon	Motor Cycle Adv.	12000	3600	8400
	Total		261500	92100	199400
17	A. Amarnath, Lecturer.	Computer Adv.	15000	6000	9000
18	Rajesh Ramachandran, R.O.	Computer Adv.	15000	6000	9000
19	K. Balabaskar, Lecturer	Computer Adv.	19500	6000	13500
20	Pragya Verma, R.O	Computer Adv.	19500	6000	13500
22	S.Venkateswaran, PA	Computer Adv.	20000	6000	14000
23	I.G. Anusuya, R.O.	Computer Adv.	19500	6000	13500
24	Sunil Kumar, U., P.A. (S & P.)	Computer Adv.	27500	6000	21500
25	Devendra Prasad, R.O.	Computer Adv.	28000	6000	22000
26	Gurumoorthy, R.O	Computer Adv.	28000	6000	22000
27	J.V. Subbaraman	Computer Adv.	28500	6000	22500
28	S.K. Sany, P.A. (Estate)	Computer Adv.	22000	6000	16000
29	P.Kamaraj, Lecturer	Computer Adv.	30000	24000	6000
30	B.S.Santhosh Kanna, Lecturer	Computer Adv.	30000	3000	27000
31	S.Karthikeyan, Lecturer.	Computer Adv.	30000	3000	27000
32	M.Kathiravan, Spl. Teacher	Computer Adv.	30000	4500	25500
33	D.Stalin Arul Regan, Spl. Teacher.	Computer Adv.	30000	4500	25500
34	J. Mohamed Ibrahim, P.A. (Accour	Computer Adv.	30000	2500	27500
	Total		422500	107500	315000
35	Smt. Sobhiya Vani, Special Teach	Festival Advance	3000	300	2700
36	S.Krishnamurthy, Peon	Festival Advance	3000	300	2700
	Total		6000	600	5400
	Grand Total				519800



ANNEXURE 1

General Council

As per Clause 9 of the Bye-laws of NIEPMD the General Council of this Institute was constituted vide Govt. of India, Ministry of Social Justice & Empowerment Order No.F.No.8-9/2006- NLI dated 3rd July 2007.

List of Members of General Council

1.	Shri.K.M.Acharya Secretary to GOI Ministry of Social Justice & Empowerment, Shastri Bhavan, New Delhi 110001.	President
2.	Ms.Poonam Natarajan, Chair Person, The National Trust, New Delhi.	Member
3.	Maj.Gen.Ian Cardozo Chairperson, Rehabilitation Council of India, New Delhi.	Member
4.	Dr.Arbind Prasad Joint Secretary to GOI, Ministry of Social Justice & Empowerment, Shastri Bhavan, New Delhi 110001.	Member
5.	Shri.A.N.Jha Joint Secretary & Financial Adviser, Ministry of Social Justice & Empowerment, Shastri Bhavan, New Delhi 110001.	Member
6.	Director General of Employment & Training, Ministry of Labor, Government of India, Shram Shakti Bhawan, Rafi Marg New Delhi -110001	Member
7.	Shri Amitabh Mehrotra, Gurudaya Niwas, 26,Sachivalaya Colony Lucknow (U.P).	Member
8.	Dr.S.S.Badrinath Sankara Netralaya, 18, College Road, Chennai (T.N.).	Member

9.	Shri A. Balraj, New No. 12 9 Old No.76) J-block, Anna Nagar, Chennai - 600 102.	Member
10.	Ms. Nandita Gurjar BPO Division, Infosys, Bangalore.	Member
11.	Shri N.Thomas Ngullie CATZW Lake View, Kher Mohal Dimapur, Nagaland.	Member
12.	Dr. Kalyana Krishnan Indian Institute of Technology I.I.T. Post office, Chennai (T.N.)	Member
13.	Dr. R. K. Srivastava Director General of Health Services Ministry of Health & Family Welfare, Government of India, New Delhi	Member
14.	Shri.S.S.Jawahar, Principal Secretary, Department of Social Welfare Government of Tamil Nadu	Member
15.	Shri.V.K.Subburaj, Principal Secretary & Director Medical Health Services Government of Tamil Nadu	Member
16.	Joint Secretary to G O I, Ministry of Education, Government of India, Shastri Bhawan, New Delhi – 115.	Member
17.	Prof . R.Rangasayee Director, AYJNIHH K.C.Marg, Bandra Reclamation, Bandra (West) Mumbai – 50.	Member
18.	Shri.T.C.Sivakumar, Director, NIMH Manovikas Nagar, Secunderabad – 500 009.	Member
19.	Ms.Anuradha Mohit Director, NIVH 116, Rajpur Road, Dehradun – 01.	Member
20.	Dr.Ratnesh Kumar, Director, NIOH B.T.Road, Bon-Hooghly, Kolkata - 90.	Member
21.	Dr.Neeradha Chandramohan, Director, NIEPMD Muttukadu, East Coast Road, Chennai 603112.	Member Secretary



ANNEXURE 2

Executive Council

As per Clause 12 of the Bye-laws of NIEPMD the Executive Council of the Institute was constituted vide Govt. of India, Ministry of Social Justice & Empowerment Order No.F.No.8-9/2006-NI.I dated 3rd July 2007.

List of Members of Executive Council

1.	Dr.Arbind Prasad Joint Secretary to GOI Ministry of Social Justice & Empowerment, Shastri Bhavan, New Delhi 110001.	Chairperson
2.	Shri.A.N.Jha Joint Secretary & Financial Adviser, Ministry of Social Justice & Empowerment, Shastri Bhavan, New Delhi 110001.	Member
3.	Shri.Jagdish Kumar, Dy.Secretary (Nis & DD- I) Ministry of Social Justice & Empowerment, Shastri Bhavan. New Delhi 110001.	Member
4	Shri C. Arun Kumar Chennai (Tamil Nadu).	Member
5	Dr. D. Nagaraja, Director, NIMHANS, Bangalore	Member
6	Dr.Neeradha Chandramohan, Director, National Institute for Empowerment of persons with multiple Disabilities, Muttukadu, ECR, Road, Chennai 603112.	Member Secretary

ANNEXURE 3

Academic Committee

The Academic Committee shall advise the Institute in the matters of Scientific Research and establishing Institutional, Non-Institutional programmes for the education and training of personnel in the field of Multiple Disabilities.

List of Members of Academic Committee

01	Dr. Ratna, Former Director.AIISH, Bangalore.	Chairperson
02	Dr.A.K.Mital, Former Regional Director,NIVH, Chennai.	Member
03	Prof. P.Jayachandran Director, Vijaya Human Services, Chennai	Member
04	Sr.(Dr.) Rita Mary, Guidance Home for the Adult Deaf Girls, Chennai	Member
05	Dr. Vijayalakshmi Myreddi Lecturer in Spl. Edn., NIMH, Secunderabad.	Member
06	Shri Akhil Paul, Director,Sense International, Ahmadabad.	Member
07	Dr. Karunanidhi Head of the Department(Psychology), University of Madras, Chennai.	Member
08	Prof. Rangaswami, Principal & Co-ordinator, Sweekar-Upkaar Rehabilitation Institute, Hyderabad.	Member
09	Prof. Roopa Nagaraja Head of the Department, Dept. of Speech & Hearing, Ramachandra Medical College, Chennai.	Member
10	Dr. Purushottam Freelance Psycholinguistics Bangalore	Member
11	Dr.Neeradha Chandramohan , Director, NIEPMD, Chennai.	Convener

ANNEXURE 4

A.Course Content of B.Ed.Special Education (Multiple Disabilities)

Theory papers

S.No	Name of Paper
01	Education in Emerging Indian Society
02	Psychology of Learning and Human Development
03	Educational Innovation and Management
04	Nature and needs of various disabilities
05	Introduction to Multiple Disabilities
06	Identification and assessment of Persons with Multiple Disabilities
07	Curriculum and teaching strategies
08	Optional I
09	Optional II

Practical

Group	Name of the practical
Group A	
01	Observational Record for Optional – I
02	Demonstration Record for Optional – I
03	Microteaching file for optional – I
04	Teaching practice Optional – I
05	Instructional Materials for Optional – I
06	Test and measurements file for Optional – I
Group B	
07	Observation record for Optional – II
08	Demonstration record for optional – II
09	Microteaching practice optional – II
10	Instructional materials for Optional – II
11	Instructional materials for Optional – II
12	Test and Measurement file for Optional – II
Group C	
13	Educational Technology file
14	Case study record
15	Action research record
16	Psychology experiments record
17	CT Camp file
18	Physical Education Record
19	Slow Record
20	Text Book Review Record pertaining to optional
Group D	
21	IEP
22	Group Teaching in inclusive setup
23	Group teaching in special school setup for children with multiple disabilities
24	Preparation and use of Emergency Literacy
25	Out reach programme activity records
26	IEP record
27	Project work

B.Course Content of Diploma Programs in Special Education

Theory Papers	DSE (CP)	DSE (DB)	DSE (ASD)
Paper I	Medical Aspects	Introduction to Deafblindness	Autism, Nature and Needs
Paper II	Child Development, Psychology & Rehabilitation	Assessment and Evaluation	Human Development & Psychology
Paper III	Assessment Physical & Functional Management	Communication	Curriculum & Teaching
Paper IV	Communication Hearing, Language & Speech	Instructional strategies & Interventions	Family & Community
Paper V	Education for Children with Cerebral Palsy	Deafblindness – Perspectives & Practices	Therapeutics
Practicum			
Practicum I	Assessment, Physical and Functional Management	Assessment & Evaluation	Individualized Program Plan
Practicum II	Communication, Hearing, Language & Speech	Orientation & Mobility	Group Teaching
Practicum III	Education for Children with Cerebral Palsy	Communication	Therapeutics - A
Practicum IV	Project	Preparation of teaching aids	Therapeutics - B
Practicum V	Assignment	Teaching practice	-
Practicum VI	-	Case Study	-
Practicum VII	-	Project work	-
Practicum VIII	-	Use of Special aids and appliances	-

C. Objectives of the Course:

I. B.Ed.Special Education (Multiple Disabilities):

- To train the students to identify, assess and diagnose persons with multiple disabilities.
- To teach, train and manage children with multiple disabilities in all areas of management.
- To critically review & evaluate progress.
- To assess program plan, implement and evaluate through individual and group settings.

II. Diploma in Special Education (Cerebral Palsy):

- To demonstrate a thorough knowledge of psychological aspects of disability.
- To demonstrate thorough knowledge of medical aspects: Basic Anatomy, Physiology & Pathology in general and the nervous & musculoskeletal system in particular.
- To differentiate between Typical and Atypical patterns of motor, cognitive speech, language & communication development in children.
- Able to carry out specific physical, functional, speech and language therapies.
- Program for children with multiple disabilities under the guidance of physical, occupational, speech and language therapists.
- To plan and implement instructional programs.
- To prepare special education programs in various settings using appropriate low-cost technology.
- To make and use aids for classroom instruction.
- To develop requisite skills to work in IBR and CBR settings.

III. Diploma in Special Education (Deafblind):

- To train the students to understand the implications of deafblindness on the development of a child and also to make them capable of teaching persons with deafblindness, the skills needed for independent living after a thorough assessment.
- To train the students to develop a need based curriculum and activities in various settings for the persons with deafblindness.
- To train the students in all curriculum needs that are essential for person with Deafblindness including vocational skills.

IV. Diploma in Special Education (Autism Spectrum Disorder):

- To train the students to assess and develop curriculum for persons with Autism Spectrum Disorders.
- To train the students to learn classroom management & record maintenance.
- To train the students to apply principles of psychology for behavior management of persons with Autism Spectrum Disorders.
- To empower the students to use other special therapies for persons with Autism Spectrum Disorders

D. List of Successful Candidates with their Placement status for the year 2010-11

B.Ed.Spl.Education (Multiple Disabilities)

S.No	Name of the student	Category	State	Placement Details
01	ANITHA.B D/o. N.Balu, Pallankoil kottagam, Kadiyachery (Post), Thiruthurai Poondi(Tk), Thiruvarur(Dt) - 614715. Ph:9524936732	SC	Tamil Nadu	IEDSS, Thiruvarur
02	GLORY ANNIE W/o Mr.G.D.Prince, No.38, Pandian Nagar, III Street, Pandian Nagar, Vettuvankeni, Chennai 600 041. Ph:9840068889	BC	Tamil Nadu	Higher studies
03	ILAYARANI.P D/o. R Packirisamy, Abishekakattalai - (ST), Thiruthurai, Tiruvarur (Dt), TamilNadu - 614713. Ph:9843640729	SC	Tamil Nadu	IEDSS, Thiruvarur
04	IRUDAYA RANLD D/o.R Dhandapani, No.320, G Block, V.O.C Nagar, Thondiarpit, Chennai - 600081. Ph:9791104871	BC	Tamil Nadu	Higher studies
05	LAVANYAL.M.P D/o Mr.S.N.Mahalingam, 10/851, New Colony, Angalakkuruchi, Pollachi Taluk, Coimbatore 648 007. Ph:9442027873	MBC	Tamil Nadu	Guest Faculty, NIEPMD
06	MALATHLE D/o. S Elumalai, No.1/1016 A, Nehru Street, Gandhi Nagar, Redhills, Chennai - 600052. Ph:9952070819	MBC	Tamil Nadu	SSA, Thirvallur
07	PADMAVATHY.V D/o. A Viswanathan, No.16, Dr.Muniappa Road, Kilpauk, Chennai - 600010. Ph:9444758357	MBC	Tamil Nadu	NGO, Chennai
08	PRISKILAL D/o.K.Rajasekar, No.63, Subramaniya Bharathiar Street, Redhills, Chennai 600 052. Ph:7200499534	SC	Tamil Nadu	SSA, Thirvallur
09	RAGINI.N D/o Mr.P.Nagappan, No.5 -36/5-21, Pettukutty Street, Pushpavanam (PO), Vedaraniyam (Tk) 614 809. Ph:9003036067	SC & PH	Tamil Nadu	Higher studies
10	RAMALINGAM.M S/o Mr.Mari, Door No:379A, RPF Office, Opp side Railway Colony 02, Erode 638 002. Ph:9965167256	ST	Tamil Nadu	SSA, Erode
11	RATHIGA W/o Mr.Balaji, No.4/44, Nayar Varadhapillai Street, Royapettah, Chennai 600 014. Ph: 9994471072	SC	Tamil Nadu	NGO, Chennai

D.Ed.Spl.Education (Cerebral Palsy)

12	REVATHI.B W/o Mr.Pannerselvam, Old No:19/9, New No.9/22, Muthumariamman Koil Street, Kundrukadu, Kovalam (PO) 603 112 Ph:9444248297	SC	Tamil Nadu	Yet to complete the course
13	S.SRI GOWRI W/o Mr.Rajesh Ramachandran, 1/77, Annai Therasa Street, Near St.Lourdes Church, Muttukadu, Chennai 603 112. Ph:9445129768	Gen	Andhra Pradesh	Guest Faculty, NIEPMD
14	SEETHALAKSHMI.C D/o Mr.G.Chinnappillai, No.1/63, Gandhi Nagar, Thirumanur (Post), Ariyalur (TK & Dt) 621 715. Ph: 9789329047	SC	Tamil Nadu	Guest Faculty, NIEPMD
15	SHAIK GULZAR C/o Mr.S.Kather Masthan, 32, VI Lane, Sastri Nagar, Adyar, Chennai 600 020. Ph:9884969740	BC & PH	Tamil Nadu	Yet to complete the course
16	SIVA.P S/o Mr.R.Poongavanam, No.28/49D, Valatheeswaran Koil Thottam Street, Kanchipuram 631 501. Ph:9791545232	BC	Tamil Nadu	NGO, Pudhucherry
17	YUGANDHARANAYUDU.R S/o Mr.Thippaiah Rasineni, Venkatadripalli Village, Seerpi (Po) Beluguppa Mandal, Anantapur Dist., Andhra Pradesh 515 741. Ph:9000006313	Gen	Andhra Pradesh	SSA, Anantapur. (A.P)

* Reservation: SC-36%(6), ST-5%(1),BC-18%(3), MBC/DNC - 17%(03),
PH - 12%(2), Gen - 12%(2)

** Male - 03, Female - 14

*** No.of students appeared in Examination - 17, % of Pass - 88%

First Rank Holder 2010-11



Smt.S.Sri Gowri
B.Ed.Spl.Edn (MD)

S.No	Name of the student	Category	State	Placement Details
01	AFROZ ALAM s/o Mr.Md.Akhtar, Village Chaknoor, Post Rahmatpur, Dist Samastipur, Bihar 848 101.	Gen	Bihar	Guest Faculty, NIEPMD
02	ANITHA.K D/o Mr.M.Kaliyaperumal, Old No.28B, New No.27, 2nd New Street, Mayiladuthurai 609 001.	MBC	Tamil Nadu	NGO
03	ANNARASU.K S/o Mr.Kuzhanthai Yesu, 5A, M.G.Nagar -IV, Thirumurugan Nagar, Adanoor, Guduvancherry 603 202.	BC	Tamil Nadu	SSA, Marakkanam
04	ASHA BI PATAN D/o Mr.P.Jaffer Khan, No.6 -533, Azad Nagar, Ananthapur 515 001.	Gen	Andhra Pradesh	SSA, Anantapur
05	ASHWINI.K.M D/o Mr.K.Murali, 3/91, Big Street, Maddur P.O., Tiruttani Taluk, Thiruvallur 631 206.	BC	Tamil Nadu	SSA, Tiruvallur
06	CHANDIRAN.I S/o Mr.Iruchappan, 57, Palla Street, Periyakalpet, Puducherry 605 014.	MBC	Puducherry	NGO, Pudhucherry
07	EZHILLARASI.K D/o Mr.S.Krishnamoorthy, 133, Moovendar Nagar, Nadhvakari, Anna Nagar, Chennai 600 040.	SC	Tamil Nadu	Yet to complete the course
08	GEETHA.M C/o Sr.Rose Mary, Immaculate Joy Home, No.1, 6th Cross, Rajaganapathy Nagar, Kakayanthope, Puducherry.	BC	Puducherry	NGO, Pudhucherry
09	GOMATHI.R W/o Mr.R.Kulasekaran, No.2, B - Block, Police Quarters, Otteri, Pattalam, Chennai 600 012.	SC	Tamil Nadu	discontinued
10	JAYAWARTHANAN.K S/o Mr.M.Kowran, Dr.Annal Nagar, Morappur PO, Harar (Taluk), Dharmapuri Dist 635 305.	SC	Tamil Nadu	SSA, Dharmapuri
11	MALAPOTHANNAGARI MAMATHA D/o Mr.M.Pathanna, Kannepalli Village, Brahmasamudram Mandal, Anantapur 515 763.	SC	Andhra Pradesh	RDT, Anantapur
12	MALLIKARJUNA CHIMPIRI s/o Mr.C.Lakshmana, 1-110, Obulapuram Village & PO, Bathalapathi Mandal, Ananthapur 515 672	SC	Andhra Pradesh	RDT, Anantapur
13	PANEERSELVAM.P s/o Mr.Palanisamy, 69, Kalaivanar Street, Solai Nagar, Muthaialpet Post, Puducherry 605 003.	BC	Puducherry	Yet to complete the course

D.Ed.Spl.Education (Deafblind)

14	PARVATHI.P D/o Mr.K.Panneerselvam, Middle Street, Periya Singalandhi, Thiruthuraipundi PO & TK., Tiruvurur Dist 614 713.	SC	Tamil Nadu	SSA, Tirvarur
15	PRASANNAKUMARAN.N s/o Mr.M.Nagarajan, 5-29-4, EB Colony, North Side, Palayampatti, Aruppukottai 626 101.	BC	Tamil Nadu	SSA, Sivakasi
16	PREMA.S D/o Mr.T.Subramaniam, 63, Middle Street, Solainagar, Muthialpet, Pudhucherry - 3.	BC	Puducherry	NGO, Pudhucherry
17	PUNITHA.M D/o Mr.Mariyappan, Anna Street, Adhiyaman Kottai (PO), Dharmapuri Dist. 636 807.	MBC	Tamil Nadu	SSA, Karamangalam
18	RANEMMA.C D/o Mr.Gangappa, Malameedapalli (PO), Gandlappanta Mandal, Anantapur Dist 515 521.	BC + PH	Andhra Pradesh	RDT, Anantapur,
19	SATHIYA DEVI.D D/o Mr.Dasarathan, c/o RISE Trust, 10/525/2, Phase III, Nethaji Bose Road (Extn) Sathuvachari, Vellore 632 009.	MBC + PH	Tamil Nadu	NGO, Vellore
20	SURIYA.T D/o Mr.Thiruvengadam, 3/112, Meenakshi Avenue, Sathankuppam, Kelambakkam, Chennai – 603 103	BC	Tamil Nadu	Guest Faculty, NIEPMD
21	SUSEELA.B D/o Mr.B.Gangappa, Mamaduru Village & PO, Brahma Samudram Mandal, Ananthapur 515 767.	SC	Andhra Pradesh	RDT, Anantapur,
22	THATCHINAMURTHY.S S/o Mr.Seenivasan, Sithathur, Kurupeedapuram PO, Kallakurichi Taluk, Villupuram Dist.	BC	Tamil Nadu	SSA, Villupuram
23	UDHAYAKARTHIKA.K D/o Mr.P.Kani, 166, A4, MGR Colony, East Pandavarmangalam PO, Kovilpatti Taluk, Tuticorin District	SC	Tamil Nadu	Yet to complete the course
24	UMADEVI.T D/o Mr.Thanikachalam, Old Bhuvanagiri Road, Childambaram 608 001.	SC	Tamil Nadu	NGO, Chidambaram,

* Reservation:- SC-38%(9),OBC-46%(11), PH - 8%(2), Unreserved - 8%(2)

** Male - 08, Female - 16

*** No.of students appeared in Examination - 24, % of Pass - 92%

S.No	Name of the student	Category	State	Placement Details
01	ANAND.S s/o Mr.K.Sekar, 64/5, Iyyappan Illam, High School Road, Sethiyathope,	MBC	Tamil Nadu	SSA, Parangipet
02	ATHILAKSHMI.S D/o Mr.Sadaiyandi, Vanniyar Street, Jambothi Village, Jayankondan (PO) Gingee Taluk, Villupuram Dist. 604 202.	MBC	Tamil Nadu	SSA, Chennai
03	BHAT NILESH SURAJLAL s/o Mr.Chandramani V Dhote, F.No.F/2/B, Borkute Nagar, Yeshwant Apartment, Nagpur 440 015	PH	Maharashtra	NGO, Nagpur
04	CHIRANJEEVI PITTU s/o Mr.P.Appa Swamy, Door No:3-81, Bathalapalli (M), Ananthapur 515 661.	Gen	Andhra Pradesh	RDT, Anantapur
05	EMALDA RANI.D D/o Mr.Dhairaviyam, 2/26, Matha Kovil Street, Sooriyor (PO) Kumpakuti, Trichy 620 025.	BC	Tamil Nadu	SSA, Annavasal
06	KAVITHA.M D/o Mr.M.Mayil Samy, R.Kollappatti, Ramagiri (PO), Velasandur Tk., Dindugal 624 703.	BC	Tamil Nadu	SSA, Okanegal
07	MAHADEVAN.S s/o Mr.M.Seetharaman, New No.8(Old no:34), Arimuthuachari Street, Triplicane, Chennai 600 005.	PH	Tamil Nadu	NIEPMD
08	MAHALAKSHMI.M D/o Mr.D.Muruganandam, 1/14, Pajanai Koil Street, Injambakkam, Chennai 600 041.	PH	Tamil Nadu	NGO, Chennai
09	MAHALAKSHMI.S D/o Mr.D.Sivasankaran, No.365 B, Railway Quarters, Winterpet, Arakonam 631 001.	SC	Tamil Nadu	SSA, Poondi,
10	MEHAR DAMODAR MAHADEO s/o Mr.Mahadev, AT Chikhlee, PO Dongri BK., TK Thumasar, Dist Bandara, Maharashtra.	PH	Maharashtra	Govt.school for blind, Maharashtra.
11	PRABAVATHI.N D/o Mr.E.Natarajan, No.431, F Railway Quarters, Winterpet, Arakonam, Vellore 631 002.	SC	Tamil Nadu	SSA, Poondi,
12	RAMANNAGARI NAGENDRA s/o Mr.R.Obilesu, near Narasimha Swamy Temple, SC Colony, Chennethapalli (Vill) & (PO) Ananthapur 515 101.	SC	Andhra Pradesh	RDT, Anantapur
13	RAMESHWARIE.G D/o Mr.K.Ganapathy, 43, Annumarkovil Street, Papanasam, Thanjavur 614 205.	BC	Tamil Nadu	SSA, Peeravoorani

D.Ed.Spl.Education (ASD)

14	RENUGA.M D/o Mr.P.Murugan, 1/2, CSI School Street, Perumuchi (PO) Arakkonam, Vellore 631 002.	SC	Tamil Nadu	Discontinue
15	RINA RAV D/o Mr.Ramkawal Prasad, Purani Thasi I, Dr.Jahir Ahamad, Kessamme Khalilabad, Sant Kabir Nagar, Uttar Pradesh 272 175.	SC	Uttar Pradesh	Rehab day care centre, U.P
16	SARASWATI NAYAK D/o Mr.Sarat Chandra Nayak, V.V. Accommodation, House No.122, 2104, Thanthondriamman Koil Street, Uthandi, Chennai 600 119.	Gen	Tamil Nadu	Rehab day care centre, U.P
17	SEEMA RAO D/o Mr.Ramkawal Prasad, Purani Thasi I, Dr.Jahir Ahamad, Kessamme Khalilabad, Sant Kabir Nagar, Uttar Pradesh 272 175.	SC	Uttar Pradesh	Rehab day care centre, U.P
18	SENTHIL.N s/o Mr.M.Narasimhan, 1/310, Dr.Ramadoss Street, Medavakkam, Chennai 600 100.	MBC	Tamil Nadu	Higher studies
19	SREENIVASAN.S.V s/o. Mr.S.K.Varadan, 28, EST Nagar, II Street, Padaturpet, Pallipet Taluk, Thiruvallur Dist. 631208.	BC	Tamil Nadu	SSA, Pallipet
20	SRIPRIYA.P s/o Mr.Perumal, 3/202, Behind Police Station, Rishivandiyam (PO) Sankarapuram (TK), Villupuram Dist 606 205.	BC	Tamil Nadu	SSA, Kallakurichi
21	SUKUMAR.M.V s/o. Mr.M.A.Veluswamy, No.7, Chellaperumal Koil Street, Sholinghur, Vellore Dist. 631 102.	BC	Tamil Nadu	SSA, Pallipet
22	SUMATHI.G s/o Mr.Ganasan.R, 3/202, Behind Police Station, Rishivandiyam (PO) Sankarapuram (TK), Villupuram Dist 606 205.	MBC	Tamil Nadu	SSA, Thirunavalur
23	TAMANNA PARWIN D/o Mr.Saikh Tamiruddin, 1/163, Hajir Street, Muttukadu, ECR., Kovalam	BC	Tamil Nadu	NGO, Chennai.
24	VELMURUGAN.P S/o Mr.P.Periyasamy, Karikkali, Guziliamparai (PO) Vendasandur Taluk, Dindigul Dist., 624 703	SC	Tamil Nadu	SSA, Karur
25	VINNARASLA d/o Mr.P.Anthony, No.88, 4th Cross Street, Nadeshwarcoil Colony, Guduvanchery, Chennai 603 202.	BC + PH	Tamil Nadu	SSA, Chennai

* Reservation: OBC- 44%(11), SC- 28%(7), PH- 20%(5), unreserved - 8%(2)

** Male - 10, Female - 15

*** No.of students appeared in Examination - 24% of Pass - 100%

S.No	Name of the student	Category	State	Placement Details
01	AGIL KUMAR.V S/o Mr.S.Venkatesan, 1/26, MGR Nagar, Maddur 631 206, Tiruttani, Thiruvallur District.	MBC	Tamil Nadu	SSA, Tiruvallur
02	AKILA.A D/o Mr.P.Ana ndhan, 1/147, Kovil Street, Melathangal Village & PO, Vandavasi, Thiruvannamalai Dist.	SC	Tamil Nadu	NGO, Chennai
03	ARCHANADEVIA W/o Mr.S.Suresh, 648, TNHB Colony, Vennampatty Road, Collectrate (PO), Dharmapuri 636 705.	SC	Tamil Nadu	Home bound training
04	BHARATHI.A W/o.Mr.Kuppusamy.M Chinakampathi, Velavaipudher PO, Dharapuram TK, Tirpur Dist.	sc	Tamil Nadu	Home bound training
05	DHANALAKSHMIA D/o Mr.K.Arumugam, 67, Kannathasan Street, Solinagar, Muthialpet, Pondicherry 605 003.	MBC	Puducherry	SSA, Puducherry
06	GAJBHIYE ANUPKUMAR RAMESH S/o.Mr. Gajbhiye, Plot no.986,Buddha Nagar, Near Hanuman Temple, Nagpur-17	SC	Maharashtra	Higher studies
07	LANJEWAR VIPUL RAMDAS S/o.Shri.Ramdas, In front of Zilla Parishad School, Weltur, Kuhl PO., Nagpur District.	OBC	Maharashtra	Higher studies
08	MARIYA.C D/o. Mr.Chinnathambi, 36, Gengai Amman Koil Street, Muttukadu, Kovalam PO, Kancheepuram - 603 112.	BC	Tamil Nadu	Higher studies
09	MENAKA.M D/o Mr.K.Murugan, 1/37T, Kovil Street, Melathangal (PO), Vandavasi, Thiruvannamalai Dist.	SC	Tamil Nadu	NGO, Villupuram
10	MUNIYAPPAN.P S/o.Mr.C.Palani, Earikdipatti Village, Laligam (Po), Dharmapur Dist - 636 703	MBC + PH	Tamil Nadu	NGO, Dharmapuri
11	MUTHULAKSHMLM D/o.Mr.Mariyappan, Punganai Villag e, Mannadipatti (PO), Uthangarai(TK), Krishnagiri (Dist) - 635 207	SC	Tamil Nadu	SSA, Dharmapuri
12	RAJMOHAN.K S/o Mr.Kumar Raj, Kondagarahalli Via, Thippiredihalli PO, Bommiidi via, Dharmapuri Dist - 635 301.	SC	Tamil Nadu	SSA, Dharmapuri
13	RAMTEKE ASHISH WASUDEO S/o.Mr.Wasudeo AT -Post Manegaon Bazaar Tah Dist Bhandara, Maharashtra - 441 904	SC	Maharashtra	Higher studies

Details of various Scholarships received by the students during the academic year 2010-11

Diploma in Special Education (ASD)

14	RAMTEKE SHEETAL WASUDEO S/o.Mr.Wasudeo AT -Post Manegaon Bazaar Tah Dist Bhandara, Maharashtra - 441 904	SC	Maharashtra	Home bound training
15	SATHYA.N D/o Mr.K.Narayanan, Chinnakampatti Village, Adhagapadi PO., Dharmapuri Dist. 636 803.	MBC	Tamil Nadu	SSA, Dharmapuri
16	SUGANYA.S D/o Mr.Subramanian, Alamankurichi, Eragam PO., Kumbakonam Taluk, Tanjore Dist.	BC	Tamil Nadu	SSA, Kumbakonam
17	SUNDAR.M S/o Mr.P.Subramani, 9/11, Mari Amman Koil Street, Kundrukkadu, Kovalam (PO), Kancheepuram Dist - 603 112.	SC	Tamil Nadu	NGO, Palavakkam
18	THAMIZHSELVIN D/O Mr.Nakendran, 1/135, School Street, Muttukadu, Kancheepuram Dist - 603 112.	SC	Tamil Nadu	NGO, Mylapore
19	THANGABOOPATHY.C W/o. Mr.Indirajith, Mariamman Koil Street, Sundararaja puram Village, Rajapalayam PO, Virudunagar District.	SC	Tamil Nadu	Home bound training
20	VALLIM W/o Mr.K.Chezhiyan, Iyyanar Kovil Street, Kalaistheenapuram, Mudikandanallur PO., Trangampandi TK., Nagai Dist - 609 309	MBC	Tamil Nadu	SSA, Mayiladuthurai.

* Reservation: SC – 60%(12), OBC – 35%(07), PH – 5 %(1)

** Male – 07, Female – 13

*** No.of students appeared in Examination – 20, % of Pass – 100%

S.No.	Name of the Student	Reg. No (IGNOU)	Scholarship Details
1	Muniyappan.P	105354890	PH Scholarship NHFDC, Govt of India Rs. 15,600.00/-
2	Ramteke Ashish Wasudeo	105354893	SC Scholarship from Spl.District Social Welfare Officer, Bhandra Rs. 11,065.00/-
3	Ramteke Sheetal Wasudeo	105354894	SC Scholarship from Spl.District Social Welfare Officer, Bhandra Rs. 11,065.00/-
4	Gajbhiye Anupkumar Ramesh	105354886	SC Scholarship from Spl.District Social Welfare Officer, Nagpur Rs. 16,010.00/-
5	Lanjewar Vipul Ramdas	105354887	OBC Scholarship from Spl.District Social Welfare Officer, Nagpur Rs.12,200.00/-
6	A.Akila	105354882	Awaiting from Dept of Adi Dravidar, Govt of Tamil Nadu
7	A.Archana Devi	105354883	Awaiting from Dept of Adi Dravidar, Govt of Tamil Nadu
8	A.Bharathi	105354884	Awaiting from Dept of Adi Dravidar, Govt of Tamil Nadu
9	C.Mariya	105354888	Awaiting from Dept of Adi Dravidar, Govt of Tamil Nadu
10	M.Menaka	105354889	Awaiting from Dept of Adi Dravidar, Govt of Tamil Nadu
11	M.Muthulakshmi	105354891	Awaiting from Dept of Adi Dravidar, Govt of Tamil Nadu
12	K.Rajmohan	105354892	Awaiting from Dept of Adi Dravidar, Govt of Tamil Nadu
13	Sundar.M	105354897	Awaiting from Dept of Adi Dravidar, Govt of Tamil Nadu
14	N.Thamizhselvi.R	105354898	Awaiting from Dept of Adi Dravidar, Govt of Tamil Nadu
15	C.Thangaboopathy	105354899	Awaiting from Dept of Adi Dravidar, Govt of Tamil Nadu

Diploma in Special Education (CP)

S.No.	Name of the Student	Reg. No (IGNOU)	Scholarship Details
1	Ranemma.C	105354941	PH Scholarship NHFDC, Govt of India Rs. 16,600/-
2	Sathiya Devi.D	105354942	PH Scholarship NHFDC, Govt of India Rs.16,600/-
3	K.Ezhilarasi	105354931	Awaiting from Dept of Adi Dravidar, Govt of Tamil Nadu
4	M.Geetha	105354932	Awaiting from Dept of Adi Dravidar, Govt of Tamil Nadu
5	K.Jayawarthanam.	105354933	Awaiting from Dept of Adi Dravidar, Govt of Tamil Nadu
6	P.Parvathi	105354937	Awaiting from Dept of Adi Dravidar, Govt of Tamil Nadu
7	K.Udhyakarhika	105354946	Awaiting from Dept of Adi Dravidar, Govt of Tamil Nadu
8	T.Umadevi	105354947	Awaiting from Dept of Adi Dravidar, Govt of Tamil Nadu

Diploma in Special Education (Db)

S.No.	Name of the Student	Reg. No (IGNOU)	Scholarship Details
1	Vinnarasi.A	105354919	PH Scholarship NHFDC, Govt of India Rs. 12,600/-
2	Mahalakshmi.M	105354907	PH Scholarship NHFDC, Govt of India Rs.12,600/-
3	T.Emalda Rani	105354904	Awaiting from Dept of Adi Dravidar, Govt of Tamil Nadu
4	S.Mahalakshmi	105354906	Awaiting from Dept of Adi Dravidar, Govt of Tamil Nadu
5	N.Prabavathi	105354909	Awaiting from Dept of Adi Dravidar, Govt of Tamil Nadu
6	P.Velmurugan	105354918	Awaiting from Dept of Adi Dravidar, Govt of Tamil Nadu

Bachelors in Education (Multiple Disabilities)

S.No.	Name of the Student	Reg. No (TNTEU)	Scholarship Details
1	P.Ilayarani	1022610BD003	Awaiting from Dept of Adi Dravidar, Govt of Tamil Nadu
2	D.Irudaya Rani	1022610BD004	Awaiting from Dept of Adi Dravidar, Govt of Tamil Nadu
3	R.Priskilal	1022610BD008	Awaiting from Dept of Adi Dravidar, Govt of Tamil Nadu
4	N.Ragini	1022610BD009	Awaiting from Dept of Adi Dravidar, Govt of Tamil Nadu
5	M.Rathiga	1022610BD011	Awaiting from Dept of Adi Dravidar, Govt of Tamil Nadu
6	B.Revathi	1022610BD012	Awaiting from Dept of Adi Dravidar, Govt of Tamil Nadu

ANNEXURE 5

A. Short Term Training Program:

S.No	Name of the Program	Date	Participants
01	Training program for Community Development facilitators of VKP, Trichy	11/04/10	27
02	Deafblindness awareness & intervention for trainees of Higher secondary teacher training for HI, Little Flower Convent	22/04/10	46
03	Improving Verbal Communication skills among Children with Multiple Disabilities Pudhucherry	20/04/10 - 22/04/10	21
04	Developing/Improving verbal communication skills in children	10/05/10	22
05	Approaches for Assessment of Children with Multiple Disabilities, NAB, Trivandrum	10/05/10 - 14/05/10	31
06	Curriculum & instruction for children with Deaf blindness, Ananthpur,(A.P).	31/05/10 - 04/06/10	30
07	Enhancing Skills to Teach Braille	28/06/10 - 12/07/10	17
08	Curriculum & instruction for children with Deaf blindness, Ananthpur,(A.P).	31/06/10 - 04/07/10	30
09	Research in Rehabilitation	12/07/10 - 14/07/10	25
10	Management of Persons with Multiple Disabilities - Professionals (Orissa)	19/07/10 - 23/07/10	32
11	Community based rehabilitation for Vazhntukuvom project Volunteers	20/09/10 - 24/09/10	29
12	Community Based Rehabilitation programme, Mettupalayam	04/10/10 - 08/10/10	32
13	Community Based Rehabilitation programme, Thiruvarur	18/10/10 - 22/10/10	25
14	Effective Implementation of UNCRPD for District Disability Welfare officers of Tamil Nadu	22/10/10 - 23/10/10	37
15	Community Based Rehabilitation programme, Tirunelveli	25/10/10 - 29/10/10	34
16	Sensitization on various aspects of Multiple Disabilities to the Rehabilitation Professionals, CRC, Bhopal	25/10/10 - 26/10/10	44
17	Workshop for Specialists on Disability Evaluation & certification – Amendment Guidelines 2009 & Clarification for Doctors of DEBs of Gujarat	30/10/10	177

18	Identification and Assessment to children with special needs in inclusive Education setup at Sri Chandrasekarendra Saraswathi Viswa Maha Vidhyalaya Enathur, Kancheepuram	02/11/10	100
19	Community Based Rehabilitation programme, Tirunelveli	15/11/10 - 19/11/10	40
20	Introduction to Functional In dependency of adolescence and adult disabled persons Understanding skill development and vocational Training for disabled person in rural areas(group Activity VKP) at NIEPMD	17/11/10	40
21	Advance Technology for Deafblind	27/12/10 - 31/12/10	24
22	Overview on Multiple Disabilities	20/01/11	25
23	Community Based Rehabilitation for Vazhndu Kattuvom Project Supervisors	24/01/11 - 28/01/11	44
24	Professional Training program, Amalapuram, Andhra.Pradesh)	20/01/11	30
25	Recent trends in the field of Physiotherapy for children having Cerebral Palsy with additional Disabilities, Karur	21/02/11 - 25/02/11	21
26	Inclusive Education, Pondicherry	21/02/11 - 25/02/11	44
27	Disability Certification for Medical Doctors, Shillong, Meghalaya.	16/02/11	107
28	UNCRPD workshop for representatives of NGOs, professionals, Shillong, Meghalaya.	17/02/11	109
29	Concepts & strategies of Early Intervention in Multiple Disabilities, Theni	07/03/11 - 11/03/11	43
30	Curriculum instruction for Children with ASD, Nagercoil	28/02/11 - 04/03/11	51
31	Amendment of PWD Act	09/03/11 - 10/03/11	428
Total			1765

B. Orientation & Awareness Programs:

S.No	Name of the Program	Date	Participants
01	Orientation program on Multiple Disabilities for students of Dip.Teaching MR, Bala Vihar Training School, Kilpauk	07/05/10	16
02	Orientation program on Multiple Disabilities for CDF-VKP trainees of IEPC	07/05/10	27
03	Awareness of Multiple Disabilities and Deafblindness	18/05/10	60
04	Govt Schemes and Programs, Villupuram.	23/06/10	40
05	Orientation programme on Multiple Disabilities (D.Ed.Spl.Edn(MR), Balavihar Training School for SplEdu.Kilpauk	06/08/10	20
06	Orientation program on Multiple Disabilities (Sneha Special School for Mental Retardation, Neyveli	09/08/10	97
07	Orientation Program on Multiple Disabilities(Panchayat level Representatives, Thiyagadurgam	10/08/10	50
08	Orientation Program on Multiple Disabilities, Trainees of Life Help Centre for Handicapped	17/08/10	36
09	Orientation Program on Multiple Disabilities(Social Works Students, Mohammed Satak College, Chennai)	18/08/10	17
10	Orientation Program on Multiple Disabilities(Social Work Students,Hindustan College)	24/08/10	26
11	Awareness Program on Prevention and Early detection of Disability to anganvadi workers, Pudhucherry	30/08/10	137
12	Orientation program on Multiple Disabilities, Virudhachalam	20/10/10 - 22/10/10	64
13	Orientation program on Multiple Disabilities to the students of Diploma in HH, AYJNIHH.	04/10/10	29
14	Orientation program on Multiple Disabilities to the students of B.Sc (Psychology), Presidency College, Chennai	13/10/10	32
15	Orientation program on Multiple Disabilities to the students of MRT, Udayam Rehabilitation Centre, Kancheepuram	19/10/10	53
16	Orientation program on Multiple Disabilities to the students of D.Ed.Spl.Edu(Vocational Rehabilitation), RIMRS Institute for the Mentally Handicapped, Chittor	26/10/10	09
17	Orientation program on Multiple Disabilities to the students of D.Ed (Vocational Rehabilitation) Centre, NIMH, Mumbai	29/10/10	29
18	Orientation program on Multiple Disabilities for CDFs-VKP, Puducherry	18/11/10	29
19	Orientation program on Multiple Disabilities for staff of Sri Ramachandra University	23/11/10	22

20	Orientation program on Inclusion for preprimary teachers at Pondicheery	22/01/11	87
21	Orientation program on Multiple Disabilities for DECSE(MR) trainees of Vijay Human Services	04/02/11	24
22	Orientation on Multiple Disabilities, Govt. Hr.Sec.Schools students of Nemeli, Vettuvankeni, R.A. Puram, Kovalam	07/02/11	232
23	Orientation program on Multiple Disabilities for VKP-CDF trainees, Pudhucherry	08/02/11	15
24	Orientation program on Multiple Disabilities for D.Ed.SE(MR) trainees, Savli Training Division, (Pune)	11/02/11	42
25	Orientation on Multiple Disabilities, students of Sudhananda Vidyalaya, Chennai	14/02/11	40
26	Orientation program on Multiple Disabilities for D.Ed.SE(MR) trainees, Uma Educational & Technical Society, Kakkinada, (A.P)	17/02/11	25
27	Orientation program on Multiple Disabilities for B.Ed.SE(MR) trainees, SBT College of Special Education	23/02/11	39
28	Orientation on Multiple Disabilities for the Sarpanch Panchayat level worker (Nerkundram)	19/02/11	29
29	Orientation programme on Multiple Disabilities for SHGs, Disabled People Group, Navalur, Kancheepuram	26/02/11	15
30	Orientation program on Multiple Disabilities for students of DSE(HI), TCTD, Lucknow	08/03/11	24
31	Orientation program on Multiple Disabilities, for students of DPO, Schiefflin Institute of Health Research & Laprosy centre, Karigiri, Vellore.	13/03/11	05
32	Orientation on Multiple Disabilities, Kirapakkam	19/03/11	19
33	Awareness program on Disability Management, Maraimalai Nagar	28/03/11	40
34	Orientation program on Multiple Disabilities for students of DSE (Db) The Clarke school for deaf and Mentally Retarded, Chennai.	23/03/11	22
35	Orientation on Multiple Disabilities UAS, Dharwad.	31/03/11	92
Total			1543



ANNEXURE 6

C. Parental Training Program:

S.No	Name of the Program	Date	Participants
01	Early Intervention for Developmental Delay	19/04/10	130
02	Income Generation programme for parents of Persons with Multiple Disabilities	Aug 10	10
03	Role of Parents in Special Education	10/05/10	40
04	Income Generation programme for parents of Persons with Multiple Disabilities	July 10	13
05	Parent training programme for Management of Persons with Multiple Disabilities	22/07/10	34
07	Income Generation program for parents of Persons with Multiple Disabilities	August 10	16
08	Income Generation program for parents of Persons with Multiple Disabilities	October 10	10
09	Training program on Multiple Disabilities to the parents of persons with Multiple Disabilities	30/10/10	48
10	Various aspects on Multiple Disabilities to parents of persons with Multiple Disabilities	26/10/10	33
11	Income Generation program for parents at NIEPMD	Nov 10	20
12	Parents orientation programme for beneficiaries undergone training in Income Generation Programme At DAIL NIEPMD	02/11/10	15
13	Tailoring & Embroidery Unit-Parents Meeting	15/12/10	11
14	Income Generation programme for parents of Persons with Multiple Disabilities	January 11	14
15	Tailoring & Embroidery Unit-Parents Meeting	07/01/11	20
16	Parent Training program for Adult persons with Multiple Disabilities	01/02/11-02/02/11	62
17	Tailoring & Embroidery Unit -Parents Meeting	07/02/11	14
18	Income Generation Program for parents at NIEPMD	Feb 11	12
19	Tailoring & Embroidery Unit – Parents meeting	02/03/11	14
20	Parent training program on Multiple Disabilities, Nagercoil	05/03/11	60
21	Importance of Adult Independent Living skills for students of PG diploma in Special Education (MD) at Vidyasagar, Chennai	19/03/11	13
22	Income Generation Program for parents at NIEPMD	March 11	15
	Total		604

a. List of Faculty Members/officials participated in Workshop/Conferences & Seminars

S. No	Faculty/Official's Name	Title of the Program	Organiser	Place
01	Shri.P.Kamaraj	International Seminar on Assistive Technology a key to inclusion	Spastic Society of Karnataka	Bangalore
02	Smt.I G Anusuya	Enhancing Skills to teach Braille	NIEPMD	Chennai
03	Shri.S Gurumoorthy	Enhancing Skills to teach Braille	NIEPMD	Chennai
04	Shri.S.Karthikeyan	Enhancing Skills to teach Braille	NIEPMD	Chennai
05	Shri.S.Karthikeyan	Enhancing Skills to teach Braille	NIEPMD	Chennai
06	Shri.M.Rajesh	Trends in Technologies for Information storage Management for Libraries	Jayam College of Engineering & Technology, Dharmapuri	Dharmapuri
07	Shri. B.S.Santhosh Kanna	National Seminar on Multi Disciplinary Approach to Management of Pediatrics Disabilities	Sri Ramakrishna Mission Vidhyalaya University	Coimbatore
08	Sri. S.Gurumoorthy	National Seminar on Multi Disciplinary Approach to Management of Pediatrics Disabilities	Sri Ramakrishna Mission Vidhyalaya University	Coimbatore
09	Shri.A.Amarnath	Curriculum Development for Volunteers	Rajiv Gandhi Institute for Youth Development	Sriperumpudhur, Kancheepuram
10	Smt.B.Leelavathi	Different Approaches to communication modes for children with disabilities	Clarke School for the Deaf	Chennai
11	Smt.I G Anusuya	Different Approaches to communication modes for children with disabilities	Clarke School for the Deaf	Chennai

12	Sri.P.Kamaraj	Course Coordinator Meet	RCI	New Delhi
13	Smt.B.Leelavathi	Course Coordinator Meet	RCI	New Delhi
14	Sri.B.S.Santhosh Kanna	Course Coordinator Meet	RCI	New Delhi
15	Sri.S.Karthikeyan	Course Coordinator Meet	RCI	New Delhi
16	Smt. I.G.Anusuya	National Level Workshop on Inclusive Education	SSA - MHRD	New Delhi
17	Shri.Rajesh Ramachandran	Hopes & Scopes for Muscular Dystrophy	GIRM, K.K.Nagar	Chennai.
18	Shri.P.Kamaraj	All India Course Coordinators meet	Avinasilingam Deemed University, Coimbatore	Coimbatore
19	Dr.Neeradha Chandramohan	48 th Annual Conference on All Indian Occupational Therapy Association	TNAIOTA	Chennai
20	Dr.Tomy, M K	48 th Annual Conference on All Indian Occupational Therapy Association	TNAIOTA	Chennai
21	Dr.J.Vijayalakshmi	Neurology update academic meet	Neurology Association	Chennai
22	Shri.B.S.Santhosh Kanna	49 th Annual National Physiotherapy Conference	Indian Association of Physiotherapists	Pune
23	Shri.B.S.Santhosh Kanna	2 nd National Conference on Deafblindness	Sense International & NIEPMD	New Delhi
24	Smt.B.Leelavathi	2 nd National Conference on Deafblindness	Sense International & NIEPMD	New Delhi
25	Shri.Stalin Arul Regan	2 nd National Conference on Deafblindness	Sense International & NIEPMD	New Delhi
26	Smt.B.Leelavathi	Workshop on Sex Education for Persons with Deafblindness	Sense International	New Delhi
27	Shri.K.Dhanavendann	2 nd National Conference on Deafblindness	Sense International & NIEPMD	New Delhi

28	Smt.Sobhiya Vani	48 th Annual Conference on All Indian Occupational Therapist Association	TNAIOTA	Chennai.
29	Dr.Neeradha Chandramohan	Result Framework Document (RFD) Workshop	Cabinet Secretary	New Delhi
30	Shri.G.D.Bishnoi	Result Framework Document (RFD) Workshop	Cabinet Secretary	New Delhi
31	Dr.Tomy, M.K	Workshop on Botox injections for Spasticity	IAPMR conference	New Delhi.
32	Dr.Tomy, M.K	IAPMR CON 2011	IARM (Delhi chapter of IAPMR)	New Delhi.
33	Dr.J.Vijayalakshmy	Speech & Speech Related Disorder	Calicut Medical College	Calicut
34	Smt.B.Leelavathi	Literacy development of Children with Deafblindness/ multi sensory impairment	Sense International (India)	Mumbai
35	Mr.A.Amarnath Mr.P.Kamaraj Dr.K.Balabaskar Mr.Rajesh Ramachandran	State consultation meet on Working Draft for New Legislations for Right of Persons with Disabilities Act 2011	SPASTN & NIEPMD	Chennai
36	Mr.A.Amarnath	Social work education, challenges and prospects	Hindustan college	Chennai
37	Smt.B.Leelavathi	Workshop on Vision Rehabilitation	Frontline Eye Hospital	Chennai

b. Presentation of papers by Faculties:

S.No	Faculty Name	Title of the Program	Topic	Organizer
01	Sri. B.S.Santhosh Kanna	National Seminar on Multi Disciplinary Approach to Management of Pediatrics Disabilities	Effects of Different sitting positions in including pulmonary functions in children with spastic quadriplegic cerebral palsy	Sri Ramakrishna Mission Vidhyalaya University, Coimbatore.
02	Dr.J.Vijayalakshmy	Different Approaches to communication modes for children with disabilities	Choosing communication modes for persons with Deafblindness/ Multiple Disabilities	Clarke School for the Deaf
03	Shri.A. Amarnath	Schemes and programs for Muscular Dystrophy, Hopes & Scopes for MD		GIRM, KK Nagar, Chennai
04	Shri.Rajesh Ramachandran	Sexuality and Mental Retardation, Workshop on AIL for Parents		Navjyothi Trust, Ambathur Chennai.
05	Smt.B.Leelavathi	National Seminar on Emerging Issues on Education of Blind with Mentally Handicapped	Emerging issues on Education of Persons with Mentally Handicapped	RKM, Kolkata.
06	Shri.B.S.Santhosh Kanna	49 th Annual National Physiotherapy Conference	A study on different sitting position in children with Spastic Quadriplegic Cerebral Palsy	Pune

07	Shri.B.S.Santhosh Kanna	2 nd National Conference on Deafblindness	Role of Pilateon positive and proprioception in client with Deafblindness	New Delhi.
08	Shri.Stalin Arul Regan	2 nd National Conference on Deafblindness	Poster presentation Recreational activities for Deafblind	New Delhi.
09	Shri.K.Dhanavendan	2 nd National Conference on Deafblindness	Poster presentation on Feeding positioning for Children with Deafblindness and Multiple Disabilities	New Delhi.
10	Dr.Tomy, M.K	Inborn errors of Metabolism giving rise to Multiple Disabilities	Souvenir of IAPMR conference	
11	Dr.J.Vijayalakshmy	Hearing Impaired Child	CME manual	Calicut Medical College
12	Dr.K.Balabaskar	Mental Health Status of Teachers working in Special Schools for Children with Special needs	Journal of Disability Management & Special Education	
13	Dr.J.Vijayalakshmy Smt.B.Leelavathi Sri.Stalin Arul Regan	Significance of Outdoor Activities in Educating Persons with Deafblindness	Journal of Disability Management & Special Education	
14	Sri.A.Amarnath	Social work education, challenges and prospects, Hindustan college	Field work in social work education with special reference to CBR	Hindustan College of Arts & Science, Chennai

ANNEXURE 7

The Committee for Monitoring of the construction of new complex at NIEPMD

F.No. 8-1/2009-NIs
Government of India
Ministry of Social Justice & Empowerment

Shastri Bhawan, New Delhi
Dated: March, 2009
8-4-2009

ORDER

Sub: Construction of new complex at National Institute for Empowerment of Persons with Multiple Disabilities, Chennai.

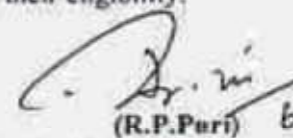
The undersigned is directed to convey the approval of competent authority for constituting a Central Committee for monitoring of the construction of new complex at NIEPMD, Chennai. The Committee will comprise the following:

- | | | |
|--|---|-------------------|
| 1. Secretary, Ministry of Social Justice & Empowerment | - | Chairperson |
| 2. Joint Secretary (DD), Ministry of Social Justice & Empowerment | - | Member |
| 3. Financial Adviser, Ministry of Social Justice & Empowerment | - | Member |
| 4. 3 nominees of Director, IIT, Chennai, to represent Deptt. of Civil Engg. Engg. Design, & Computer Science and Engg. | - | Member |
| 5. One nominee of Director, School of Planning and Architecture, New Delhi. | - | Member |
| 6. Principal Secretary, Disability Welfare Deptt., Govt. of Tamil Nadu. | - | Member |
| 7. Shri Sanjeev Sachdeva, Disability Specialist, | - | Member |
| 8. Dr. D. Nagaraja, Director, NIMHANS, Bangalore. | - | Member |
| 9. Nominees of CPWD, Tamil Nadu | - | Member |
| (i) Chief Engineer | - | Member |
| (ii) Senior most Architect, CPWD, Office, Chennai. | - | Member |
| 10. Director, National Institute for the Empowerment of Persons with Multiple Disabilities, Chennai. | - | Member- Secretary |

-2-

2. The terms and conditions for the committee are follows:

- Ensure that the building is designed and constructs in a state-of-the-art manner, fully meeting all requirements of the clientele.
- The building is eco-friendly, energy efficient, and aesthetic.
- The building construction is of high quality.
- There is no or minimal time cost overruns.
- The new NIEPMD campus is so designed and constructed that it requires minimum repairs.
- The application of solar energy would be made to the extent possible.
- The committee would meet once in two months at NIEPMD, Chennai.
- For Non-official members TA/ DA will be borne by NIEPMD as per their eligibility.


(R.P.Puri) b'

Copy to information and necessary action:

- The Director, Indian Institute of Technology, Madras IIT, Post Office Chennai 600 036; with request to nominate experts to represent Deptt. of Civil Engg. Engg. Design & Computer Science & Engg.
- Director, School of Planning and Architecture, 4, Block-B, Indraprastha Estate, New Delhi - 110002; with request to nominate one expert for the above committee. 011-2370.
- Principal Secretary, Disability Welfare Department, Govt. of Tamil Nadu.
- Shri Sanjeev Sachdeva, Deputy Director, Lok Sabha Secretariat G-086-J Block, Ground Floor Parliament Library Building New Delhi
- Dr. D. Nagaraja, Director National Institute of Mental Health and Neuro Sciences (NIMHANS), Hosur Road, Bangalore-560029.
- Central Public Works Deptt., Rajaji Bhavan, Basant, Chennai with request to nominate Chief Engineer, CPWD, Chennai and Sr. Most Architect, CPWD, Chennai.
- Director, National Institute for the Empowerment of Persons with Multiple Disabilities, Chennai.

Copy to:

PS to Minister (SJ&E)/PS to MOS (SJ&E)/PS to Secretary (SJ&E)/PS to AS (SJ&E)/PS to JS(DD).



ANNEXURE 8

Office Memorandum of Minutes of Expenditure Finance Committee Meeting

No.8-2/2006-NEI
Government of India
Ministry of Social Justice & Empowerment

Shastri Bhawan, New Delhi
Dated 27th June, 2008

OFFICE MEMORANDUM

Sub: Minutes of Expenditure Finance Committee (EFC) meeting under the Chairmanship of Secretary (SJ&E) to consider Memorandum on the construction of building for National Institute for Empowerment of Persons with Multiple Disabilities (NIEPMD), Chennai.

The undersigned is directed to refer to this Ministry's O.M. No. dated 20.4.2008 on the above subject and to enclose copy of the Minutes of the EFC meeting held on 28.4.2008 under the Chairmanship of Secretary (SJ&E) to consider Memorandum on the construction of building for National Institute for Empowerment of Persons with Multiple Disabilities (NIEPMD), Chennai for necessary action.

[Signature]
(R.P. Puri)

Under Secretary to the Govt. of India

To:

1. Dr. Nagesh Singh, Advisor (PAMD), Planning Commission, Yojna Bhawan, New Delhi.
2. Shri G.B. Panda, Advisor (SJ), Planning Commission, Yojna Bhawan, New Delhi.
3. Shri B.S. Bhullar, Joint Secretary (PF-II), Ministry of Finance, Deptt. of Expenditure Plan Finance-II Division, North Block, New Delhi.
4. Shri Sunil Kumar, Joint Secretary, Deptt. of Higher Education, Ministry of Human Resource Development Shastri Bhawan, New Delhi.
5. Shri Sanjiv Mittal, Joint Secretary & FA (SJ&E), Ministry of Social Justice & Empowerment, Shastri Bhawan, New Delhi.
6. Ms. Reema Prakash, Director (PF-II), Ministry of Finance, North Block, New Delhi.
7. Dr. Neerajia Chandermohan, Director, NIEPMD, Chennai.
8. Shri Abhai Sinha, Director, (PM), CPWD, Nirman Bhawan, New Delhi.

Copy to:

- (i) PS to Secretary (SJ&E)
- (ii) PS to AS (SJ&E)
- (iii) PA to DDG (SJ&E)

[Handwritten signatures and dates]
09/07/08

ANNEXURE 9

Constitution of Monitoring Committee for the purpose of implementation of Disability related schemes of the Ministry of Social Justice & Empowerment

No. 4-2(39)/09-DD-I
Government of India
Ministry of Social Justice & Empowerment

ORDER

Dated: 29.09.2009

Sub: Allocation of States/Union Territories to National Institutes, their Regional Centre (RC) and Composite Regional Centre (CRC) for inspection, monitoring and guidance to Grantee Organisations under the Disability related Schemes of the Ministry (especially ADIP, DDRS & DDRCs).

At present, the grantee organisations of the Disability Schemes of this Ministry are inspected mainly by the State Govts. and to some extent by officers of Ministry and its National Institutes.

2. In the interest of regular monitoring and inspections of the grantee organisations under the above Schemes and to provide them necessary guidance, it has been decided to allocate various States/UTs to the National Institutes, their Regional Centres and CRCs, as follows:

S. No.	National Institute	Local RCs of other NIs which will assist the NI in column (2)	CRCs and other RCs	States/UTs allocated
(1)	(2)	(3)	(4)	(5)
1.	IPH, New Delhi	Delhi-based RCs of NIMH & NIHH	1. CRC, Srinagar 2. CRC, Lucknow	Delhi, Rajasthan, Punjab, Haryana and Chandigarh J&K Uttar Pradesh
2.	NIVH, Dehradun	Dehradun-based RC of NIOH	CRC, Sundernagar	Uttarakhand Himachal Pradesh

3.	NIOH, Kolkata	Kolkata-based RCs of NIVH, NIMH & NIHH		West Bengal
			CRC, Patna	Bihar
			RC, Aizawl	Mizoram, Nagaland, Manipur, Sikkim and Tripura
4.	NIRTAR, Cuttack			Orissa and Jharkhand
			CRC, Guwahati	Assam, Meghalaya and Arunachal Pradesh
5.	NIMH, Secunderabad	RCs of NIHH, NIVH and IPH at Secunderabad		Andhra Pradesh and Karnataka
6.	NIEPMD, Chennai	RC of NIVH at Chennai		Tamil Nadu, Kerala, Puducherry, A&N Islands and Lakshadweep
7.	NIHH, Mumbai	Mumbai-based RC of NIMH		Mizoram, Gujarat, Goa, Daman & Diu and Dadra & Nagar Haveli
			CRC, Bhopal	Madhya Pradesh and Chhattisgarh

Local RCs of NIs as mentioned in Col. 3 of the above table will assist the NI mentioned in Col. 2 in carrying out functions specified in para 2 and will, for this purpose, work under the guidance of the Director of the NI mentioned in Col. 2.

3. The National Institutes, their RCs and CRCs mentioned in Columns 2 and 3 of the above table will, inter-alia, perform the following functions in respect of the States/UTs shown against their names:-